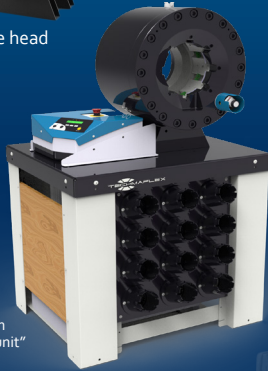


# S CRIMP 450-200/P

XXL WORKSHOP



Version with remote head



Production version with "silent" central unit

## KEY FEATURES

- High crimp force (450 tonnes)
- Large opening
- Wide family of dies for industrial hoses
- Long master dies
- Robust & Ergonomic
- Metallic guard for the set stop
- Separated crimping head allowing flexible workshop arrangements

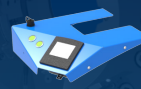
### Production option:

- "silent" central unit with 50 L tank
- Table with racks EVO
- 3 control panels available

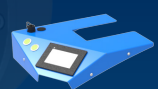
## CONTROL OPTIONS AVAILABLE ON REQUEST



SC



SCE



SCS

## TECHNICAL SPECIFICATIONS

<b>CAPACITY*</b>	<b>MOTOR</b>
Industrial: 4" & 6"	5.5 kW
<b>CRIMP RANGE</b>	<b>VOLTAGES</b>
4 - 180 mm (0.157 - 7.087")	220/240 V, 3Ph, 50 Hz
<b>CRIMP FORCE</b>	380/415 V, 3Ph, 50 Hz
450 t	208/240 V, 3Ph, 60 Hz
<b>OPENING WITH DIES</b>	380/415 V, 3Ph, 60 Hz
+70 mm (+2.755")	<b>DIMENSIONS</b>
<b>MASTER-DIES OPENING**</b>	830 x 775 x 1450 mm
270 mm (10.629")	(33 x 31 x 57")
<b>MASTER DIE LENGTH</b>	<b>PACKAGING</b>
125 mm (4.921")	1120 x 1020 x 1770 mm
<b>STANDARD DIES</b>	(44 x 40 x 70")
15, 18, 21, 24, 27, 30, 33, 36, 39, 42, 45, 48, 51, 57, 62, 66, 70, 73, 76; Dies up to 180 mm available on request	<b>NET WEIGHT</b>
	450 kg (992 lb)
	750 kg (pro version)

\*Indicative capacities depending on hose and fitting type

\*\* Full passage 230 mm

## OPTIONAL



Die Storage Panel



Die Storage Table EVO



Quick Change Gun



Aluminium Quick Change Gun



Electrical Footswitch



Marking Dies



Die Sets for Brake & Air Conditioning Hoses



Digital Caliper