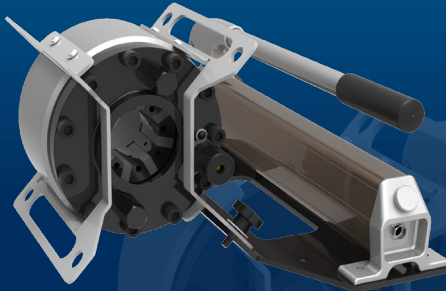


H CRIMP 110

FIELD SERVICE & MOBILE WORKSHOP
HAND PUMP, PORTABLE

KEY FEATURES

- Flexible
- Portable
- Robust (protected narrow head)
- Multi-positioning (with removable plate)



TECHNICAL SPECIFICATIONS

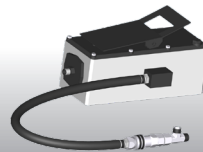
CAPACITY*	STANDARD DIES
2wb: 1" max.	15, 18, 21, 24, 27, 30
4ws: 1" max.	DIMENSIONS
CRIMP RANGE	540 x 400 x 225 mm (21 x 16 x 9")
6 - 43 mm (0.236 - 1.693")	PACKAGING
CRIMP FORCE	800 x 600 x 830 mm
110 t	(31 x 24 x 33")
OPENING WITH DIES	NET WEIGHT
+20 mm (+0.787")	28 kg (62 lb)
COMPLETE OPENING	WEIGHT (HEAD ONLY)
59 mm (2.323")	21 kg (46 lbs)
MASTER DIE LENGTH	
60 mm (2.362")	

*Indicative capacities depending on hose and fitting type
** Master-dies used as dies set N°39

OPTIONAL



Maintenance Kits



Hydro-pneumatic Pump