

XL CRIMP 400

PE 280
XXL WORKSHOP



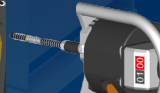
KEY FEATURES

- High crimping force
- Ergonomic operation
- Economic solution
- Large opening
- Robust
- Easy set up
- Versatile
- Adjustable crimping working position

STANDARD



Remote Control



Ergonomic Micrometer

TECHNICAL SPECIFICATIONS

CAPACITY*	MOTOR
Industrial: 6"	5.5 kW
CRIMP RANGE	VOLTAGES
4 - 210 mm (0.157 - 8.268")	230 V, 3 Ph
CRIMP FORCE	400 V, 3 Ph
400 t	DIMENSIONS
OPENING WITH DIES	1100 x 900 x 1550 mm
+50 mm (+1.969")	(43 x 35 x 61")
COMPLETE OPENING	WEIGHT
285 mm (11.221")	750 kg (165 lbs)
MASTER DIE LENGTH	TECHNICAL FEATURES
150 mm (5.906")	-Die sizes available upon request

OPTIONAL



Aluminium Quick Change Gun

*Indicative capacities depending on hose and fitting type