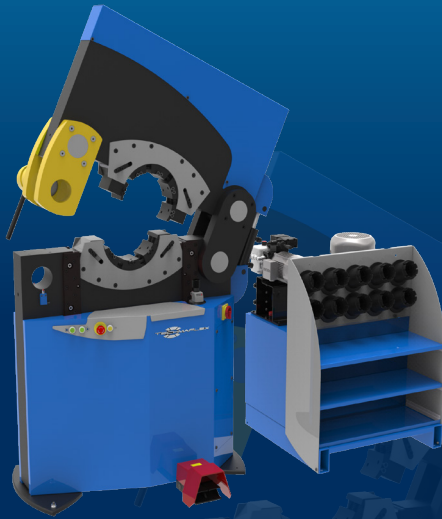


XL CRIMP 320

PESO 320
XXL WORKSHOP

KEY FEATURES

- Unique on market
- Lateral opening
- No limit on end connection diameter
- Easy to use
- Separated power pack
- Integrated safety system



STANDARD



Electrical Footswitch



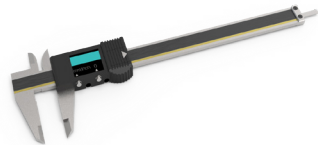
Die Storage

TECHNICAL SPECIFICATIONS

CAPACITY*	VOLTAGES
Industrial: 6"	230 V, 3 Ph
CRIMP RANGE	400 V, 3 Ph
4 - 230 mm (0.157 - 9.055")	MACHINE DIMENSIONS
CRIMP FORCE	1265 x 680 x 1800 mm
320 t	(50 x 27 x 71")
OPENING WITH DIES	POWER PACK DIMENSIONS
+55 mm (+2.165")	890 x 800 x 1050 mm
COMPLETE OPENING	(35 x 31 x 41")
260 mm (10.236")	MACHINE WEIGHT
LATERAL OPENING	1700 kg (3748 lb)
247 mm (9.724")	POWER PACK WEIGHT
MASTER DIE LENGTH	400 kg (882 lb)
125 mm (4.921")	TECHNICAL FEATURES
MOTOR	-Die sizes available upon request
5.5 kW	

*Indicative capacities depending on hose and fitting type

OPTIONAL



Digital Caliper