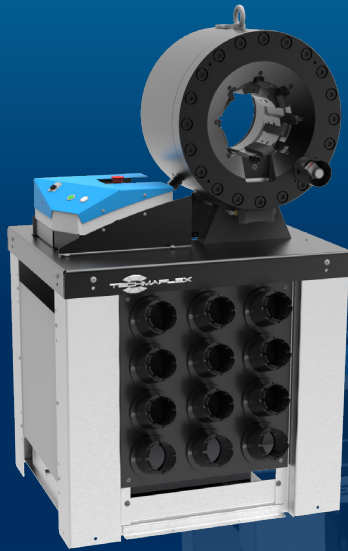


# S CRIMP 450

## ASSEMBLING FOR FIELD REPAIR BENCHTOP CRIMP MACHINE



### KEY FEATURES

- High crimp force
- Large opening
- Wide family of dies for industrial hoses
- Long master dies
- Robust - designed for harsh environments
- Low noise level
- Easy die set-up with ergonomic gun
- Metallic guard for the set stop

### STANDARD



Electrical Footswitch



Aluminium Quick Change Gun

### TECHNICAL SPECIFICATIONS

<b>CAPACITY*</b>	<b>NOISE LEVEL</b>
6ws: 3" max.	<65 dB A
Industrial: 6" max.	<b>MOTOR</b>
<b>CRIMP RANGE</b>	5.5 kW
4 - 180 mm (0.157 - 7.087")	<b>VOLTAGES</b>
<b>CRIMP FORCE</b>	220/240 V, 3Ph, 50 Hz
450 t	380/415 V, 3Ph, 50 Hz
<b>OPENING WITH DIES</b>	208/240 V, 3Ph, 60 Hz
+70 mm (+2.755")	380/415 V, 3Ph, 60 Hz
<b>COMPLETE OPENING</b>	<b>DIMENSIONS</b>
230 mm (9.055")	830 x 775 x 1450 mm
<b>MASTER DIE LENGTH</b>	(33 x 31 x 57")
125 mm (4.921")	<b>PACKAGING</b>
<b>STANDARD DIES</b>	1120 x 1020 x 1770 mm
16, 18, 20, 22, 24, 27, 30, 33, 36, 39, 42, 45, 48, 51, 57, 63, 66, 70, 73, 76	(44 x 40 x 70")
	<b>NET WEIGHT</b>
	720 kg (1587 lb)

\*Indicative capacities depending on hose and fitting type

### OPTIONAL



Marking Dies



Die Sets for Brake & Air Conditioning Hoses