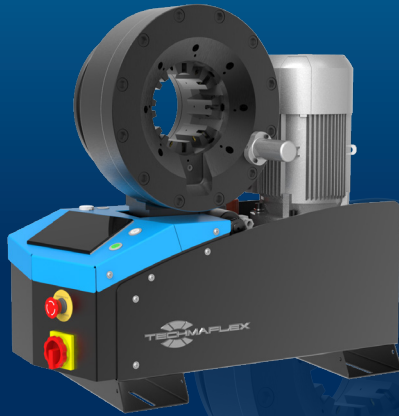


S CRIMP 350 EVO / S CRIMP 350 L

FULL SERVICE WORKSHOP
BENCHTOP; VERY HIGH CRIMP FORCE



KEY FEATURES

- Crimp force up to 350 tonnes for hoses up to 3"
- Easy to use and robust
- Automatic maintenance alerts
- Groove for 90° long drop fittings
- Also available as S CRIMP 350 L with 4.0 kW motor
- Model shown equipped with SCS control panel

CONTROL OPTIONS AVAILABLE ON REQUEST



TECHNICAL SPECIFICATIONS

CAPACITY*	NOISE LEVEL
2wb: 3" max.	<70 dB A
Industrial: 4" max.	MOTOR
4ws: 2" max.	5.5 kW / 4 kW
6ws: 2" max.	VOLTAGES
CRIMP RANGE	220/240 V, 3Ph, 50 Hz
4 - 130 mm (0.157 - 5.118")	380/415 V, 3Ph, 50 Hz
CRIMP FORCE	208/240 V, 3Ph, 60 Hz
350 t	380/415 V, 3Ph, 60 Hz
OPENING WITH DIES	DIMENSIONS
+54 mm (+2.125")	765 x 400 x 750 mm
COMPLETE OPENING	(30 x 16 x 30")
180 mm (7.086")	NET WEIGHT
MASTER DIE LENGTH	262 kg (578 lb)
115 mm (4.523")	TECHNICAL FEATURES
STANDARD DIES	-Automatic maintenance alerts
14, 16, 18, 20, 22, 24, 27, 30, 33, 36, 39, 42, 45, 48, 51, 57, 63, 66, 70, 73, 76	-Cylinder protection against dust - durable design
	-Also available as S CRIMP 350 EVO L with 4.0 kW Motor

*Indicative capacities depending on hose and fitting type

OPTIONAL

