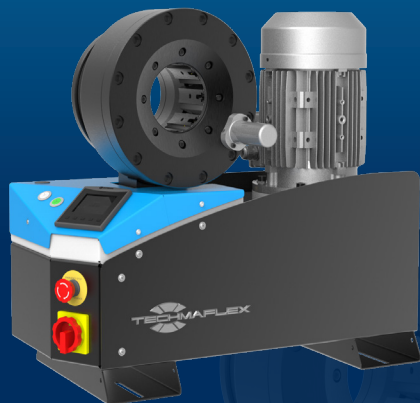


# S CRIMP 240 EVO

PROFESSIONAL WORKSHOP  
BENCHTOP



## KEY FEATURES

- Crimp force of up to 240 tonnes for hoses up to 2"
- Easy to use and robust
- Radial die movement
- High crimping force
- Extensive range of dies to suit crimping of hydraulic hoses
- Easy set up and maintenance
- Fast and reliable
- Model shown equipped with SCE control panel

## CONTROL OPTIONS AVAILABLE ON REQUEST



SC

SCE

SCS

## TECHNICAL SPECIFICATIONS

<b>CAPACITY*</b>	<b>NOISE LEVEL</b>
2wb: 2" max.	<70 dB A
4ws: 2" max.	<b>MOTOR</b>
6ws: 1 1/2" max.	4.0 kW
<b>CRIMP RANGE</b>	<b>VOLTAGES</b>
4 - 76 mm (0.157 - 2.992")	220/240 V, 1Ph, 50/60 Hz
<b>CRIMP FORCE</b>	220/240 V, 3Ph, 50 Hz
240 t	380/415 V, 3Ph, 50 Hz
<b>OPENING WITH DIES</b>	208/240 V, 3Ph, 60 Hz
+38 mm (+1.496")	Other voltages available on request
<b>COMPLETE OPENING</b>	<b>DIMENSIONS</b>
118 mm (4.645")	765 x 400 x 650 mm
<b>MASTER DIE LENGTH</b>	(30 x 16 x 26")
100 mm (3.937")	<b>NET WEIGHT</b>
<b>STANDARD DIES</b>	165 kg (364 lb)
14, 16, 18, 20, 22, 24, 27, 30, 33, 36, 39, 42, 45, 48, 51, 57, 63, 66, 70	

\*Indicative capacities depending on hose and fitting type

## OPTIONAL

- Maintenance Kit
- Electrical Footswitch
- Die Storage Panel
- Die Storage Table
- Die Storage Table EVO
- Quick Change Gun
- Aluminium Quick Change Gun
- Mechanical Backstop
- Die Sets for Brake & Air Conditioning Hoses
- Marking Dies
- Digital caliper
- Die Storage Panel EVO