

# P SKIVE 300

## STARTER & PROFESSIONAL WORKSHOP STAND TYPE SKIVING MACHINE



### KEY FEATURES

- Plug'n skive system
- Large dust collector
- Robust & easily adjustable knife for quick and easy changeover
- Suitable for high volume production
- 2-way rotation
- Speed regulator for single-phase version

### TECHNICAL SPECIFICATIONS

**CAPACITY**

- 2wb: 2" max.
- 4ws: 2" max.
- 6ws: 3" max. \*

**ROTATION SPEED**

300 rpm

**MOTOR**

0.9 kW

**VOLTAGES**

- 220/240 V, 3Ph, 50 Hz
- 380/415 V, 3Ph, 50 Hz
- 208/240 V, 3Ph, 60 Hz
- 380/415 V, 3Ph, 60 Hz

**DIMENSIONS**

675 x 550 x 1130 mm  
(27 x 22 x 44")

\*with clamping system

**PACKAGING**

800 x 600 x 1200 mm  
(32 x 24 x 47")

**NET WEIGHT**

100 kg (220 lb)

**GROSS WEIGHT**

160 kg (353 lb)

**TECHNICAL FEATURES**

Options available:  
hose clamping system  
(recommended for hoses  
from 2")

Tools available (to be  
ordered separately):  
ESA, IS, ESP1, ESP2

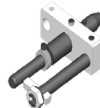
### OPTIONAL



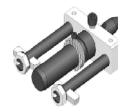
Tool Kit IS



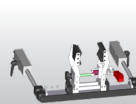
Tool kit ESA



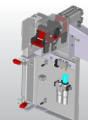
Tool Kit ESP 1



Tool Kit ESP 2



Manual Hose Clamping System



Pneumatic Hose Clamping System



Speed Regulator