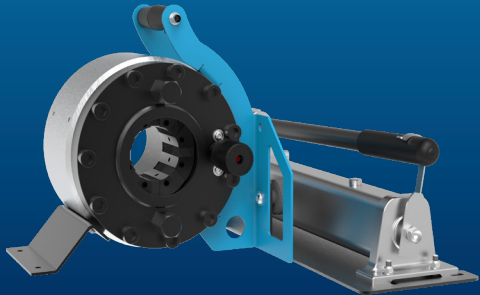


# H CRIMP 110 EVO

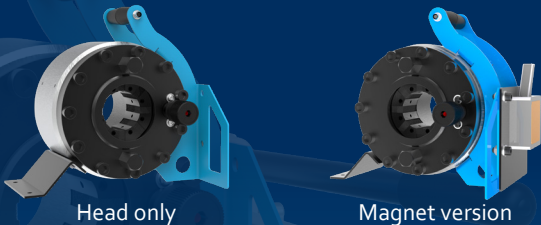
FIELD SERVICE & MOBILE WORKSHOP  
HAND PUMP, PORTABLE



## KEY FEATURES

- Flexible
- Portable
- Robust (protected narrow head)
- Multi-positioning (with removable plate)

## OTHER VERSIONS AVAILABLE



Head only

Magnet version

## TECHNICAL SPECIFICATIONS

### CAPACITY\*

2wb: 1" max.

4ws: 1" max.

### CRIMP RANGE

6 - 43 mm (0.236 - 1.693")

### CRIMP FORCE

110 t

### OPENING WITH DIES

+20 mm (+0.787")

### COMPLETE OPENING

59 mm (2.323")

### MASTER DIE LENGTH

60 mm (2.362")

### STANDARD DIES

16, 18, 20, 22, 24, 27, 30,

### DIMENSIONS

289 x 237 x 270 mm

(11 x 9 x 10")

### PACKAGING

800 x 600 x 830 mm

(31 x 24 x 33")

### NET WEIGHT

29 kg (63 lb)

Magnet version: 30kg (66 lb)

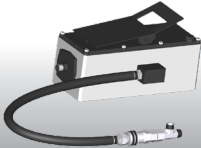
### WEIGHT (HEAD ONLY)

21 kg (46 lbs)

## OPTIONAL



Maintenance Kits



Hydro-pneumatic Pump

\* Indicative capacities depending on hose and fitting type

\*\* Master-dies used as dies set N°39