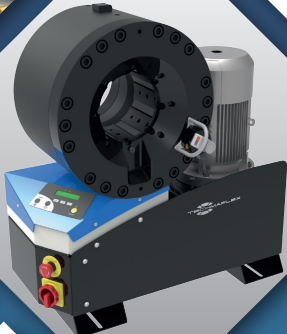


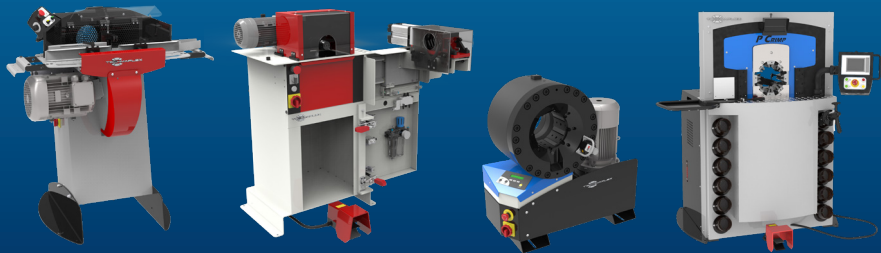
QUALITY

INDUSTRIAL
HYDRAULIC
RELIABILITY

INTEGRATED SOLUTIONS

ASSEMBLY MACHINES





INTRODUCTION

From being founded in 1987, Techmaflex has become known for the quality and reliability of its benchtop equipment and crimping solutions. Today, Techmaflex is a leader in Europe on benchtop crimping and its supporting equipment range. Techmaflex has grown globally with an established equipment range for portable equipment, benchtop equipment, OEM level and Industrial hose applications. Techmaflex has worked closely with a hose and fitting manufacturer to ensure the equipment meets the toughest demands of the hose industry. This alliance has allowed Techmaflex to design machines perfectly suited for hose assemblers in all industries.

Now established with offices in North America, Asia, Russia, and manufacturing in Europe, Techmaflex has established a global network to support our customers with prompt service and support for all equipment.

Techmaflex continues to innovate in order to serve the expanding market with reliable, hard working equipment and unbeatable service. When you decide on your next line of equipment, look for the "Original Techmaflex" Stamp to ensure you have the best so you can make the best.

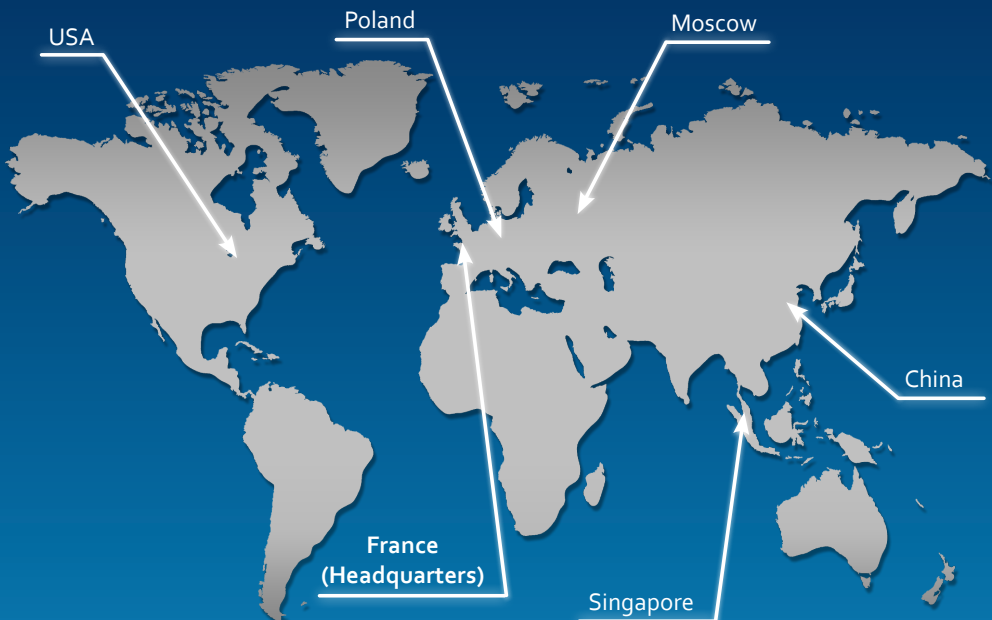
All of Techmaflex's assembly machines undergo a rigorous product development process and are subject to extensive testing in both laboratory and field environments.

The following index offers a guideline to aid selection of the proper machine with reference to the applications and performance requested.

Special machines (not included in this catalogue) are available upon request, as well as original spare parts.

CONTENTS

| | |
|------------------------------|----|
| Cutting Machines..... | 2 |
| Skiving Machines..... | 11 |
| Insert Pushing Machines..... | 16 |
| Marking Machines..... | 18 |
| Complementary Products..... | 19 |
| Crimping Machines..... | 21 |
| Test Benches..... | 48 |
| Industrial Machines..... | 50 |



FIELD SERVICE & MOBILE WORKSHOP 12V/24V

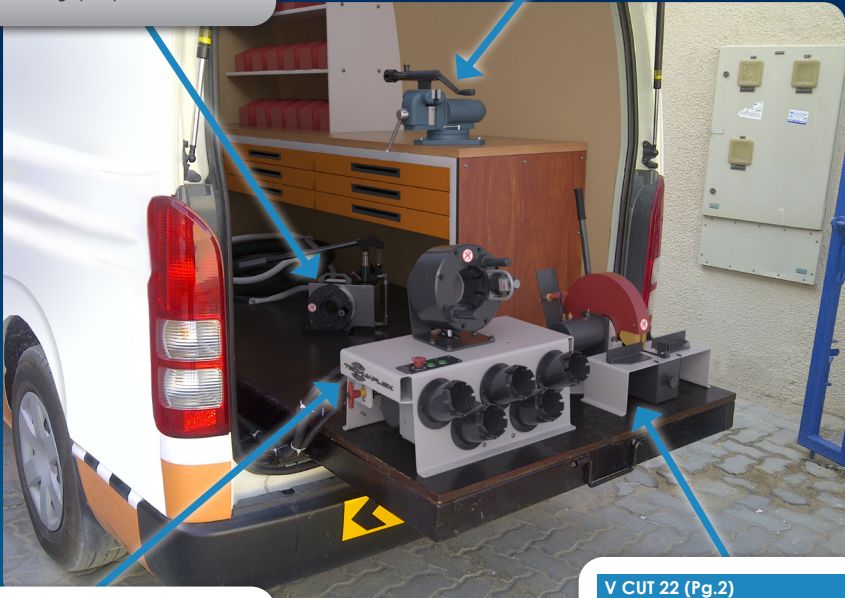
A compact and robust line up to 2", perfect for on-site repair. The hand crimper, H CRIMP 80 EVO, offers accessibility to all sites. A complete 12V line delivers hose assembly quality equal to the one obtained in a workshop.

H CRIMP 80 EVO (Pg.21)

Capacity: 1" 2 WB
Compact
Lightweight
Easy to use
Balanced design
Dual stage pump

H SKIVE (Pg.11)

Capacity: 2"
Economic
Simple
Compact
Robust
Plug'n skive system



V CRIMP 137 (Pg.30)

Capacity: 1 3/4" 4WS
Robust and compact design
Lightweight
High crimping speed
Suitable also for 90° elbow fittings
Cylinder protection
Remote head mounting option possible

V CUT 22 (Pg.2)

Capacity: 1 3/4" 4WS
Smooth bending system
90° cut
Clean cut
Scalloped blade
Dust collector included
Multiple voltage options

EXPERT SERVICE LINE

A result of our collaboration with OEM assemblers and hose manufacturers, our expert workshop combines power, reliability, speed, openness and comfort. Techmaflex is now the most innovative manufacturer in machines dedicated to OEM, providing (for instance) the Safe Crimp System which guarantees a constant control of hose assemblies.

P CUT 90 (Pg.9)

Capacity: 3" 6WS
Very powerful
Heavy duty for difficult cuts
Hydraulic bending
Brake motor
Electronic soft start

P SKIVE 300 (Pg.13)

Capacity: 3" 6WS
Plug'n skive system
Large dust collector
Robust & easily adjustable knife for quick and easy changeover
Suitable for high volume production
2-way rotation



S PUSH 1500 (Pg.16)

Capacity: all hydraulic hoses from 3/4" up to 2" Interlock
Compact
Sturdy
Powerful
Hydro pneumatic power pack

P CRIMP 480 (Pg.39)

Capacity: 3" 6WS
High crimp force
Large opening
Safe Crimp System (SCS) control
Wide family of dies for industrial hoses
Long master dies
Robust
Low noise level
Easy die set-up with ergonomic gun

XXL WORKSHOP

A workshop developed on a complete range of Industrial crimpers combining power, openness, ergonomics and solutions for handling large diameters. This workshop increases your potential of opportunities. It allows you to prospect many and various markets and thus amortize your investment quickly. Our knowledge of the activity constraints led us to offer ergonomic solutions adapted to the handling of large diameters.



XL CRIMP 800 (Pg.40)

- Capacity: 4" 4WS / 3" 6WS / 8" Industrial
- Designed for heavy duty large bore hydraulic hoses
- High power and speed
- Ergonomically designed for large bore hoses
- Safe Crimp System (SCS) for maximum reliability during the crimping process
- Large opening up to 8"
- Long master dies
- Very high crimping force

CRIMPING MACHINES EVO RANGE

PG. 25-28

Techmaflex is always on the lookout for ways to improve both the efficiency and the quality of new and existing production operations.

As a market leader in assembly machines, we wanted to offer new crimping machines to improve the operator's comfort, giving more flexibility when assembling hoses. This led to the creation of the new EVO crimping machines.

These machines combine the robustness required for harsh environments with the reliability needed for busy workshops. Their compact and ergonomic design, along with the ease of set up and maintenance, make them suitable for a variety of applications.

This extensive range is highly adaptable, with various options available allowing users to customise their machine according to their specific needs.



- Extensive range for both industrial and hydraulic hoses.

- 137, 240, 350 and 420 tonnes variants
- From 3/16 up to 4" hose diameter
- 4 kW or 5,5 kW motor for 3Ph



- SC panel - Smart Control panel.
Daily counter.
Semi-automatic opening.

- SCE panel - electronic micrometer with the ability to save up to 25 configuration
- Caliper connected and numerical display of the crimping range on SCE
- SCS panel - Safe Crimp System



- Compact and ergonomic design
- Easy set up

- Various options available depending on our customers' needs and workshops



- Robust
- Ease of maintenance (foam pads and dust collector)
- Compatibility with all tensions (different frequencies)

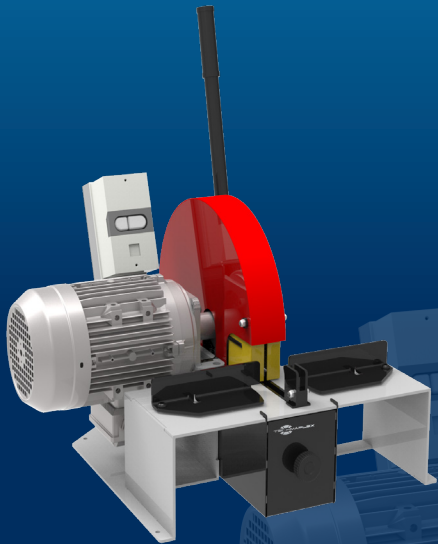
OUR PRODUCTS

S CUT 22 / V CUT 22

STARTER WORKSHOP
BENCHTOP

CUTTING
MACHINES

2



KEY FEATURES

- Smooth bending system
- 90° cut
- Clean cut
- Scalloped blade
- Dust collector included
- Multiple voltage options

STANDARD



Scalloped Blade

Dust Collector

TECHNICAL SPECIFICATIONS

CAPACITY

- 2wb: 1¼" max.
- 4ws: 1¼" max.

ROTATION SPEED

- 3000 rpm

SCALLOPED BLADE DIAMETER

- 254 mm (10") included

MAX HOSE OD.

- 50 mm (1.969")

MOTOR

- 2.2 kW

VOLTAGES

- 220/240 V, 1Ph, 50/60 Hz
- 220/240 V, 3Ph, 50 Hz
- 380/415 V, 3Ph, 50 Hz
- 208/240 V, 3Ph, 60 Hz
- 12/24 V also available upon request

DIMENSIONS

- 630 x 485 x 650 mm
- (25 x 19 x 26 ")

PACKAGING

- 800 x 600 x 830 mm
- (31 x 24 x 33")

NET WEIGHT

- 42 kg (93 lb)

GROSS WEIGHT

- 42 kg (93 lb)

TECHNICAL FEATURES

- Dimensions van type machine:
- 488 x 630 x 650 mm
- (19.2 x 24.8 x 25.6");
- 38 kg (84 lb)

Single-phase S3 25% service factor

OPTIONAL



Battery



Slotted blade



Smoke extractor
*except version 12/24V

S CUT 30 E

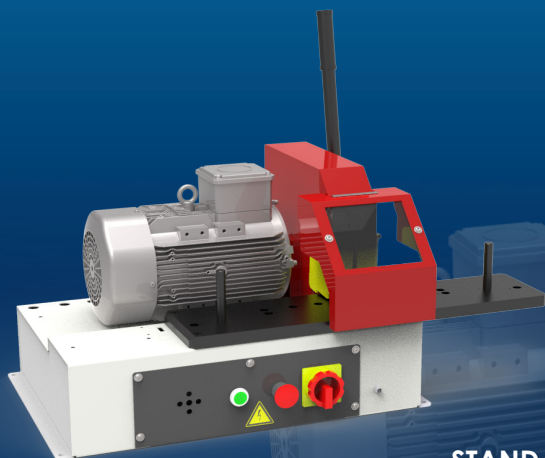
STARTER & PROFESSIONAL WORKSHOP
BENCHTOP CUTTING MACHINE, OPTIONAL SKIVING

KEY FEATURES

Compact design

Easy and safe to use

Versatile, scalloped blade for high performance and efficient cutting with minimal smoke



STANDARD



Scalloped Blade



Dust Collector

TECHNICAL SPECIFICATIONS

CAPACITY

2wb: 2" max.
4ws: 2" max.
6ws: 1¼" max.
Industrial: 2" max.

ROTATION SPEED

3000 rpm

SCALLOPED BLADE DIAMETER

300 mm (11.8")

MAX HOSE OD.

85 mm (3.346")

MOTOR

3.0 kW

VOLTAGES

220/240 V, 1Ph, 50/60 Hz
220/240 V, 3Ph, 50 Hz
380/415 V, 3Ph, 50 Hz
208/240 V, 3Ph, 60 Hz
Other voltages available on request

DIMENSIONS

835 x 545 x 640 mm
(33 x 21 x 25")

PACKAGING

1170 x 770 x 1100 mm
(46 x 30 x 43")

NET WEIGHT

75 kg (165 lb)

GROSS WEIGHT

90 kg (198 lb)

OPTIONAL



Cutting Rail



Smoke extractor

S CUT 30 L

STARTER & PROFESSIONAL WORKSHOP
STAND TYPE CUTTING MACHINE

KEY FEATURES

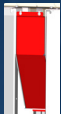
- Compact design
- Easy and safe to use
- Scalloped blade for clean cut
- High performance and efficient cutting with minimal smoke
- Ergonomic, easy to clean
- Integrated dust collector



STANDARD



Smoke Suction
Connector



2 Dust Collectors



Scalloped blade

TECHNICAL SPECIFICATIONS

CAPACITY

2wb: 2" max.
4ws: 2" max.
6ws: 1 3/4" max.
Industrial: 2"

VOLTAGES

220/240 V, 1Ph, 50/60 Hz
220/240 V, 3Ph, 50 Hz
380/415 V, 3Ph, 50 Hz
208/240 V, 3Ph, 60 Hz
Other voltages available
on request

ROTATION SPEED

3000 rpm

DIMENSIONS

765 x 500 x 1150 mm
(30 x 20 x 45")

SCALLOPED BLADE DIAMETER

254 mm (10")

PACKAGING

800 x 600 x 1200 mm
(32 x 24 x 47")

MAX HOSE OD.

85 mm (3.34")

MOTOR

3.0 kW

NET WEIGHT

92 kg (203 lb)

GROSS WEIGHT

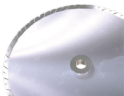
120 kg (265 lb)

Single-phase S3 25% service factor

OPTIONAL



Cutting Rail



Slotted blade



Smoke extractor

S DUO 30

STARTER & PROFESSIONAL WORKSHOP
BENCHTOP, INTEGRATED CUTTING & SKIVING



KEY FEATURES

Compact design

Two operations in one machine

Easy and safe to use

Versatile, scalloped blade for high performance and efficient cutting with minimal smoke

Dust free skive operation (drawers for dust collection)

Electronic brake

STANDARD



Scalloped Blade



2 Dust Collectors

TECHNICAL SPECIFICATIONS

CAPACITY

2wb: 2" max.

4ws: 2" max.

6ws: 1¾" max.

Industrial: 2" max.

VOLTAGES

220/240 V, 1Ph, 50/60 Hz

220/240 V, 3Ph, 50 Hz

380/415 V, 3Ph, 50 Hz

208/240 V, 3Ph, 60 Hz

Other voltages available
on request

ROTATION SPEED (CUT)

3000 rpm

ROTATION SPEED (SKIVE)

200 rpm

DIMENSIONS

835 x 545 x 640 mm

(33 x 21 x 25")

PACKAGING

1170 x 770 x 1100 mm

46 x 30 x 43"

SCALLOPED BLADE DIAMETER

300 mm (11.8")

MAX HOSE OD.

85 mm (3.34")

NET WEIGHT

85 kg (187 lb)

MOTOR

2.2 kW

GROSS WEIGHT

100 kg (220 lb)

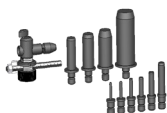
TECHNICAL FEATURES

Skiving tools for External Skiving (ESE) and for Internal Skiving (IS) to be ordered separately

OPTIONAL



Cutting Rail



Tool Kit ESE



Tool Kit IS



Smoke extractor

S CUT 55 L

BASIC AND PROFESSIONAL
WORKSHOP CUTTER

KEY FEATURES

- Compact design
- Easy and safe to use
- Slotted blade for clean cut
- High performance and efficient cutting with minimal smoke
- Ergonomic, easy to clean
- Integrated dust collector

STANDARD

Smoke suction
connector

Dust collector



Slotted blade

TECHNICAL SPECIFICATIONS

CAPACITY*

- 2wb: 3" max.
- 4ws: 2-1/2" max.
- 6ws: 2" max.
- Industrial: 3" max.

VOLTAGES

- 220/240 V, 1Ph, 50/60 Hz
- 220/240 V, 3Ph, 50 Hz
- 380/415 V, 3Ph, 50 Hz
- 208/240 V, 3Ph, 60 Hz
- Other voltages available on request

ROTATION SPEED

3000 rpm

DIMENSIONS

830 x 520 x 1160 mm
(33 x 20 x 46")

SCALLOPED BLADE DIAMETER

400 mm (15.7")

MAX HOSE OD.

95 mm (3.74")

TECHNICAL SPECIFICATIONS

Diameter of suction connector :
125 mm (5")

MOTOR

5.5 kW

NET WEIGHT

135 kg (298 lb)

* Indicative capacities depending on hose type

OPTIONAL



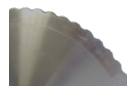
Cutting Rail



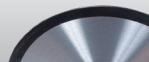
Decoiler



DV 32



Scalloped blade



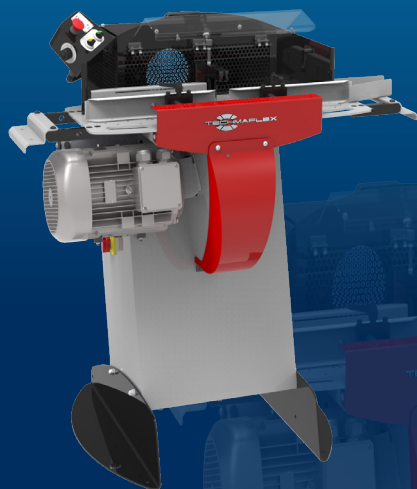
Smooth blade



Smoke extractor

S CUT 55/P

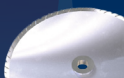
FULL SERVICE WORKSHOP, STARTER PRODUCTION UNITS
STAND TYPE CUTTING MACHINE



STANDARD



Control Panel



Slotted Blade



Feeding Guide



Dust Collector

KEY FEATURES

Versatile, slotted blade for high performance with minimal smoke

Ergonomic and functional design

Double foot pedal system

Safety cover and feeding guides for hose (easy and fast cutting operation)

Digital counter for maintenance assistance

Adjustable speed for cutting on pneumatic version

TECHNICAL SPECIFICATIONS

CAPACITY

2wb: 2" max.

4ws: 2" max.

6ws: 2" max.

Industrial: 2"

ROTATION SPEED

3000 rpm

SLOTTED BLADE DIAMETER

400 mm (15.7")

MAX HOSE OD.

80 mm (3.15")

MOTOR

7.5 kW

VOLTAGES

220/240 V, 1Ph, 50/60 Hz

220/240 V, 3Ph, 50 Hz

380/415 V, 3Ph, 50 Hz

208/240 V, 3Ph, 60 Hz

Other voltages available on request

DIMENSIONS

1140 x 1000 x 1280 mm

(45 x 39 x 50")

PACKAGING

1600 x 1200 x 1600 mm

(63 x 47 x 63")

NET WEIGHT

240 kg (529 lb)

GROSS WEIGHT

280 kg (617 lb)

TECHNICAL FEATURES

Diameter of the suction connection: 150 mm (6")

Options: Pneumatic bending system, scalloped blade

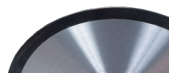
OPTIONAL



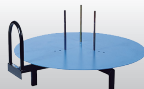
Cutting Rail



Decoiler



Smooth blade



DV 32



Smoke extractor

S CUT 75/P

EXPERT SERVICE LINE
STAND TYPE CUTTING MACHINE

Pneumatic version



Manual version

KEY FEATURES

Very powerful

Heavy duty for difficult cuts

Resistant for extreme cuts

New design:

- Easy maintenance
- Efficiency for smoke extraction

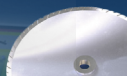
Motor brake (option)

Pneumatic version (option)

Option for industrial hose:

- Blade 540 mm for hoses with external OD max 150 mm

STANDARD



Slotted Blade

TECHNICAL SPECIFICATIONS

CAPACITY

2wb: 3" max.

4ws: 2" max.

6ws: 2" max.*

ROTATION SPEED

3000 rpm

SLOTTED BLADE DIAMETER

520 mm (20.5") included

MAX HOSE OD.

125 mm (5")**

MOTOR

7.5 kW

VOLTAGES

220/240 V, 1Ph, 50/60 Hz

220/240 V, 3Ph, 50 Hz

380/415 V, 3Ph, 50 Hz

208/240 V, 3Ph, 60 Hz

DIMENSIONS

910 x 820 x 1280 mm

(36 x 32 x 50")

NET WEIGHT

215 kg (474 lb)

TECHNICAL FEATURES

Diameter of suction connection: 130 mm

Electronic soft start

Optional tool:

Motor brake

Pneumatic version

Other blade on demand

*Minimum aire pressure : 9,5 bar

**150 mm with blade option 540 mm

OPTIONAL



Cutting Rail



Decoiler



Smooth blade



DV 32



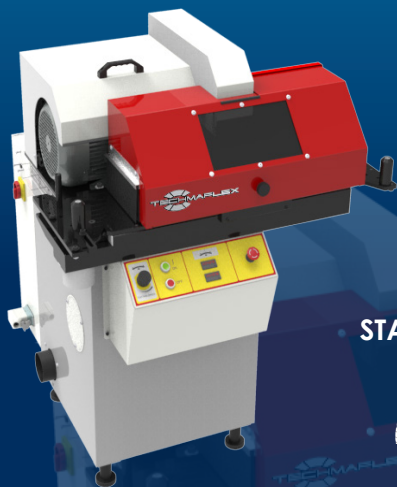
Smoke extractor

P CUT 90

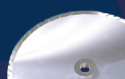
EXPERT SERVICE LINE
STAND TYPE CUTTING MACHINE

KEY FEATURES

- Very powerful
- Heavy duty for difficult cuts
- Hydraulic bending
- Motor brake
- Electronic soft start
- Smoke suction integrated in cutting table



STANDARD



Slotted Blade



Production Counters

Smoke Suction
ConnectorCME Electrical
Footswitch

TECHNICAL SPECIFICATIONS

CAPACITY

2wb: 3 1/4" max.

4ws: 3 1/4" max.

6ws: 3" max.

ROTATION SPEED

3000 rpm

SLOTTED BLADE DIAMETER

520 mm (20.5") included

MAX HOSE OD.

125 mm (5")

MOTOR

9.0 kW

TECHNICAL FEATURES

Diameter of suction connection: 110 mm (4.33")

VOLTAGES

220/240 V, 1Ph, 50/60 Hz

220/240 V, 3Ph, 50 Hz

380/415 V, 3Ph, 50 Hz

208/240 V, 3Ph, 60 Hz

DIMENSIONS

1000 x 1060 x 1350 mm

(39 x 42 x 53")

NET WEIGHT

260 kg (573 lb)

OPTIONAL



Cutting Rail



Decoiler



DV 32



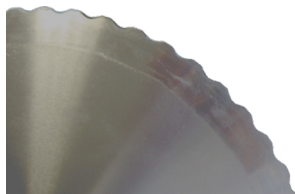
Smoke extractor

ACCESSORIES AND TOOLS

CUTTING DISCS

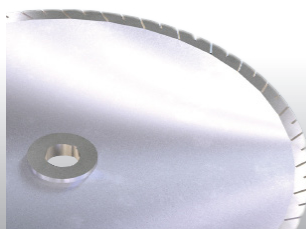
SCALLOPED BLADE TYPE

The scalloped blade is suitable for all hose types. It is able to reach a high quality of cutting surface and is the standard on 254 and 300 mm blades.



SLOTTED BLADE TYPE

The slotted blade is recommended for cutting standard and heavy duty hoses. It is ideal for continuous service, as the blade profile has been optimised to maintain a low temperature on the cutting edge. This blade provides an extended operational life of up to 2 times superior to the previous blade, and is the standard on 400 and 520 mm blades. It is optional on diameter 254 mm.



MOTOR BRAKE

The motor brake is a device which stops the disc immediately when the stop button is pushed.

PNEUMATIC BENDING

Available on S CUT 55 and S CUT 75.

Pneumatic bending facilitates cutting, as the operator does not have to force the hose on the blade. The pneumatic system, activated by a foot switch, offers hands free operation. This is the same principle for the hydraulic bending on P CUT 90.

H SKIVE

FIELD SERVICE & MOBILE WORKSHOP
MANUAL, PORTABLE SKIVING TOOL

KEY FEATURES

Portable, lightweight

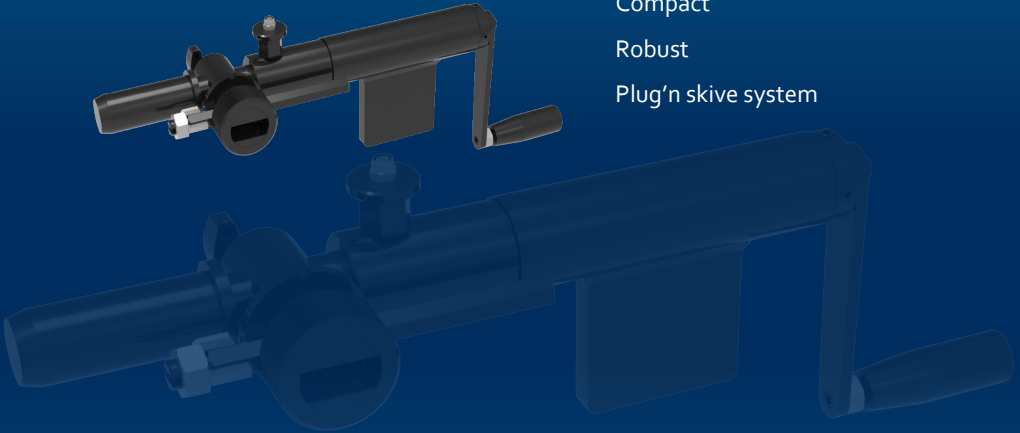
Economic

Simple

Compact

Robust

Plug'n skive system



TECHNICAL SPECIFICATIONS

CAPACITY

2wb: 2" max.

4ws: 2" max.

DIMENSIONS

413 x 52 x 224 mm

(16 x 2 x 9")

NET WEIGHT

3 kg (7 lb)

TECHNICAL FEATURES

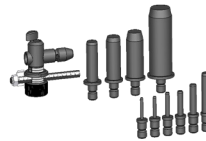
Tool selection:

- External Skiving Kit (ESE)
including 10 mandrels
(6-8-10-13-16-19-25-32-
38-50)

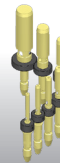
- Internal Skiving Kit (IS)
including 7 mandrels (13-
16-19-25-32-38-50)

Internal skiving tools can
also be ordered per diameter

OPTIONAL



Tool Kit ESE



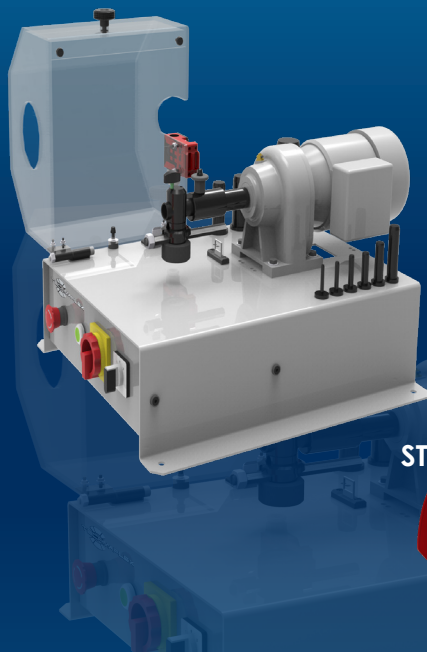
Tool Kit IS

S SKIVE 100

SMALL SERVICE WORKSHOP
BENCHTOP SKIVING

KEY FEATURES

- Plug'n skive system
- Compact & stable
- Safety switch on the cover
- Good visibility
- Tool storage included
- Foot pedal drive with emergency stop
- 2-way rotation



STANDARD



CME Electrical
Footswitch

TECHNICAL SPECIFICATIONS

CAPACITY

2wb: 2" max.
4ws: 2" max.

ROTATION SPEED

100 rpm

MOTOR

0.25 kW

VOLTAGES

220/240 V, 1Ph, 50 Hz
380/415 V, 3Ph, 50 Hz
220/240 V, 1Ph, 60 Hz
380/415 V, 3Ph, 60 Hz

DIMENSIONS

500 x 660 x 360 mm
(19 x 26 x 14")

PACKAGING

800 x 600 x 700 mm
(31 x 24 x 28")

NET WEIGHT

45 kg (99 lb)

GROSS WEIGHT

55 kg (121 lb)

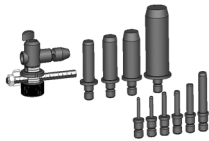
TECHNICAL FEATURES

Tools available (to be
ordered separately)
ESE, IS, ESP1, ESP2

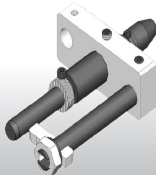
OPTIONAL



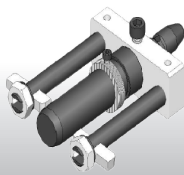
Tool Kit IS



Tool Kit ESE



Tool Kit ESP 1



Tool Kit ESP 2

P SKIVE 300

STARTER & PROFESSIONAL WORKSHOP STAND TYPE SKIVING MACHINE



KEY FEATURES

- Plug'n skive system
- Large dust collector
- Robust & easily adjustable knife for quick and easy changeover
- Suitable for high volume production
- 2-way rotation
- Speed regulator for single-phase version

TECHNICAL SPECIFICATIONS

CAPACITY

- 2wb: 2" max.
- 4ws: 2" max.
- 6ws: 3" max. *

ROTATION SPEED

300 rpm

MOTOR

0.9 kW

VOLTAGES

- 220/240 V, 3Ph, 50 Hz
- 380/415 V, 3Ph, 50 Hz
- 208/240 V, 3Ph, 60 Hz
- 380/415 V, 3Ph, 60 Hz

DIMENSIONS

675 x 550 x 1130 mm
(27 x 22 x 44")

*with clamping system

PACKAGING

800 x 600 x 1200 mm
(32 x 24 x 47")

NET WEIGHT

100 kg (220 lb)

GROSS WEIGHT

160 kg (353 lb)

TECHNICAL FEATURES

Options available:
hose clamping system
(recommended for hoses
from 2")

Tools available (to be
ordered separately):
ESA, IS, ESP₁, ESP₂

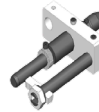
OPTIONAL



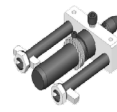
Tool Kit IS



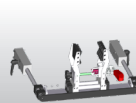
Tool kit ESA



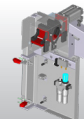
Tool Kit ESP 1



Tool Kit ESP 2



Manual Hose
Clamping System



Pneumatic Hose
Clamping System



Speed Regulator

ACCESSORIES AND TOOLS

EXTERNAL SKIVING TOOLS

Depending on the machine and on customer needs, Techmaflex offers 3 types of external skiving tools:

ESE (EXTERNAL SKIVING ECONOMIC)

For H Skive, S Skive 100 and S Duo 30

The ESE kit includes 10 mandrels: $\frac{1}{4}$ ", $\frac{5}{16}$ ", $\frac{3}{8}$ ", $\frac{1}{2}$ ", $\frac{5}{8}$ ", $\frac{3}{4}$ ", 1", 1 $\frac{1}{4}$ ", 1 $\frac{1}{2}$ ", 2"

ESA (EXTERNAL SKIVING ADJUSTABLE)

For P Skive 300

The ESA kit includes 11 mandrels: $\frac{3}{16}$ ", $\frac{1}{4}$ ", $\frac{5}{16}$ ", $\frac{3}{8}$ ", $\frac{1}{2}$ ", $\frac{5}{8}$ ", $\frac{3}{4}$ ", 1", 1 $\frac{1}{4}$ ", 1 $\frac{1}{2}$ ", 2"

ESA mandrels are also available in 2 $\frac{1}{2}$ " and 3"

ESP (EXTERNAL SKIVING PRODUCTION)

For S Skive 100 and P Skive 300

ESP tools are individual 'skiving heads' intended to be pre-set to the right depth and length for greater productivity. They are recommended for batch skiving operations and a second knife can be added for abrasion resistant covers.

ESP is available in: $\frac{3}{16}$ ", $\frac{1}{4}$ ", $\frac{5}{16}$ ", $\frac{3}{8}$ ", $\frac{1}{2}$ ", $\frac{5}{8}$ ", $\frac{3}{4}$ ", 1", 1 $\frac{1}{4}$ ", 1 $\frac{1}{2}$ ", 2", 2 $\frac{1}{2}$ " and 3"

INTERNAL SKIVING TOOLS

IS (INTERNAL SKIVING)

For all machines

The IS kit includes 7 mandrels: $\frac{1}{2}$ ", $\frac{5}{8}$ ", $\frac{3}{4}$ ", 1", 1 $\frac{1}{4}$ ", 1 $\frac{1}{2}$ ", 2"

They are also available in $\frac{5}{8}$ ", 2 $\frac{1}{2}$ " and 3"

The ring is heat treated to resist the abrasion of the hose wires.

Optional venturi system with IS tool.

ACCESSORIES AND TOOLS

HOSE CLAMPING SYSTEM

Recommended for skiving hoses over 2" (DN 50)

PLUG'N SKIVE SYSTEM

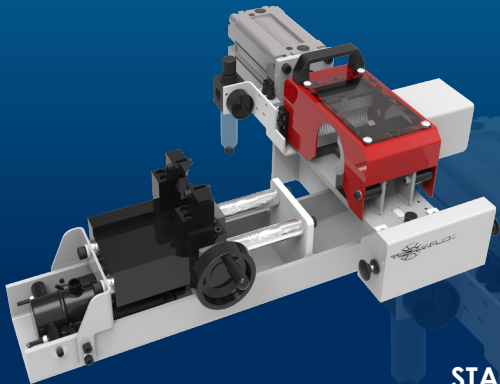
All Techmaflex skiving machines are equipped with the Plug'n Skive System which allows the quick and easy insertion of tools. With the Plug'n Skive System no tools are needed to insert the skiving mandrel, simply push the mandrel into the locking system to unlock it, lift a knob and pull out the tool.

S PUSH 1500

EXPERT SERVICE LINE
BENCHTOP COUPLING INSERTER

KEY FEATURES

Compact
Sturdy
Powerful



STANDARD



Hydro-pneumatic
pump

TECHNICAL SPECIFICATIONS

CAPACITY

2wb: 2" max.

4ws: 2" max.

6ws: 2" max.

DIMENSIONS

750 x 660 x 300 mm

(30 x 26 x 12")

NET WEIGHT

70 kg (154 lb)

POWER SUPPLY

Compressed air (7 bar)

TECHNICAL FEATURES

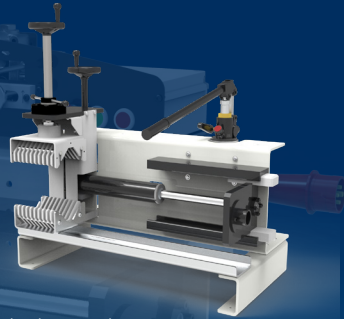
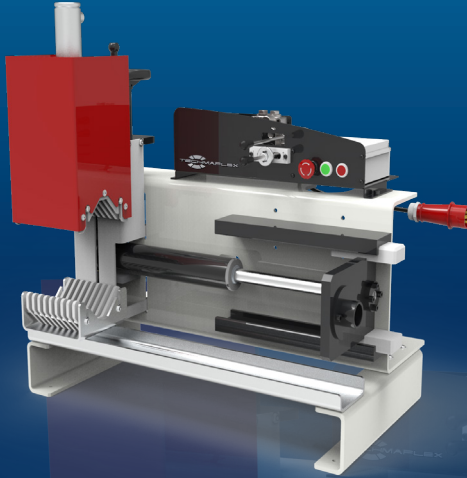
Optional tool: for small
bore 3/4", 3/8", 1/2" shell

S PUSH 2000

EXPERT SERVICE LINE
BENCHTOP COUPLING INSERTER

KEY FEATURES

- Compact
- Sturdy
- Powerful hydraulic cylinder
- Insert centring device
- Joystick operated clamping and insertion



Hydraulic manual version

TECHNICAL SPECIFICATIONS

CAPACITY

6WS: 3/4" - 2" with special tool
6WS: 2" - 4"
Industrial: 6"

DIMENSIONS

800 x 500 x 900 mm
(31 x 20 x 35")

INSERTION SPEED*

28 mm/s

VOLTAGES

380/415, 3 Ph, 50 Hz

INSERTION STROKE

300 mm

MAXIMUM FLANGE

250 mm

INSERTION FORCE

2 000 daN

CLAMPING LENGTH

200 mm

POWER*

1.5 kW

NET WEIGHT

150 kg (330 lb)

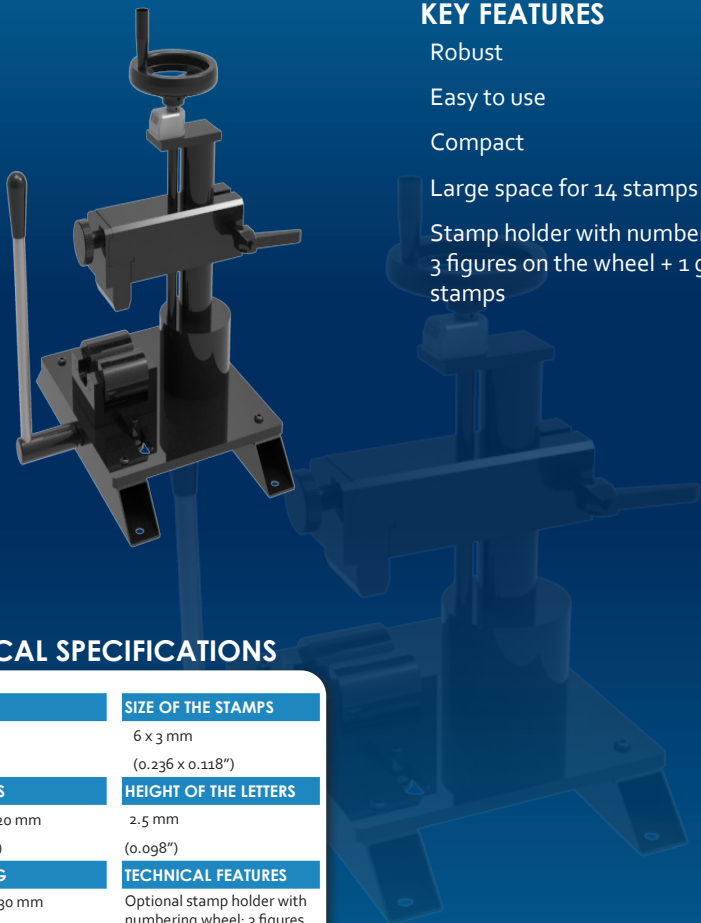
* with the electrical version

S MARK 50

AFTER MARKET SERVICE
BENCHTOP, FERRULE MARKING

KEY FEATURES

- Robust
- Easy to use
- Compact
- Large space for 14 stamps
- Stamp holder with numbering wheel;
3 figures on the wheel + 1 groove for
stamps



TECHNICAL SPECIFICATIONS

| CAPACITY | SIZE OF THE STAMPS |
|---------------------------------------|--|
| 2wb: 4" max. | 6 x 3 mm |
| 4ws: 4" max. | (0.236 x 0.118") |
| DIMENSIONS | HEIGHT OF THE LETTERS |
| 390 x 360 x 520 mm (15 x 14 x 20") | 2.5 mm (0.098") |
| PACKAGING | TECHNICAL FEATURES |
| 800 x 600 x 830 mm (31 x 24 x 33") | Optional stamp holder with numbering wheel: 3 figures on the wheel and one groove for 10 stamps |
| NET WEIGHT | STAMP BOX |
| 34 kg (75 lb) | Includes stamp box of 100 stamps & 20 blanks |
| GROSS WEIGHT | |
| 50 kg (110 lb) | |
| STANDARD STAMP HOLDER | |
| 2 x 14 stamps | |

S CLEAN 50

CK 50



TECHNICAL SPECIFICATIONS

NUMBER OF NOZZLES

10 to suit hose ID

COMPRESSED AIR

7 bar

MINIMUM INTERNAL DIAMETER OF HOSE

6 mm

MAXIMUM INTERNAL DIAMETER

51 mm

TECHNICAL FEATURES

Includes 575 pellets & projectile catcher

DV 32 - OEM DECOILER

DV 32



OEM



Our range of unwinders easily adapts to different types of reels, from cardboard to plastic and wood, supporting up to 100kg. Stable and equipped with a hose guiding system, they guarantee greater safety and efficiency.

Techmaflex unwinders are also suitable for winding loose hoses.

The DV version is supplied with manual cutting and, thanks to its low centre of gravity, guarantees excellent stability and ease of hose loading.

The OEM version, in addition to the advantages of the DV version, has an even more efficient and precise height adjustment, facilitating the insertion of the tube into the cutting machine. The motorised version is available on request.

HOSE DECOILERS - HRD 07 / HRD 08

**HRD 07**

| | |
|----------------------------------|-----------------------|
| MAXIMUM NUMBER OF COILS | 7 |
| MAXIMUM WEIGHT/COIL | 80 kg |
| MINIMUM INTERNAL DIAMETER | 150 mm |
| MAXIMUM EXTERNAL DIAMETER | 800 mm |
| MAXIMUM HEIGHT | 170 mm |
| DIMENSIONS | 1450 x 1500 x 2000 mm |
| NET WEIGHT | 129 kg |

| | |
|----------------------------------|-----------------------|
| MAXIMUM NUMBER OF COILS | 8 |
| MAXIMUM WEIGHT/COIL | 100 kg |
| MAXIMUM EXTERNAL DIAMETER | 600 mm |
| MAXIMUM WIDTH | 450 mm |
| ROLLER TUBE DIAMETER | 60 mm |
| DIMENSIONS | 1450 x 1400 x 2148 mm |
| NET WEIGHT | 150 kg |

The coils are not provided.

**HRD 08**

INDUSTRIAL DECOILER - IDM 2200

**VOLTAGES**

400 V, 3Ph, 50 Hz

DIMENSIONS

2600 x 2600 x 1600 mm

(102 x 102 x 63")

NET WEIGHT

714 kg (1570 lb)

MOTOR

3 kW with speed control

POWER TORQUE

1200 N

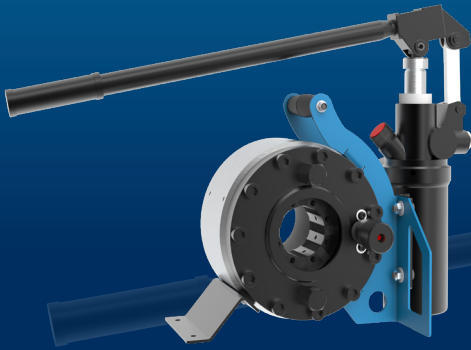
TABLE DIAMETER

2200 mm

Robust, motorised decoiler for large bore industrial hose. Comes with 6 manually adjustable centring pins, remote stop-start controller and a high torque, 3kW motor with speed control.

H CRIMP 80 EVO

FIELD SERVICE & MOBILE WORKSHOP
HAND PUMP, PORTABLE



KEY FEATURES

- Compact
- Lightweight
- Easy to use
- Balanced design
- Dual stage pump

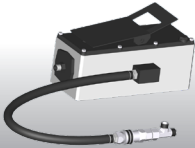
TECHNICAL SPECIFICATIONS

| CAPACITY* | DIMENSIONS |
|---|---------------------|
| 2wb: 1" max. | 360 x 270 x 390 mm |
| 4ws: 1/2" max. | (14 x 11 x 15") |
| CRIMP RANGE | PACKAGING |
| 6 - 43 mm (0.236 - 1.693") | 800 x 600 x 830 mm |
| CRIMP FORCE | (31 x 24 x 33") |
| 80 t | NET WEIGHT |
| OPENING WITH DIES | 26 kg (57 lb) |
| +20 mm (+0.787") | GROSS WEIGHT |
| COMPLETE OPENING | 39 kg (86 lb) |
| 59 mm (2.323") | TECHNICAL FEATURES |
| MASTER DIE LENGTH | Hand pump: 5000 psi |
| 56 mm (2.205") | (double speed) |
| STANDARD DIES | |
| 16, 18, 20, 22, 24, 27, 30** | |
| *Indicative capacities depending on hose and fitting type | |
| ** Master-dies used as dies set N°39 | |

OPTIONAL



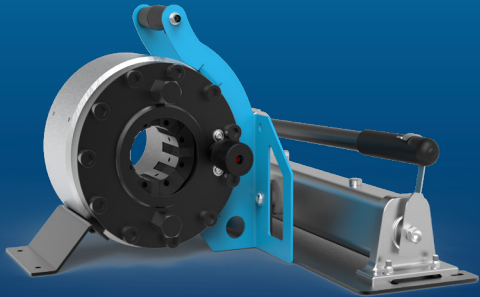
Maintenance Kits



Hydro-pneumatic
Pump

H CRIMP 110 EVO

FIELD SERVICE & MOBILE WORKSHOP
HAND PUMP, PORTABLE



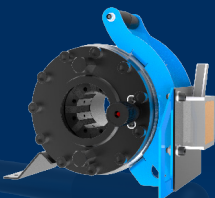
KEY FEATURES

- Flexible
- Portable
- Robust (protected narrow head)
- Multi-positioning (with removable plate)

OTHER VERSIONS AVAILABLE



Head only



Magnet version

TECHNICAL SPECIFICATIONS

CAPACITY*

2wb: 1" max.

4ws: 1" max.

CRIMP RANGE

6 - 43 mm (0.236 - 1.693")

CRIMP FORCE

110 t

OPENING WITH DIES

+20 mm (+0.787")

COMPLETE OPENING

59 mm (2.323")

MASTER DIE LENGTH

60 mm (2.362")

STANDARD DIES

16, 18, 20, 22, 24, 27, 30,

DIMENSIONS

289 x 237 x 270 mm

(11 x 9 x 10")

PACKAGING

800 x 600 x 830 mm

(31 x 24 x 33")

NET WEIGHT

29 kg (63 lb)

Magnet version: 30kg (66 lb)

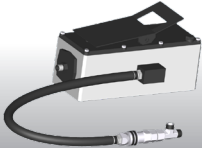
WEIGHT (HEAD ONLY)

21 kg (46 lbs)

OPTIONAL



Maintenance Kits



Hydro-pneumatic Pump

* Indicative capacities depending on hose and fitting type

** Master-dies used as dies set N°39

H CRIMP 137

FIELD SERVICE & MOBILE WORKSHOP
HAND PUMP, PORTABLE

KEY FEATURES

High capacity

Narrow head

Audio-visual signal

350 bar technology robust & reliable

Large opening



TECHNICAL SPECIFICATIONS

CAPACITY*

2wb / 4ws: 1 3/4" max.

Industrial: 1 1/2" max.

CRIMP RANGE

4 - 70 mm (0.157 - 2.756")

CRIMP FORCE

137 t

OPENING WITH DIES

+28 mm (+1.102")

COMPLETE OPENING

108 mm (4.252")

MASTER DIE LENGTH

75 mm (2.962")

STANDARD DIES

14, 16, 18, 20, 22, 24, 27, 30,
33, 36, 39, 42, 45, 48, 51
and Refrifast dies 14, 18, 21

DIMENSIONS

480 x 250 x 340 mm
(19 x 10 x 13")

PACKAGING

800 x 600 x 830 mm

(31 x 24 x 33")

NET WEIGHT

55 kg (121 lb)

GROSS WEIGHT

75 kg (165 lb)

*Indicative capacities depending on hose and fitting type

OPTIONAL



Maintenance Kit



Quick Change
Gun



Aluminium Quick
Change Gun



Die Storage Panel



Hydro-pneumatic
Pump



Marking Dies



Die Sets for Brake
& Air Conditioning
Hoses

S CRIMP 137 EVO R

MAINTENANCE WORKSHOP
VERTICAL BENCHTOP

KEY FEATURES

- Ergonomically positioned adjustable head
- Axis of the head situated perpendicular to the operator
- Compact



TECHNICAL SPECIFICATIONS

CAPACITY*

2wb / 4ws: 1½" max.
Industrial: 1 1/2" max.

CRIMP RANGE

4- 70 mm (0.157 - 2.756")

CRIMP FORCE

137 t

OPENING WITH DIES

+28 mm (+1.102")

COMPLETE OPENING

108 mm (4.252")

MASTER DIE LENGTH

75 mm (2.953")

STANDARD DIES

14, 16, 18, 20, 22, 24, 27, 30,
33, 36, 39, 42, 45, 48, 51

NOISE LEVEL

70 dB A

*Indicative capacities depending on hose and fitting type

MOTOR

1.5 kW (110V)
2.2 kW (230V)

VOLTAGES

110 V, 1 Ph, 60 Hz
220/240 V, 1 Ph, 50 Hz
380/415 V, 3 Ph + N, 50 Hz
+12/24V

Other voltages available
on request

DIMENSIONS

360 x 530 x 620 mm
(14 x 21 x 25")

NET WEIGHT

85 kg (187 lb)

GROSS WEIGHT

89 kg (196 lb)

OPTIONAL



Maintenance Kit



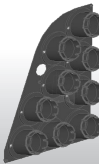
Die Storage Panel



Aluminium Quick
Change Gun

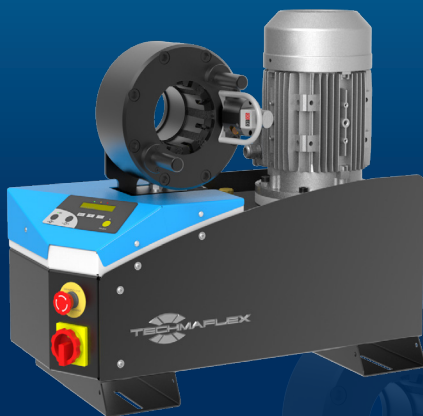


Quick Change
Gun



Die Storage Panel
EVO R

S CRIMP 137 EVO

ASSEMBLING FOR FIELD REPAIR
BENCHTOP CRIMP MACHINE

KEY FEATURES

Crimp force of up to 137 tonnes for hoses up to 1½"

Easy to use and robust

Extensive range of dies to suit crimping of hydraulic hoses

Easy set up and maintenance

Fast and reliable

Digital micrometer

Model shown equipped with SC control panel

CONTROL OPTIONS AVAILABLE ON REQUEST



SC



SCE



SCS

TECHNICAL SPECIFICATIONS

CAPACITY*

2wb / 4ws: 1¾" max.

Industrial: 1 1/2" max.

CRIMP RANGE

4 - 70 mm (0.157 - 2.756")

CRIMP FORCE

137 t

OPENING WITH DIES

+28 mm (+1.102")

COMPLETE OPENING

108 mm (4.252")

MASTER DIE LENGTH

75 mm (2.953")

STANDARD DIES

14, 16, 18, 20, 22, 24, 27, 30, 33, 36, 39, 42, 45, 48, 51

NOISE LEVEL

70 dB A

MOTOR

4.0 kW

VOLTAGES

220/240 V, 1Ph, 50/60 Hz

220/240 V, 3Ph, 50 Hz

380/415 V, 3Ph, 50 Hz

208/240 V, 3Ph, 60 Hz

Other voltages available on request

DIMENSIONS

765 x 400 x 650 mm

(30 x 16 x 26")

NET WEIGHT

160 kg (353 lb)

*Indicative capacities depending on hose and fitting type

OPTIONAL



Maintenance Kit



Electrical Footswitch



Die Storage Panel



Die Storage Table



Die Storage Table EVO



Quick Change Gun



Aluminium Quick Change Gun



Digital Caliper



Die Sets for Brake & Air Conditioning Hoses

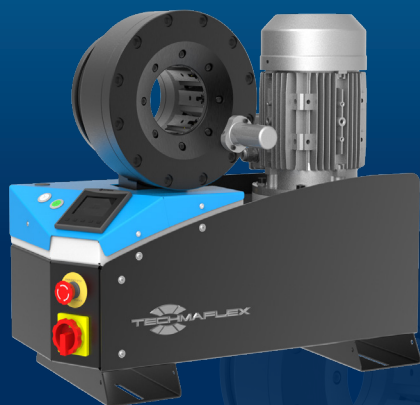


Marking Dies



Die Storage Panel EVO

S CRIMP 240 EVO

PROFESSIONAL WORKSHOP
BENCHTOP

KEY FEATURES

Crimp force of up to 240 tonnes for hoses up to 2"

Easy to use and robust

Radial die movement

High crimping force

Extensive range of dies to suit crimping of hydraulic hoses

Easy set up and maintenance

Fast and reliable

Model shown equipped with SCE control panel

CONTROL OPTIONS AVAILABLE ON REQUEST



SC



SCE



SCS

TECHNICAL SPECIFICATIONS

CAPACITY*

2wb: 2" max.

4ws: 2" max.

6ws: 1 1/2" max.

CRIMP RANGE

4 - 76 mm (0.157 - 2.992")

CRIMP FORCE

240 t

OPENING WITH DIES

+38 mm (+1.496")

COMPLETE OPENING

118 mm (4.645")

MASTER DIE LENGTH

100 mm (3.937")

STANDARD DIES

14, 16, 18, 20, 22, 24, 27, 30, 33, 36, 39, 42, 45, 48, 51, 57, 63, 66, 70

*Indicative capacities depending on hose and fitting type

NOISE LEVEL

<70 dB A

MOTOR

4.0 kW

VOLTAGES

220/240 V, 1Ph, 50/60 Hz

220/240 V, 3Ph, 50 Hz

380/415 V, 3Ph, 50 Hz

208/240 V, 3Ph, 60 Hz

Other voltages available on request

DIMENSIONS

765 x 400 x 650 mm

(30 x 16 x 26")

NET WEIGHT

165 kg (364 lb)

OPTIONAL



Maintenance Kit



Electrical Footswitch



Die Storage Panel



Die Storage Table



Die Storage Table EVO



Quick Change Gun



Aluminium Quick Change Gun



Mechanical Backstop



Die Sets for Brake & Air Conditioning Hoses



Marking Dies



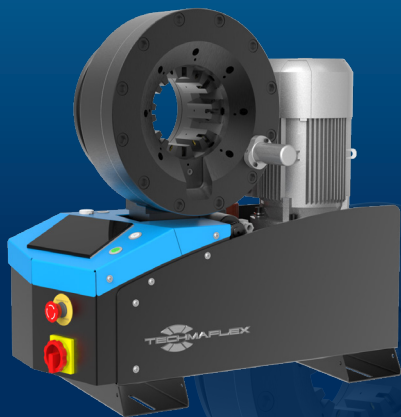
Digital caliper



Die Storage Panel EVO

S CRIMP 350 EVO / S CRIMP 350 L

FULL SERVICE WORKSHOP
BENCHTOP; VERY HIGH CRIMP FORCE



KEY FEATURES

Crimp force up to 350 tonnes for hoses up to 3"

Easy to use and robust

Automatic maintenance alerts

Groove for 90° long drop fittings

Also available as S CRIMP 350 L with 4.0 kW motor

Model shown equipped with SCS control panel

CONTROL OPTIONS AVAILABLE ON REQUEST



TECHNICAL SPECIFICATIONS

CAPACITY*

2wb: 3" max.

Industrial: 4" max.

4ws: 2" max.

6ws: 2" max.

CRIMP RANGE

4 - 130 mm (0.157 - 5.118")

CRIMP FORCE

350 t

OPENING WITH DIES

+54 mm (+2.125")

COMPLETE OPENING

180 mm (7.086")

MASTER DIE LENGTH

115 mm (4.523")

STANDARD DIES

14, 16, 18, 20, 22, 24, 27, 30, 33, 36, 39, 42, 45, 48, 51, 57, 63, 66, 70, 73, 76

NOISE LEVEL

<70 dB A

MOTOR

5.5 kW / 4 kW

VOLTAGES

220/240 V, 3Ph, 50 Hz

380/415 V, 3Ph, 50 Hz

208/240 V, 3Ph, 60 Hz

380/415 V, 3Ph, 60 Hz

DIMENSIONS

765 x 400 x 750 mm

(30 x 16 x 30")

NET WEIGHT

262 kg (578 lb)

TECHNICAL FEATURES

- Automatic maintenance alerts
- Cylinder protection against dust - durable design
- Also available as S CRIMP 350 EVO L with 4.0 kW Motor

*Indicative capacities depending on hose and fitting type

OPTIONAL



Maintenance Kit



Electrical Footswitch



Die Storage Panel



Die Storage Table



Die Storage Table EVO



Quick Change Gun



Aluminium Quick Change Gun



Mechanical Backstop



Die Sets for Brake & Air Conditioning Hoses



Marking Dies

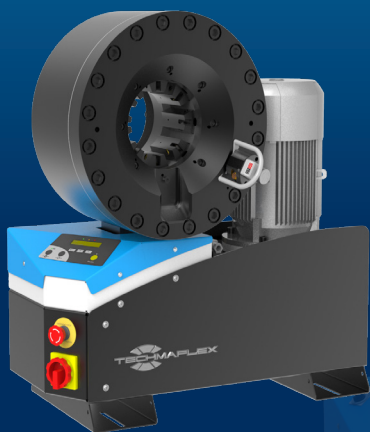


Digital caliper



Die Storage Panel EVO

S CRIMP 420 EVO

ASSEMBLING FOR FIELD REPAIR
BENCHTOP CRIMPING MACHINE

KEY FEATURES

- High crimping force of 420 tonnes
- Robust design for transport and operation in harsh environments
- Protected cylinders for trouble-free operation in high dust environments
- Large opening suitable for large bore hoses
- Easy maintenance due to dust collector foam pads
- Model shown equipped with SC control panel

CONTROL OPTIONS AVAILABLE ON REQUEST



OPTIONAL

TECHNICAL SPECIFICATIONS

CAPACITY*

6ws: 3" max.

Industrial: 4" max.

CRIMP RANGE

4 - 130 mm (0.157 - 5.118")

CRIMP FORCE

420 t

OPENING WITH DIES

+48 mm (+1.9 inch)

COMPLETE OPENING

178 mm (7.0 inch)

MASTER DIE LENGTH

120 mm (4.724 inch)

STANDARD DIES

14, 16, 18, 20, 22, 24, 27, 30,
33, 36, 39, 42, 45, 48, 51, 57,
63, 66, 70, 73, 76

NOISE LEVEL

<70 dB A

MOTOR

5.5 kW

VOLTAGES

220/240 V, 3Ph, 50 Hz

380/415 V, 3Ph, 50 Hz

208/240 V, 3Ph, 60 Hz

380/415 V, 3Ph, 60 Hz

DIMENSIONS

765 x 500 x 800 mm

(30 x 20 x 32")

PACKAGING

745 x 1150 x 945 mm

(29 x 45 x 37")

NET WEIGHT

395 kg (871 lb)

*Indicative capacities depending on hose and fitting type



Maintenance Kit



Electrical Footswitch



Die Storage Panel



Die Storage Table



Die Storage Table EVO



Quick Change Gun



Aluminium Quick Change Gun



Mechanical Backstop



Die Sets for Brake & Air Conditioning Hoses



Marking Dies

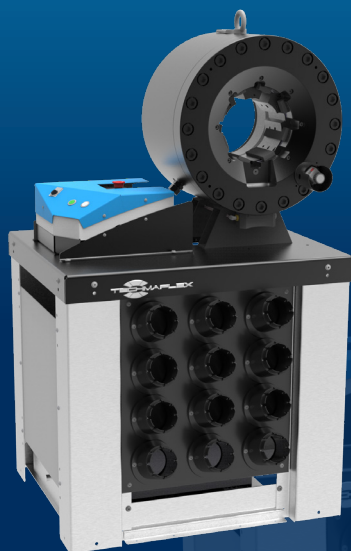


Digital caliper



Die Storage Panel EVO

S CRIMP 450

ASSEMBLING FOR FIELD REPAIR
BENCHTOP CRIMP MACHINE

KEY FEATURES

- High crimp force
- Large opening
- Wide family of dies for industrial hoses
- Long master dies
- Robust - designed for harsh environments
- Low noise level
- Easy die set-up with ergonomic gun
- Metallic guard for the set stop

STANDARD



Electrical Footswitch

Aluminium Quick
Change Gun

TECHNICAL SPECIFICATIONS

CAPACITY*

6ws: 3" max.
Industrial: 6" max.

CRIMP RANGE

4 - 180 mm (0.157 - 7.087")

CRIMP FORCE

450 t

OPENING WITH DIES

+70 mm (+2.755")

COMPLETE OPENING

230 mm (9.055")

MASTER DIE LENGTH

125 mm (4.921")

STANDARD DIES

16, 18, 20, 22, 24, 27, 30, 33,
36, 39, 42, 45, 48, 51, 57, 63,
66, 70, 73, 76

NOISE LEVEL

<65 dB A

MOTOR

5.5 kW

VOLTAGES

220/240 V, 3Ph, 50 Hz
380/415 V, 3Ph, 50 Hz
208/240 V, 3Ph, 60 Hz
380/415 V, 3Ph, 60 Hz

DIMENSIONS

830 x 775 x 1450 mm
(33 x 31 x 57")

PACKAGING

1120 x 1020 x 1770 mm
(44 x 40 x 70")

NET WEIGHT

720 kg (1587 lb)

*Indicative capacities depending on hose and fitting type

OPTIONAL



Marking Dies

Die Sets for Brake
& Air Conditioning
Hoses

V CRIMP 137

FIELD SERVICE & MOBILE WORKSHOP
MOBILE VAN

KEY FEATURES

- Robust and compact design
- Lightweight
- High crimping speed
- Suitable also for 90° elbow fittings
- Cylinder protection
- Remote head mounting option possible

TECHNICAL SPECIFICATIONS

CAPACITY*

2wb / 4ws: 1 1/4" max.
Industrial: 1 1/2" max.

CRIMP RANGE

4 - 70 mm (0.157 - 2.756")

CRIMP FORCE

137 t

OPENING WITH DIES

+28 mm (+1.102")

COMPLETE OPENING

108 mm (4.252")

MASTER DIE LENGTH

75 mm (2.952")

STANDARD DIES

14, 16, 18, 20, 22, 24, 27, 30,
33, 36, 39, 42, 45, 48, 51

NOISE LEVEL

72 dB A

MOTOR

2.0 kW

VOLTAGES

12 V

24 V

DIMENSIONS

650 x 550 x 610 mm

(26 x 22 x 24")

PACKAGING

800 x 600 x 830 mm

(31 x 24 x 33")

NET WEIGHT

103 kg (227 lb)

GROSS WEIGHT

120 kg (265 lb)

*Indicative capacities depending on hose and fitting type

OPTIONAL



Maintenance Kit

Quick Change
GunAluminium Quick
Change Gun

Die Storage Panel

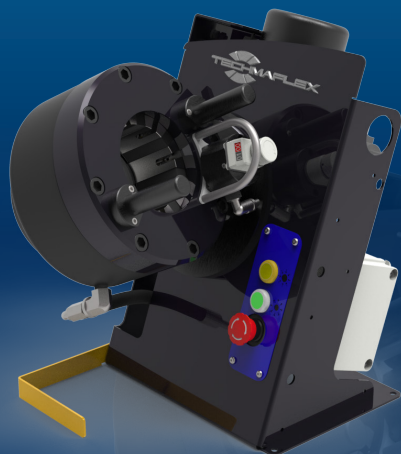


Marking Dies

Die Sets for Brake
& Air Conditioning
Hoses

Battery

V CRIMP 137 EVO R

FIELD SERVICE & MOBILE WORKSHOP
MOBILE VAN

KEY FEATURES

Swivel head for an ergonomic position

Head axis perpendicular to the operator

Compact and lightweight

TECHNICAL SPECIFICATIONS

CAPACITY*

2wb / 4ws: 1 1/4" max.

Industrial: 1 1/2" max.

CRIMP RANGE

4 - 70 mm (0.157 - 2.756")

CRIMP FORCE

137 t

OPENING WITH DIES

+28 mm (+1.102")

COMPLETE OPENING

108 mm (4.252")

MASTER DIE LENGTH

75 mm (2.952")

STANDARD DIES

14, 16, 18, 20, 22, 24, 27,
30, 33, 36, 39, 42, 45, 48, 51

NOISE LEVEL

72 dB A

*Indicative capacities depending on hose and fitting type

MOTOR

2.0 kW

VOLTAGES

12 V

24 V

DIMENSIONS

392 x 398 x 486 mm

(15 x 16 x 19")

PACKAGING

800 x 600 x 830 mm

(31 x 24 x 33")

NET WEIGHT

73 kg (161 lb)

GROSS WEIGHT

90 kg (199 lb)

OPTIONAL



Maintenance Kit



Quick Change Gun



Aluminium Quick Change Gun



Die Storage Panel



Marking Dies



Die Sets for Brake & Air Conditioning Hoses



Front Die Storage



Die Storage Panel EVO



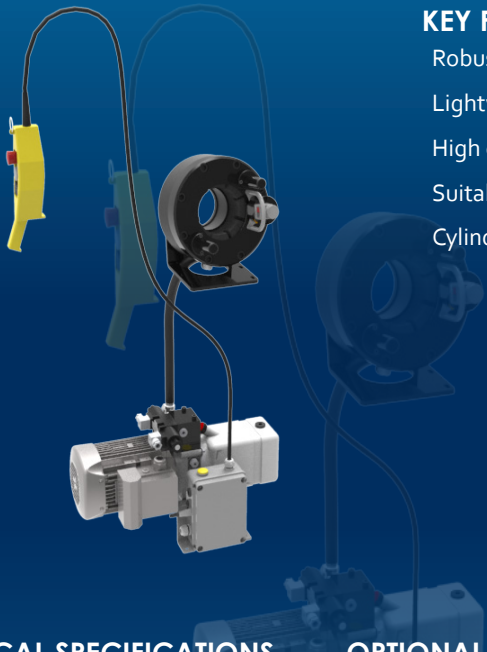
Battery

V CRIMP 137 L

FIELD SERVICE & MOBILE WORKSHOP
MOBILE VAN

KEY FEATURES

- Robust and compact design
- Lightweight
- High crimping speed
- Suitable also for 90° elbow fittings
- Cylinder protection



TECHNICAL SPECIFICATIONS

CAPACITY*

2wb / 4 ws: 1 1/4" max.
Industrial: 1 1/2" max.

CRIMP RANGE

4 - 70 mm (0.157 - 2.756")

CRIMP FORCE

137 t

OPENING WITH DIES

+28 mm (+1.102")

COMPLETE OPENING

108 mm (4.252")

MASTER DIE LENGTH

75 mm (2.952")

STANDARD DIES

14, 16, 18, 20, 22, 24, 27, 30,
33, 36, 39, 42, 45, 48, 51

NOISE LEVEL

72 dB A

MOTOR

2.0 kW

VOLTAGES

12 V

24 V

DIMENSIONS

250 x 320 x 300 mm
(10 x 13 x 12")

PACKAGING

800 x 600 x 830 mm
(31 x 24 x 33")

NET WEIGHT

86 kg (190 lb)

GROSS WEIGHT

102 kg (225 lb)

TECHNICAL FEATURES

Dimensions of power pack:
440 x 320 x 320 mm
(17 x 13 x 13")

*Indicative capacities depending on hose and fitting type

OPTIONAL



Maintenance Kit



Quick Change Gun



Aluminium Quick Change Gun



Die Storage Panel



Marking Dies



Die Sets for Brake & Air Conditioning Hoses



Front Die Storage



Battery

V CRIMP 240

FIELD SERVICE & MOBILE WORKSHOP
MOBILE VAN

KEY FEATURES

- Robust design
- Ergonomic micrometer
- High crimping speed
- Radial movement of the dies
- Cylinder protection
- Remote head mounting option possible

TECHNICAL SPECIFICATIONS

CAPACITY*

2wb: 2" max.

4ws: 2" max.

6ws: 1 1/4" max.

CRIMP RANGE

4 - 76 mm (0.157 - 2.992")

CRIMP FORCE

240 t

OPENING WITH DIES

+38 mm (+1.496")

COMPLETE OPENING

118 mm (4.646")

MASTER DIE LENGTH

100 mm (3.937")

STANDARD DIES

14, 16, 18, 20, 22, 24, 27,
30, 33, 36, 39, 42, 45, 48,
51, 57, 63, 66, 70

NOISE LEVEL

72 dB A

MOTOR

2.0 kW

VOLTAGES

12 V

24 V

220/240 V, 3Ph, 50 Hz

380/415 V, 3Ph, 50 Hz

208/240 V, 3Ph, 60 Hz

380/415 V, 3Ph, 60 Hz

DIMENSIONS

650 x 550 x 670 mm

(26 x 22 x 26")

PACKAGING

800 x 600 x 830 mm

(31 x 24 x 33")

NET WEIGHT

118 kg (260 lb)

GROSS WEIGHT

180 kg (397 lb)

*Indicative capacities depending on hose and fitting type

OPTIONAL



Maintenance Kit



Quick Change Gun



Aluminum Quick Change Gun



Die Storage Panel



Marking Dies

Die Sets for Brake
& Air Conditioning
Hoses

Front Die Storage



Battery

V CRIMP 240 L

FIELD SERVICE & MOBILE WORKSHOP
MOBILE VAN

KEY FEATURES

- Robust design
- Ergonomic micrometer
- High crimping speed
- Radial movement of the dies
- Cylinder protection

TECHNICAL SPECIFICATIONS

CAPACITY*

2wb: 2" max.

4ws: 2" max.

6ws: 1 1/4" max.

CRIMP RANGE

4 - 76 mm (0.157 - 2.992")

CRIMP FORCE

240 t

OPENING WITH DIES

+38 mm (+1.496")

COMPLETE OPENING

118 mm (4.646")

MASTER DIE LENGTH

100 mm (3.937")

STANDARD DIES

15, 18, 20, 22, 24, 27, 30, 33,
36, 39, 42, 45, 48, 51, 57,
63, 66, 70

NOISE LEVEL

72 dB A

TECHNICAL FEATURES

Dimensions of power pack:

440 x 320 x 320 mm (17 x 13 x 13")

*Indicative capacities depending on hose and fitting type

MOTOR

2.0 kW

VOLTAGES

12 V

24 V

220/240 V, 3Ph, 50 Hz

380/415 V, 3Ph, 50 Hz

208/240 V, 3Ph, 60 Hz

380/415 V, 3Ph, 60 Hz

DIMENSIONS

320 x 360 x 350 mm

(13 x 13.5 x 14")

PACKAGING

800 x 600 x 830 mm

(31 x 24 x 33")

NET WEIGHT

130 kg (287 lb)

GROSS WEIGHT

180 kg (397 lb)

OPTIONAL



Maintenance Kit

Quick Change
GunAluminium Quick
Change Gun

Die Storage Panel



Marking Dies

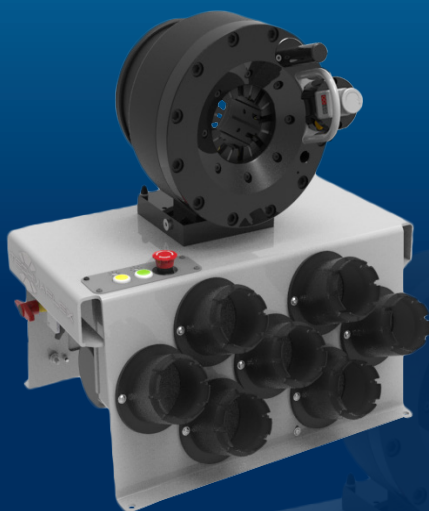
Die Sets for Brake
& Air Conditioning
Hoses

Front Die Storage



Battery

V CRIMP 350

FIELD SERVICE & MOBILE / CONTAINER WORKSHOP
MOBILE VAN

KEY FEATURES

- Robust design
- Large opening
- High crimping force
- Ergonomic micrometer
- High crimping speed
- Radial movement of the dies
- Cylinder protection
- Remote head mounting option possible

TECHNICAL SPECIFICATIONS

CAPACITY*

2wb: 3" max.

4ws: 2" max.

6ws: 2" max.

Industrial: 4"

CRIMP RANGE

4 - 130 mm (0.157 - 5.118")

CRIMP FORCE

350 t

OPENING WITH DIES

+54 mm (+2.125")

COMPLETE OPENING

180 mm (7.086")

MASTER DIE LENGTH

115 mm (4.528")

STANDARD DIES

14, 16, 18, 20, 22, 24, 27,
30, 33, 36, 39, 42, 45, 48,
51, 57, 63, 66, 70, 73, 76

NOISE LEVEL

<65 dB A

MOTOR

2.0 kW

VOLTAGES

12 V

24 V

220/240 V, 3Ph, 50 Hz

380/415 V, 3Ph, 50 Hz

208/240 V, 3Ph, 60 Hz

380/415 V, 3Ph, 60 Hz

DIMENSIONS

650 x 550 x 750 mm

(26 x 22 x 30")

PACKAGING

800 x 600 x 830 mm

(31 x 24 x 33")

NET WEIGHT

210 kg (463 lb)

GROSS WEIGHT

260 kg (573 lb)

SAFETY REMARK

Possible limitations in case
of double elbow fittings

*Indicative capacities depending on hose and fitting type

OPTIONAL



Maintenance Kit

Quick Change
GunAluminium Quick
Change Gun

Die Storage Panel



Marking Dies

Die Sets for Brake
& Air Conditioning
Hoses

Front Die Storage



Battery

P CRIMP 140

ASSEMBLING FOR MASS PRODUCTION
STAND TYPE CRIMP MACHINE, SCS SYSTEM



KEY FEATURES

- Safe Crimp System (SCS) control
- Large production capacity (small/medium bore)
- Low noise level
- Precise
- Robust
- Available with SCE control panel

STANDARD



TECHNICAL SPECIFICATIONS

| CAPACITY* | NOISE LEVEL |
|--|-----------------------|
| 2WB: 2" max. | <69 dB A |
| 4WS: 1 1/4" max. | MOTOR |
| Industrial: 2-1/2" max. | 5.5 kW |
| CRIMP RANGE | VOLTAGES |
| 4 - 70 mm (0.157 - 2.756") | 220/240 V, 3Ph, 50 Hz |
| CRIMP FORCE | 380/415 V, 3Ph, 50 Hz |
| 140 t | 208/240 V, 3Ph, 60 Hz |
| OPENING WITH DIES | DIMENSIONS |
| +45 mm (+1.772") | 890 x 690 x 1380 mm |
| COMPLETE OPENING | (35 x 27 x 54") |
| 125 mm (4.921") | PACKAGING |
| MASTER DIE LENGTH | 1120 x 1020 x 1725 mm |
| 80 mm (3.150") | (44 x 40 x 68") |
| STANDARD DIES | NET WEIGHT |
| 14, 16, 18, 20, 22, 24, 27, 30, 33, 36, 39, 42, 45, 48 | 600 kg (1323 lb) |

*Indicative capacities depending on hose and fitting type

OPTIONAL



P CRIMP 200

ASSEMBLING FOR MASS PRODUCTION
STAND TYPE CRIMP MACHINE, SCS SYSTEM



KEY FEATURES

- Safe Crimp System (SCS) control
- Large production capacity (small/medium bore)
- Low noise level
- Precise
- Robust
- Available with SCE control panel

STANDARD



Quick Change Gun



SCS Safe Crimp System



Mirror



Electrical Footswitch



Die Storage

TECHNICAL SPECIFICATIONS

CAPACITY*

Industrial: 2" max.

4ws: 1 1/2" max.

CRIMP RANGE

4 - 70 mm (0.157 - 2.756")

CRIMP FORCE

200 t

OPENING WITH DIES

+51 mm (+2")

COMPLETE OPENING

131 mm (5.157")

MASTER DIE LENGTH

95 mm (3.740")

STANDARD DIES

14, 16, 18, 20, 22, 24, 27,
30, 33, 36, 39, 42, 45, 48

NOISE LEVEL

<55 dBA

MOTOR

5.5 kW

VOLTAGES

220/240 V, 3Ph, 50 Hz

380/415 V, 3Ph, 50 Hz

208/240 V, 3Ph, 60 Hz

DIMENSIONS

890 x 690 x 1380 mm

(35 x 27 x 54")

PACKAGING

1120 x 1020 x 1725 mm

(44 x 40 x 68")

NET WEIGHT

600 kg (1323 lb)

OPTIONAL

Aluminium Quick
Change GunMechanical
Backstop

Marking Dies

Die Sets for Brake & Air
Conditioning Hoses

Digital Caliper

*Indicative capacities depending on hose and fitting type

P CRIMP 320

ASSEMBLING FOR MASS PRODUCTION
STAND TYPE CRIMP MACHINE

KEY FEATURES

- High crimp force
- Large opening
- Safe Crimp System (SCS) control
- Wide family of dies for industrial hoses
- Robust structure
- Fast and ergonomic
- Low noise level

STANDARD



Quick Change Gun

SCS Safe Crimp System

Mirror

Electrical Footswitch

Die Storage

Pushing panel

TECHNICAL SPECIFICATIONS

CAPACITY*

2wb: 3" max.

4ws: 2" max.

6ws: 2" max.

Industrial: 4" max.

NOISE LEVEL

<65 dB A

MOTOR

5.5 kW / 7.5 kW (Fast Version)

VOLTAGES

220/240 V, 3Ph, 50 Hz

380/415 V, 3Ph, 50 Hz

208/240 V, 3Ph, 60 Hz

380/415 V, 3Ph, 60 Hz

CRIMP RANGE

4 - 130 mm (0.157 - 5.118")

CRIMP FORCE

320 t

OPENING WITH DIES

+80 mm (+3.149")

COMPLETE OPENING

207 mm (8.149")

MASTER DIE LENGTH

100 mm (3.937")

STANDARD DIES

14, 16, 18, 20, 22, 24, 27, 30,
33, 36, 39, 42, 45, 48, 54, 57,
63, 66, 70, 73, 76

DIMENSIONS

1240 x 995 x 1615 mm

(49 x 39 x 64")

PACKAGING

1400 x 1100 x 1960 mm

(55 x 43 x 77")

NET WEIGHT

2000 kg (4409 lb)

GROSS WEIGHT

2300 kg (5071 lb)

*Indicative capacities depending on hose and fitting type

OPTIONAL



Die Storage Panel

Marking Dies

Back View Camera

Aluminium Quick Change Gun

Mechanical Backstop

Side Table

Die Sets for Brake & Air Conditioning Hoses

Digital Caliper

Barcode Reader

P CRIMP 480

ASSEMBLING FOR MASS PRODUCTION
STAND TYPE CRIMP MACHINE

KEY FEATURES

- High crimp force
- Large opening
- Safe Crimp System (SCS) control
- Wide family of dies for industrial hoses
- Long master dies
- Robust
- Low noise level

STANDARD



TECHNICAL SPECIFICATIONS

CAPACITY*

6ws: 3" max.

Industrial: 4" max.

CRIMP RANGE

4 - 160 mm (0.157 - 6.299")

CRIMP FORCE

480 t

OPENING WITH DIES

+85 mm (+3.346")

COMPLETE OPENING

212 mm (8.346")

MASTER DIE LENGTH

125 mm (4.921")

STANDARD DIES

14, 16, 18, 20, 22, 24, 27, 30,
33, 36, 39, 42, 45, 48, 51, 57,
63, 66, 70, 73, 76

NOISE LEVEL

<65 dB A

MOTOR

5.5 kW

VOLTAGES

220/240 V, 3Ph, 50 Hz

380/415 V, 3Ph, 50 Hz

208/240 V, 3Ph, 60 Hz

380/415 V, 3Ph, 60 Hz

DIMENSIONS

1300 x 900 x 1700 mm

(51 x 35 x 67")

PACKAGING

1400 x 1100 x 1960 mm

(55 x 43 x 77")

NET WEIGHT

2200 kg (4850 lb)

GROSS WEIGHT

2430 kg (5357 lb)

*Indicative capacities depending on hose and fitting type

OPTIONAL



XL CRIMP 800

ASSEMBLING FOR LARGE BORE HOSES
STAND TYPE CRIMP MACHINE

KEY FEATURES

Designed for heavy duty large bore hydraulic hoses

High power and speed

Ergonomically designed for large bore hoses

Safe Crimp System (SCS) for maximum reliability during the crimping process

Large opening up to 8"

Long master dies

Very high crimping force

STANDARD



Electrical Footswitch



Hose Support



SCS Safe Crimp System



Back View Camera

TECHNICAL SPECIFICATIONS

CAPACITY*

4ws: 4" max.

6ws: 3" max.

Industrial: 6"

CRIMP RANGE

4 - 230 mm (0.157 - 9.055")

CRIMP FORCE

800 t

OPENING WITH DIES

+100 mm (+3.937")

COMPLETE OPENING

347 mm (13.661")

MASTER DIE LENGTH

180 mm (7.087")

NOISE LEVEL

< 70 dB A

MOTOR

7.5 kW

VOLTAGES

380/415 V, 3Ph, 50 Hz

DIMENSIONS

1400 x 1400 x 2060 mm

(55 x 55 x 81")

NET WEIGHT

4300 kg (9480 lb)

GROSS WEIGHT

5000 kg (11023 lb)

TECHNICAL FEATURES

-Machine platform equipped with rollers to support the hose at working height (1100 mm) in order to handle large bore hoses more easily
-Supplied as standard: Intermediate dies 250/130 and 130/80

*Indicative capacities depending on hose and fitting type

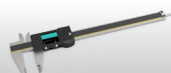
OPTIONAL



Quick Change Gun



Die Storage Panel



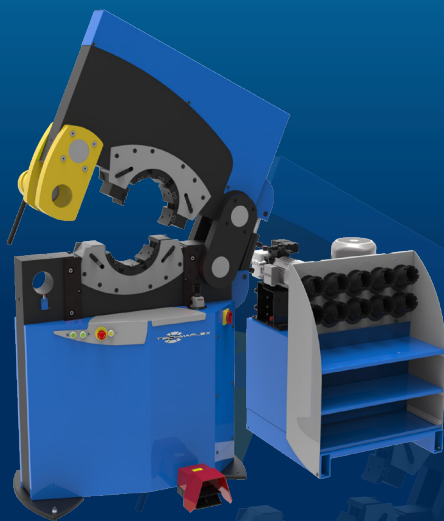
Digital Caliper

XL CRIMP 320

PESO 320
XXL WORKSHOP

KEY FEATURES

- Unique on market
- Lateral opening
- No limit on end connection diameter
- Easy to use
- Separated power pack
- Integrated safety system



STANDARD



Electrical Footswitch



Die Storage

TECHNICAL SPECIFICATIONS

CAPACITY*

Industrial: 6"

CRIMP RANGE

4 - 230 mm (0.157 - 9.055")

CRIMP FORCE

320 t

OPENING WITH DIES

+55 mm (+2.165")

COMPLETE OPENING

260 mm (10.236")

LATERAL OPENING

247 mm (9.724")

MASTER DIE LENGTH

125 mm (4.921")

MOTOR

5.5 kW

VOLTAGES

230 V, 3 Ph

400 V, 3 Ph

MACHINE DIMENSIONS

1265 x 680 x 1800 mm

(50 x 27 x 71")

POWER PACK DIMENSIONS

890 x 800 x 1050 mm

(35 x 31 x 41")

MACHINE WEIGHT

1700 kg (3748 lb)

POWER PACK WEIGHT

400 kg (882 lb)

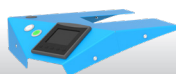
TECHNICAL FEATURES

-Die sizes available upon request

OPTIONAL



Digital Caliper



SCE

*Indicative capacities depending on hose and fitting type

XL CRIMP 400

PE 280
XXL WORKSHOP



KEY FEATURES

- High crimping force
- Ergonomic operation
- Economic solution
- Large opening
- Robust
- Easy set up
- Versatile
- Adjustable crimping working position

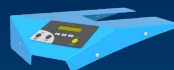
STANDARD



Remote Control

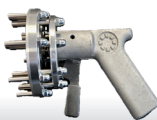


Ergonomic Micrometer



SC

OPTIONAL



Aluminium Quick
Change Gun

TECHNICAL SPECIFICATIONS

CAPACITY*

Industrial: 6"

CRIMP RANGE

4 - 210 mm (0.157 - 8.268")

CRIMP FORCE

400 t

OPENING WITH DIES

+50 mm (+1.969")

COMPLETE OPENING

285 mm (11.221")

MASTER DIE LENGTH

150 mm (5.906")

MOTOR

5.5 kW

VOLTAGES

230 V, 3 Ph

400 V, 3 Ph

DIMENSIONS

1100 x 900 x 1550 mm

(43 x 35 x 61")

WEIGHT

750 kg (165 lbs)

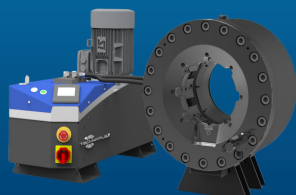
TECHNICAL FEATURES

-Die sizes available upon
request

*Indicative capacities depending on hose and fitting type

S CRIMP 450-200/P

XXL WORKSHOP



Version with remote head


Production version
with "silent" central unit

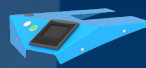
KEY FEATURES

- High crimp force (450 tonnes)
- Large opening
- Wide family of dies for industrial hoses
- Long master dies
- Robust & Ergonomic
- Metallic guard for the set stop
- Separated crimping head allowing flexible workshop arrangements
- Production option:
 - "silent" central unit with 50 L tank
 - Table with racks EVO
 - 3 control panels available

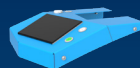
CONTROL OPTIONS AVAILABLE ON REQUEST



SC



SCE



SCS

TECHNICAL SPECIFICATIONS

CAPACITY*

Industrial: 4" & 6"

CRIMP RANGE

4 - 180 mm (0.157 - 7.087")

CRIMP FORCE

450 t

OPENING WITH DIES**

+70 mm (+2.755")

MASTER-DIES OPENING***

270 mm (10.629")

MASTER DIE LENGTH

125 mm (4.921")

STANDARD DIES

14, 16, 18, 20, 22, 24, 27, 30,
33, 36, 39, 42, 45, 48, 51, 57,
63, 66, 70, 73, 76;
Dies up to 180 mm available
on request

*Indicative capacities depending on hose and fitting type

** working stroke 24 mm

*** Full passage 230 mm

MOTOR

5.5 kW

VOLTAGES

220/240 V, 3Ph, 50 Hz

380/415 V, 3Ph, 50 Hz

208/240 V, 3Ph, 60 Hz

380/415 V, 3Ph, 60 Hz

DIMENSIONS

830 x 775 x 1450 mm
(33 x 31 x 57")

PACKAGING

1120 x 1020 x 1770 mm

(44 x 40 x 70")

NET WEIGHT

450 kg (992 lb)

750 kg (pro version)

OPTIONAL



Die Storage Panel



Die Storage Table EVO



Quick Change Gun


Aluminium Quick
Change Gun


Electrical Footswitch



Marking Dies


Die Sets for Brake & Air
Conditioning Hoses


Digital Caliper

XL CRIMP 450

8" HOSE CRIMPER

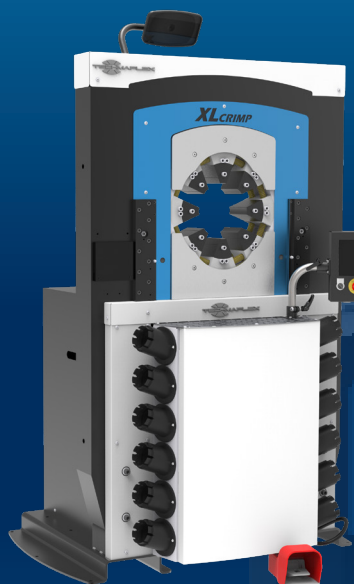
KEY FEATURES

High crimping force

Large opening for hoses up to 8" and flanges up to ANSI 150 PSI

Diameter adjustment is controlled by SCS

Possibility to install eccentric and/or deported dies



STANDARD



EG



SCS Safe Crimp System



Mirror



Electrical Footswitch



Die Storage



Pushing panel

TECHNICAL SPECIFICATIONS

CAPACITY*

Industrial: 8"

MAX CRIMPING DIAMETER

300 mm (11.811")
(with special dies)

CRIMP FORCE

450 t

OPENING WITH DIES

+ 130 mm (5.118")

COMPLETE OPENING

360 mm (14.173")

MAXIMUM DIE LENGTH

130 mm (5.118")

GROSS WEIGHT

2900 kg (6393 lb)

TECHNICAL FEATURES

Die sizes available upon request

OPTIONAL



Die Storage Panel



Marking Dies



Back View Camera



Digital Caliper



Aluminium Quick Change Gun



Mechanical Backstop



Side Table



Die Sets for Brake & Air Conditioning Hoses



Simple or double foot pedal



Barcode Reader

*Indicative capacities depending on hose and fitting type

XL CRIMP 550/XL CRIMP 550-16

XXL WORKSHOP



KEY FEATURES

- Very large opening
- Fixed bottom die
- Long dies available
- High crimping force
- Symmetric machine
- Low working height
- Ergonomic
- Safe Crimp System (SCS)
- Step crimping capability with SCS

STANDARD



SCS Safe Crimp System



Die Storage

TECHNICAL SPECIFICATIONS

| | XL CRIMP 550 | XL CRIMP 550-16 |
|-----------------------|--|--|
| CAPACITY* | Industrial: 12" | Industrial: 16" |
| CRIMP FORCE | 550 t | 550 t |
| COMPLETE OPENING | 490 mm (19.291") | 660 mm (25.984") |
| OPENING WITH DIES | +130 mm (+5.118") | +160 mm (6.299") |
| MASTER DIE LENGTH | 200 mm (7.874") | 200 mm (7.874") |
| MOTOR | 5.5 kW | 5.5 kW |
| VOLTAGES | 230 V, 3 Ph 400 V, 4 Ph | 230 V, 3 Ph 400 V, 4 Ph |
| MACHINE DIMENSIONS | 1300 x 1050 x 2230 mm (35 x 41 x 88") | 1450 x 1100 x 2300 mm (57 x 43 x 91") |
| POWER PACK DIMENSIONS | 800 x 790 x 1650 mm (31 x 31 x 65") | 800 x 790 x 1650 mm (31 x 31 x 65") |
| MACHINE WEIGHT | 4000 kg (8818 lb) | 4300 kg (9480 lb) |
| POWER PACK WEIGHT | 500 kg (1102 lb) | 500 kg (1102 lb) |
| TECHNICAL FEATURES | Die sizes available upon request | |

*Indicative capacities depending on hose and fitting type

OPTIONAL



Back view camera

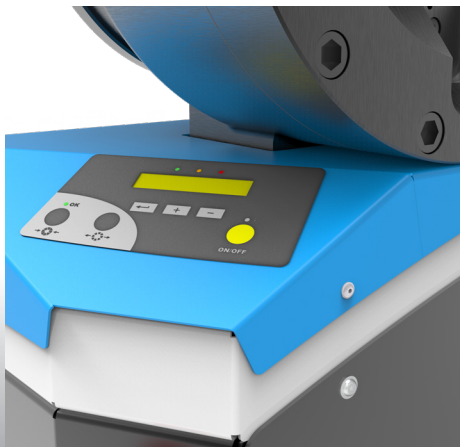
ACCESSORIES AND TOOLS

SAFE CRIMP (SC) SMART CONTROL PANEL

A basic smart control panel, which includes maintenance functions essential for keeping the machine in good condition.

Maintenance functions include:

- **2 Counters:** 1 daily counter and 1 machine cycle counter
- **3 LED Indicator Lights:** 1 for daily maintenance, 1 for advanced maintenance and 1 for expert maintenance
- **Semi-automatic function:** The semi-automatic opening is ideal for serial assemblies as it can be adjusted specifically to allow the fitting to pass through the dies with minimal clearance, saving energy by reducing the cycle time.

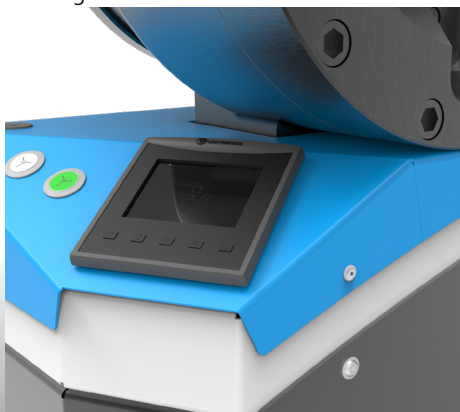


SAFE CRIMP ELECTRICAL PANEL (SCE)

A modern touch screen with electronic buttons, which includes maintenance functions essential for keeping the machine in good condition.

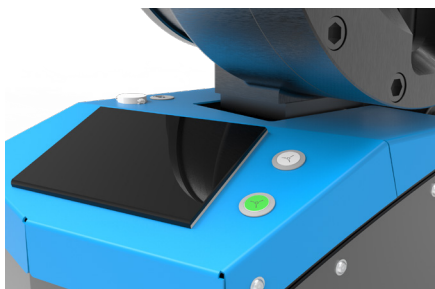
Maintenance functions include:

- **Functions of the Safe Crimp Panel**
- **Electronic micrometer** with the ability to save up to 75 configurations and automatic die selection. Recording of 35 die-sets
- **Caliper option** for automatic correction of the crimping diameter



ACCESSORIES AND TOOLS

SAFE CRIMP SYSTEM (SCS)



Benefits of Safe Crimp System control for hose assembly activity:

Friendly and easy setting of crimping parameters including:

- › Pre-set of crimp Ø calibration to compensate ferrule elastic rebound
- › Reminder of dies to be used
- › Easy automatic opening setting

Storage of recurrent and customised crimp recipes: favourite crimp assemblies:

- › Short cuts for faster setting
- › No crimp Ø re-adjusting
- › Possibility to download your customised recipes by USB port and save on separate computer (CSV file)

Production counter for batch quantity control:

- › Quality monitoring through automatic crimp control (Available only production and industrial machines)
- › Continuous measurement of crimping pressure with real time display (Available on screen production and industrial machines / Option on bench machines screen)
- › Countdown of crimps to be performed, monitored according to the preset pressure range (Available on production and industrial machine screens / Option on bench machine screens)

Operator identification
(Log in / log out)

Maintenance Warnings



S TEST 2000 L

TEST BENCH, PROOF PRESSURE & CERTIFY
STAND TYPE MACHINE

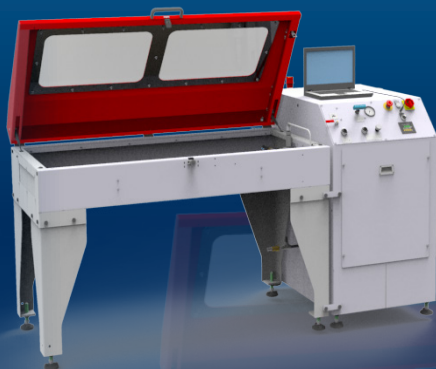
KEY FEATURES

Easy to use and robust

Safe: Steel Compartment,
polycarbonate transparent window
and metal mesh

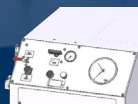
Large testing area for up to 6 hoses

Variable pressure up to 2000 bar



Model shown L (small tank)

AVAILABLE VERSIONS



Power Unit M



Power Unit E

TECHNICAL SPECIFICATIONS

INDICATIVE CAPACITY

3/16" - 2"

HOSE CONNECTION

6 maximum

AIR CONSUMPTION

1000 L/min

OPENING/CLOSING TIME

10-14 seconds

MAX PRESSURE

2000 bar (29000 psi)

INNER TANK CAPACITY

1700 x 790 x 200 mm
(67 x 31 x 8")

DIMENSIONS (PANEL)

700 x 1200 x 1220 mm
(28 x 47 x 48")

PACKAGING (TANK)

1600 x 1200 x 1280 mm
(63 x 47 x 50")

PACKAGING (PANEL)

1000 x 1200 x 1280 mm
(39 x 47 x 50")

NET WEIGHT

430 kg (948 lb)

GROSS WEIGHT

500 kg (1102 lb)

TECHNICAL FEATURES

- Minimum compressed air
input 8.5 bar (123 psi)

FEATURES AND OPTIONS

DISPLAY FEATURES

- M** Gauge measurement display
- E** Numerical measurement display with 4" touch screen and ethernet connection for computer

FURTHER OPTIONS

- Autonomous filling pump
- Air blowing system for both models

S TEST 2000 XL

TEST BENCH, PROOF PRESSURE & CERTIFY
STAND TYPE MACHINE

Model shown XL ISD

KEY FEATURES

Easy to use and robust

Safe: Steel Compartment, polycarbonate transparent window and metal mesh

Large testing area for up to 6 hoses

Variable pressure up to 2000 bar

TECHNICAL SPECIFICATIONS

INDICATIVE CAPACITY

3/16" - 2"

HOSE CONNECTION

6 maximum

AIR CONSUMPTION

1000 L/min

OPENING/CLOSING TIME

10-14 seconds

MAX PRESSURE

2000 bar (29000 psi)

INNER TANK CAPACITY

1400 x 900 x 600 mm
(55 x 35 x 24")

DIMENSIONS (PANEL)

700 x 1200 x 1220 mm
(28 x 47 x 48")

PACKAGING (TANK)

1600 x 1200 x 1280 mm
(63 x 47 x 50")

PACKAGING (PANEL)

1000 x 1200 x 1280 mm
(39 x 47 x 50")

NET WEIGHT

500 kg (1102 lb)

GROSS WEIGHT

600 kg (1323 lb)

TECHNICAL FEATURES

- Minimum compressed air input 8.5 bar (123 psi)
- Minimum test pressure 250 bar (3626 psi), with low pressure option 40 bar (725 psi) (only for XL ISD)

FEATURES AND OPTIONS

STANDARD OPTIONS

XL ISD:

- Light included
- 10" touch screen panel
- Printer

XL E:

- Light included
- Numerical measurement display with 4" touch screen and ethernet connection for computer report.

FURTHER OPTIONS

- Autonomous filling pump
- Air blowing system for both models

TUBE APPLICATIONS



POSSIBLE APPLICATIONS

ECOVERSION - after-market manufacturers

PROVERSION - OEM manufacturers



Tube stacking



Tube reduction
before drawing



Assembling



Geometrical
deformation



Calibration



Insulator

Activities:

Greenhouse, scaffolding,
urban furniture, playground
equipment, hand rails,
mechanical construction,
furniture, etc.



Cement Rods

AVAILABLE OPTIONS



Mechanical Set
Stop*



Crimp Head



Special Hydraulic
Power Pack



Oil Cooling
System



Foot Pedal



Central Greasing
System



Computer**

*Accuracy and repeatability optimized

**Pressure and diameters controls, data storage to save recipes,
assembly by step, alert maintenance

AUTOMOTIVE APPLICATIONS



POSSIBLE APPLICATIONS



Air Spring



Part calibration - shock absorbers, pulleys



A/C, brake hoses, control cables



Automotive pipe



Airbag inflators

AVAILABLE OPTIONS



Mechanical Set Stop



Crimp Head



Special Hydraulic Power Pack



Foot Pedal



Central Greasing System



Oil Cooling System



Computer**

*Accuracy and repeatability optimized

**Pressure and diameters controls, data storage to save recipes, assembly by step, alert maintenance



www.techmaflex.com

Copyright 2022 Techmaflex. All rights reserved.
All product names are either trademarks or registered trademarks of
Techmaflex unless otherwise stated



Manuli Hydraulics France SAS - Techmaflex
7 Chemin des Fontenelles - 44140 LE BIGNON, FRANCE
Tel. +33 (0)2 40 03 05 01
Email: info@techmaflex.com