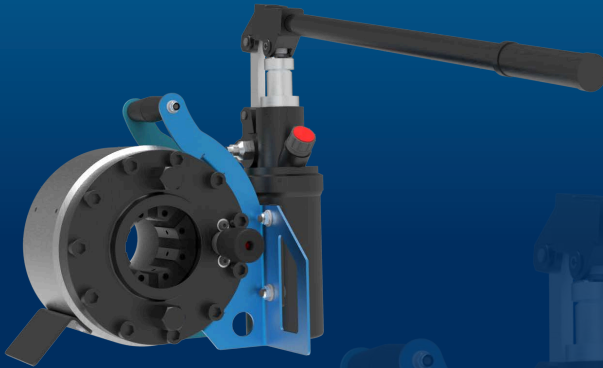


H CRIMP 80 EVO

FIELD SERVICE & MOBILE WORKSHOP
HAND PUMP, PORTABLE

KEY FEATURES

- Compact
- Lightweight
- Easy to use
- Balanced design
- Dual stage pump



TECHNICAL SPECIFICATIONS

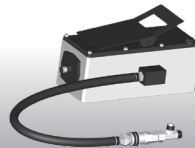
CAPACITY*	DIMENSIONS
2wb: 1" max.	360 x 280 x 390 mm
4ws: 3/2" max.	(14 x 11 x 15")
CRIMP RANGE	PACKAGING
6 - 43 mm (0.236 - 1.693")	800 x 600 x 830 mm
CRIMP FORCE	(31 x 24 x 33")
80 t	NET WEIGHT
OPENING WITH DIES	28 kg (62 lb)
+20 mm (+0.787")	GROSS WEIGHT
COMPLETE OPENING	41 kg (90 lb)
59 mm (2.323")	TECHNICAL FEATURES
MASTER DIE LENGTH	Hand pump: 5000 psi
56 mm (2.205")	(double speed)
STANDARD DIES	
16, 18, 20, 22, 24, 27, 30**	

*Indicative capacities depending on hose and fitting type
** Master-dies used as dies set N°39

OPTIONAL



Maintenance Kits



Hydro-pneumatic Pump