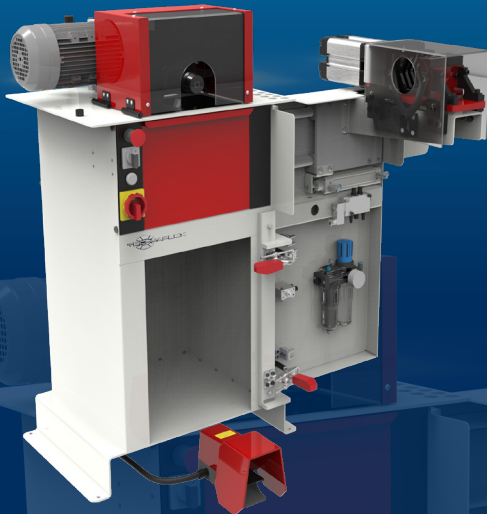


P SKIVE 300

STARTER & PROFESSIONAL WORKSHOP STAND TYPE CUTTING MACHINE

KEY FEATURES

- Plug'n skive system
- Large dust collector
- Robust & easily adjustable knife for quick and easy changeover
- Suitable for high volume production
- 2-way rotation
- Speed variator for single-phase version



Model shown: OEM version with Pneumatic Clamping system option

TECHNICAL SPECIFICATIONS

CAPACITY

- 2wb: 2" max.
- 4ws: 2" max.
- 6ws: 3" max. *

ROTATION SPEED

300 rpm

MOTOR

0.9 kW

VOLTAGES

- 220/240 V, 3Ph, 50 Hz
- 380/415 V, 3Ph, 50 Hz
- 208/240 V, 3Ph, 60 Hz
- 380/415 V, 3Ph, 60 Hz

DIMENSIONS

675 x 550 x 1130 mm
(27 x 22 x 44")

*with clamping system

PACKAGING

800 x 600 x 1200 mm
(32 x 24 x 47")

NET WEIGHT

100 kg (220 lb)

GROSS WEIGHT

160 kg (353 lb)

TECHNICAL FEATURES

Options available:
hose clamping system
(recommended for hoses
from 2")

Tools available (to be
ordered separately):
ESA, IS, ESP1, ESP2

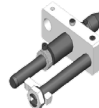
OPTIONAL



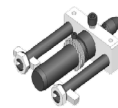
Tool Kit IS



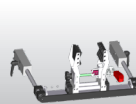
Tool kit ESA



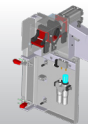
Tool Kit ESP 1



Tool Kit ESP 2



Manual Hose Clamping System



Pneumatic Hose Clamping System



Speed Regulator