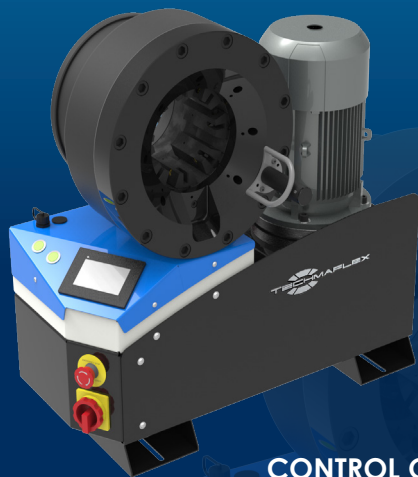


# S CRIMP 350 EVO / S CRIMP 350 L

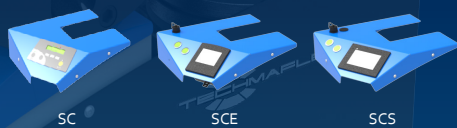
FULL SERVICE WORKSHOP  
BENCHTOP; VERY HIGH CRIMP FORCE



## KEY FEATURES

- Crimp force up to 350 tonnes for hoses up to 3"
- Easy to use and robust
- Automatic maintenance alerts
- Groove for 90° long drop fittings
- Also available as S CRIMP 350 L with 4.0 kW motor
- Model shown equipped with SCS control panel

## CONTROL OPTIONS AVAILABLE ON REQUEST



## TECHNICAL SPECIFICATIONS

<b>CAPACITY*</b>	<b>NOISE LEVEL</b>
2wb: 3" max. Textile / Suction Hose: 4" max. 4ws: 2" max. 6ws: 2" max.	<70 dB A
<b>CRIMP RANGE</b>	<b>MOTOR</b>
4 - 130 mm (0.157 - 5.118")	5.5 kW / 4 kW
<b>CRIMP FORCE</b>	<b>VOLTAGES</b>
350 t	220/240 V, 3Ph, 50 Hz 380/415 V, 3Ph, 50 Hz 208/240 V, 3Ph, 60 Hz 380/415 V, 3Ph, 60 Hz
<b>OPENING WITH DIES</b>	<b>DIMENSIONS</b>
+54 mm (+2.125")	765 x 400 x 750 mm (30 x 16 x 30")
<b>COMPLETE OPENING</b>	<b>NET WEIGHT</b>
180 mm (7.086")	262 kg (578 lb)
<b>MASTER DIE LENGTH</b>	<b>TECHNICAL FEATURES</b>
115 mm (4.523")	-Automatic maintenance alerts -Cylinder protection against dust - durable design -Also available as S CRIMP 350 EVO L with 4.0 kW Motor
<b>STANDARD DIES</b>	
14, 16, 18, 20, 22, 24, 27, 30, 33, 36, 39, 42, 45, 48, 51, 57, 63, 66, 70, 73, 76	

\*Indicative capacities depending on hose and fitting type

## OPTIONAL

- Maintenance Kit
- Electrical Footswitch
- Die Storage Panel
- Die Storage Table
- Die Storage Table EVO
- Quick Change Gun
- Aluminium Quick Change Gun
- Mechanical Backstop
- Die Sets for Brake & Air Conditioning Hoses
- Marking Dies
- Digital caliper
- Die Storage Panel EVO