

# S CRIMP 137 EVO R

## MAINTENANCE WORKSHOP VERTICAL BENCHTOP



### KEY FEATURES

- Ergonomically positioned adjustable head
- Axis of the head situated perpendicular to the operator
- Compact

### TECHNICAL SPECIFICATIONS

**CAPACITY\***

2wb / 4ws: 1 3/4" max.  
Industrial: 1 1/2" max.

**CRIMP RANGE**

4- 70 mm (0.157 - 2.756")

**CRIMP FORCE**

137 t

**OPENING WITH DIES**

+28 mm (+1.102")

**COMPLETE OPENING**

100 mm (3.937")

**MASTER DIE LENGTH**

75 mm (2.953")

**STANDARD DIES**

14, 16, 18, 20, 22, 24, 27, 30,  
33, 36, 39, 42, 45, 48, 51

**NOISE LEVEL**

70 dB A

\*Indicative capacities depending on hose and fitting type

**MOTOR**

1.5 kW (110V)  
2.2 kW (230V)

**VOLTAGES**

110V, 1Ph, 60 Hz  
220/240V, 1 Ph, 50 Hz  
380/415V, 3 Ph + N, 50 Hz  
+12/24V

Other voltages available on request

**DIMENSIONS**

360 x 530 x 620 mm  
(14 x 21 x 25")

**NET WEIGHT**

85 kg (187 lb)

**GROSS WEIGHT**

89 kg (196 lb)

### OPTIONAL



Maintenance Kit



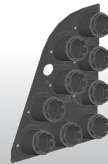
Die Storage Panel



Aluminium Quick Change Gun



Quick Change Gun



Die Storage Panel EVO R