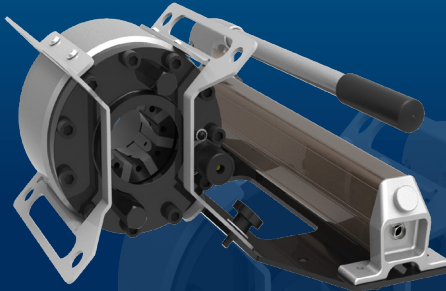


H CRIMP 110

FIELD SERVICE & MOBILE WORKSHOP
HAND PUMP, PORTABLE

KEY FEATURES

- Flexible
- Portable
- Robust (protected narrow head)
- Multi-positioning (with removable plate)



TECHNICAL SPECIFICATIONS

CAPACITY*

2wb: 1" max.

4ws: 1" max.

CRIMP RANGE

6 - 43 mm (0.236 - 1.693")

CRIMP FORCE

110 t

OPENING WITH DIES

+20 mm (+0.787")

COMPLETE OPENING

59 mm (2.323")

MASTER DIE LENGTH

60 mm (2.362")

STANDARD DIES

16, 18, 20, 22, 24, 27, 30

DIMENSIONS

540 x 400 x 225 mm

(21 x 16 x 9")

PACKAGING

800 x 600 x 830 mm

(31 x 24 x 33")

NET WEIGHT

28 kg (62 lb)

WEIGHT (HEAD ONLY)

21 kg (46 lbs)

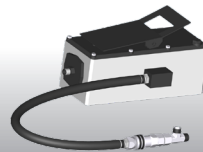
*Indicative capacities depending on hose and fitting type

** Master-dies used as dies set N°39

OPTIONAL



Maintenance Kits



Hydro-pneumatic
Pump