

SMOKE EXTRACTOR 200

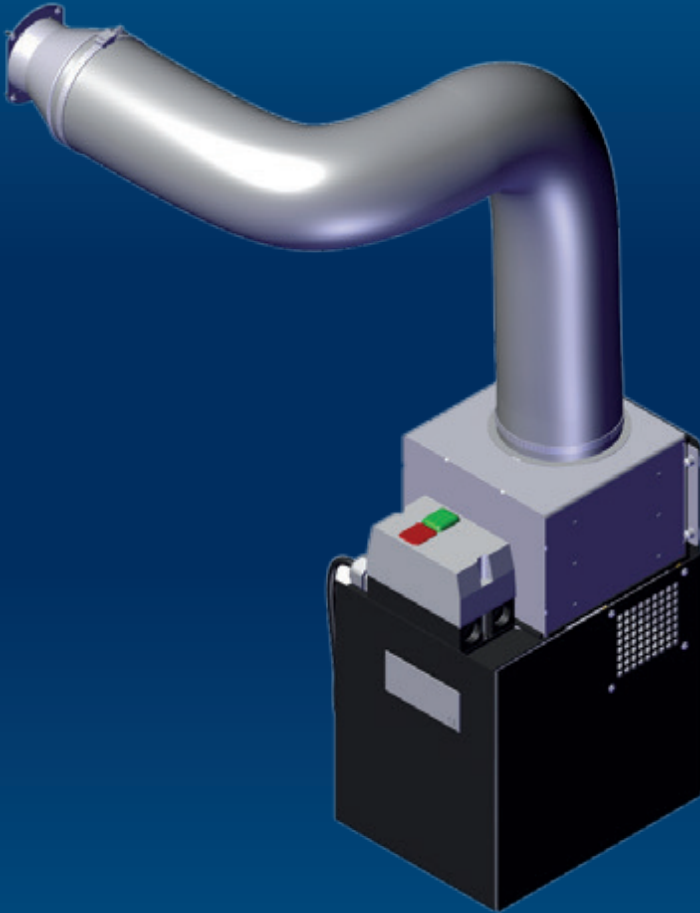
STARTER & PROFESSIONAL WORKSHOP

KEY FEATURES

High flow power
Stable working pressure
Compact and easy installation

Metallic pre-filter MTG
Filter PLG: G4 class
Filter F7: G4 class

Suitable for S CUT 22, S CUT 30 E and
S CUT 30 L



TECHNICAL SPECIFICATIONS

WORKING FLOW

200m³/H

NOISE LEVEL

<55dB A

MOTOR

0.165 kW

WORKING PRESSURE

365 Pa

VOLTAGES

220/240 V, 1Ph, 50Hz

MOTOR FAN FLOW

380 m³/H

DIMENSIONS

300 x 245 x 436 mm

MOTOR FAN PRESSURE

419 Pa

NET WEIGHT

40 kg

IP CLASS

55

FILTER SIZE

200 x 200 mm

NUMBER OF FILTER

3