

QUALITY



INDUSTRIAL  
HYDRAULIC  
RELIABILITY



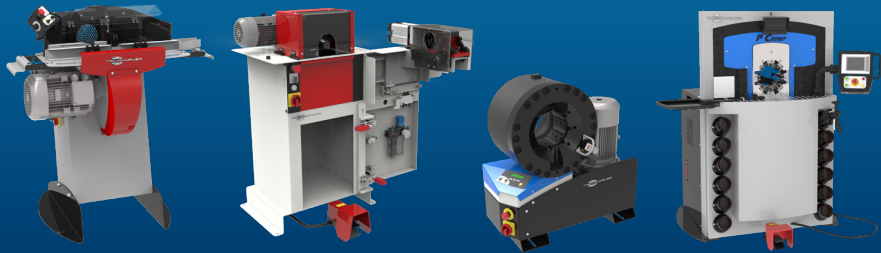
INTEGRATED SOLUTIONS



ASSEMBLY MACHINES







## INTRODUCTION

From being founded in 1987, Techmaflex has become known for the quality and reliability of its benchtop equipment and crimping solutions. Today, Techmaflex is a leader in Europe on benchtop crimping and its supporting equipment range. Techmaflex has grown globally with an established equipment range for portable equipment, benchtop equipment, OEM level and Industrial hose applications. Techmaflex has worked closely with a hose and fitting manufacturer to ensure the equipment meets the toughest demands of the hose industry. This alliance has allowed Techmaflex to design machines perfectly suited for hose assemblers in all industries.

Now established with offices in North America, Asia, Russia, and manufacturing in Europe, Techmaflex has established a global network to support our customers with prompt service and support for all equipment.

Techmaflex continues to innovate in order to serve the expanding market with reliable, hard working equipment and unbeatable service. When you decide on your next line of equipment, look for the "Original Techmaflex" Stamp to ensure you have the best so you can make the best.

All of Techmaflex's assembly machines undergo a rigorous product development process and are subject to extensive testing in both laboratory and field environments.

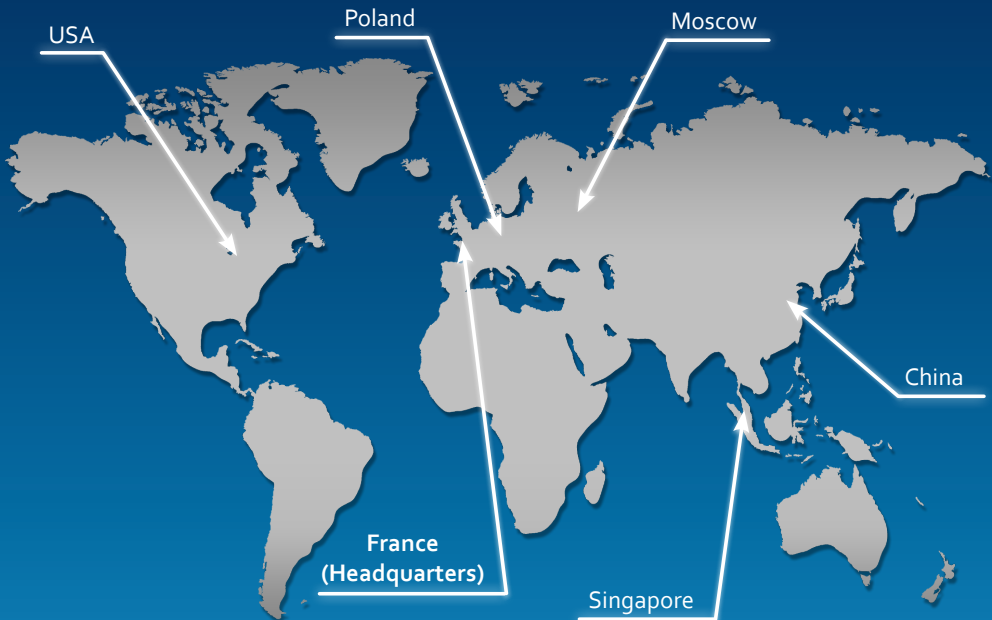
The following index offers a guideline to aid selection of the proper machine with reference to the applications and performance requested.

Special machines (not included in this catalogue) are available upon request, as well as original spare parts.

---

## CONTENTS

Cutting Machines.....	2
Skiving Machines.....	10
Insert Pushing Machines.....	15
Marking Machines.....	17
Complementary Products.....	18
Crimping Machines.....	20
Test Benches.....	46
Industrial Machines.....	48



## FIELD SERVICE & MOBILE WORKSHOP 12V/24V

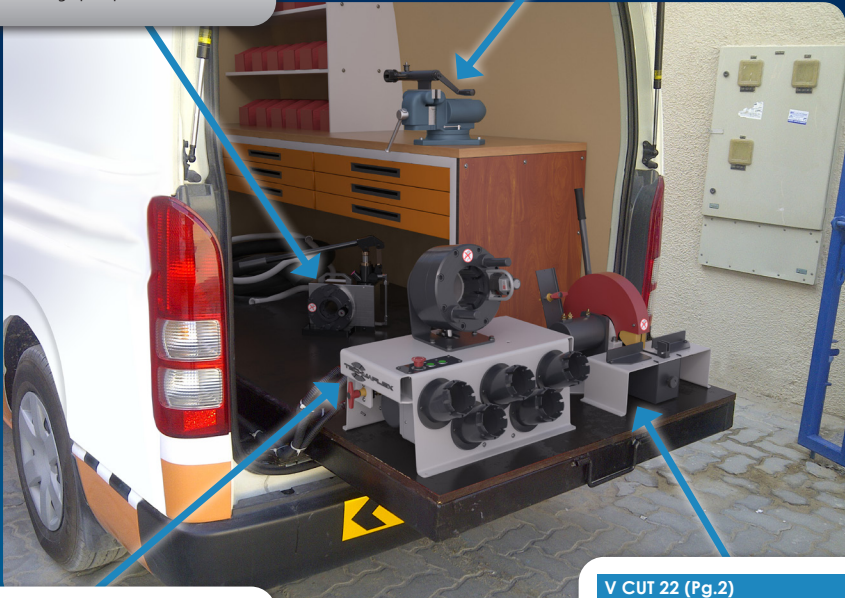
A compact and robust line up to 2", perfect for on-site repair. The hand crimper, H CRIMP 80, offers accessibility to all sites. A complete 12V line delivers hose assembly quality equal to the one obtained in a workshop.

### H CRIMP 80 (Pg.20)

Capacity: 1" 2 WB  
Compact  
Lightweight  
Easy to use  
Balanced design  
Dual stage pump

### H SKIVE (Pg.10)

Capacity: 2"  
Economic  
Simple  
Compact  
Robust  
Plug'n skive system



### V CRIMP 137 (Pg.29)

Capacity: 1 3/4" 4WS  
Robust and compact design  
Lightweight  
High crimping speed  
Suitable also for 90° elbow fittings  
Cylinder protection  
Remote head mounting option possible

### V CUT 22 (Pg.2)

Capacity: 1 3/4" 4WS  
Smooth bending system  
90° cut  
Clean cut  
Scalloped blade  
Dust collector included  
Multiple voltage options

## EXPERT SERVICE LINE

A result of our collaboration with OEM assemblers and hose manufacturers, our expert workshop combines power, reliability, speed, openness and comfort. Techmaflex is now the most innovative manufacturer in machines dedicated to OEM, providing (for instance) the Safe Crimp System which guarantees a constant control of hose assemblies.

### P CUT 90 (Pg.8)

Capacity: 3" 6WS  
 Very powerful  
 Heavy duty for difficult cuts  
 Hydraulic bending  
 Brake motor  
 Electronic soft start

### P SKIVE 300 (Pg.12)

Capacity: 3" 6WS  
 Plug'n skive system  
 Large dust collector  
 Robust & easily adjustable knife for quick and easy changeover  
 Suitable for high volume production  
 2-way rotation



### S PUSH 1500 (Pg.15)

Capacity: all hydraulic hoses from 3/4" up to 2" Interlock  
 Compact  
 Sturdy  
 Powerful  
 Hydro pneumatic power pack

### P CRIMP 480 (Pg.37)

Capacity: 6" WS  
 High crimp force  
 Large opening  
 Safe Crimp System (SCS) control  
 Wide family of dies for industrial hoses  
 Long master dies  
 Robust  
 Low noise level  
 Easy die set-up with ergonomic gun

## XXL WORKSHOP

A workshop developed on a complete range of Industrial crimpers combining power, openness, ergonomics and solutions for handling large diameters. This workshop increases your potential of opportunities. It allows you to prospect many and various markets and thus amortize your investment quickly. Our knowledge of the activity constraints led us to offer ergonomic solutions adapted to the handling of large diameters.



### XL CRIMP 800 (Pg.38)

- Capacity: 4" 4WS / 3" 6WS / 8" Industrial
- Designed for heavy duty large bore hydraulic hoses
- High power and speed
- Ergonomically designed for large bore hoses
- Safe Crimp System (SCS) for maximum reliability during the crimping process
- Large opening up to 8"
- Long master dies
- Very high crimping force

## CRIMPING MACHINES EVO RANGE

PG. 23-27

Techmaflex is always on the lookout for ways to improve both the efficiency and the quality of new and existing production operations.

As a market leader in assembly machines, we wanted to offer new crimping machines to improve the operator's comfort, giving more flexibility when assembling hoses. This led to the creation of the new EVO crimping machines.

These machines combine the robustness required for harsh environments with the reliability needed for busy workshops. Their compact and ergonomic design, along with the ease of set up and maintenance, make them suitable for a variety of applications.

This extensive range is highly adaptable, with various options available allowing users to customise their machine according to their specific needs.



- Extensive range for both industrial and hydraulic hoses.

- 137, 240, 350 and 420 tonnes variants
- From 3/16 up to 4" hose diameter
- 4 kW or 5,5 kW motor for 3Ph



- SC panel - Smart Control panel. Daily counter. Semi-automatic opening.

- SCE panel - electronic micrometer with the ability to save up to 25 configuration
- Caliper connected and numerical display of the crimping range on SCE
- SCS panel - Safe Crimp System



- Compact and ergonomic design
- Easy set up

- Various options available depending on our customers' needs and workshops



- Robust
- Ease of maintenance (foam pads and dust collector)

- Compatibility with all tensions (different frequencies)



# OUR PRODUCTS

---

# S CUT 22 / V CUT 22

STARTER WORKSHOP  
BENCHTOP

CUTTING  
MACHINES  
2



## KEY FEATURES

- Smooth bending system
- 90° cut
- Clean cut
- Scalloped blade
- Dust collector included
- Multiple voltage options

## STANDARD



Scalloped Blade

Dust Collector

## TECHNICAL SPECIFICATIONS

<b>CAPACITY</b>	<b>DIMENSIONS</b>
2wb: 1¼" max.	630 x 485 x 650 mm
4ws: 1¼" max.	(25 x 19 x 26 ")
<b>ROTATION SPEED</b>	<b>PACKAGING</b>
3000 rpm	800 x 600 x 830 mm
<b>SCALLOPED BLADE DIAMETER</b>	<b>NET WEIGHT</b>
254 mm (10") included	(31 x 24 x 33")
<b>MAX HOSE OD.</b>	<b>GROSS WEIGHT</b>
50 mm (1.969")	42 kg (93 lb)
<b>MOTOR</b>	<b>TECHNICAL FEATURES</b>
2.2 kW	Dimensions van type machine: 488 x 630 x 650 mm (19.2 x 24.8 x 25.6"); 38 kg (84 lb)
<b>VOLTAGES</b>	
220/240 V, 3Ph, 50 Hz	
380/415 V, 3Ph, 50 Hz	
208/240 V, 3Ph, 60 Hz	
380/415 V, 3Ph, 60 Hz	
12/24 V also available upon request	
Single-phase S3 25% service factor	

## OPTIONAL



Battery & Charger



Slotted blade

# S CUT 30 E

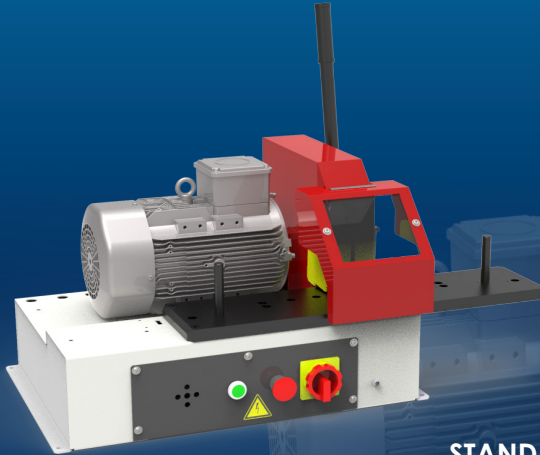
STARTER & PROFESSIONAL WORKSHOP  
BENCHTOP CUTTING MACHINE, OPTIONAL SKIVING

## KEY FEATURES

Compact design

Easy and safe to use

Versatile, scalloped blade for high performance and efficient cutting with minimal smoke



CUTTING MACHINES  
3

## STANDARD



Scalloped Blade



Dust Collector

## TECHNICAL SPECIFICATIONS

### CAPACITY

- 2wb: 2" max.
- 4ws: 2" max.
- 6ws: 1¼" max.
- Industrial: 2" max.

### ROTATION SPEED

3000 rpm

### SCALLOPED BLADE DIAMETER

300 mm (11.8")

### MAX HOSE OD.

85 mm (3.346")

### MOTOR

3.0 kW

### VOLTAGES

- 220/240 V, 3Ph, 50 Hz
- 380/415 V, 3Ph, 50 Hz
- 208/240 V, 3Ph, 60 Hz
- 380/415 V, 3Ph, 60 Hz

### DIMENSIONS

835 x 545 x 640 mm  
(33 x 21 x 25")

### PACKAGING

1170 x 770 x 1100 mm  
(46 x 30 x 43")

### NET WEIGHT

75 kg (165 lb)

### GROSS WEIGHT

90 kg (198 lb)

## OPTIONAL



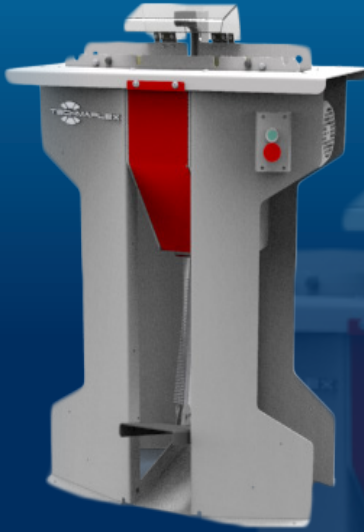
Cutting Rail

# S CUT 30 L

STARTER & PROFESSIONAL WORKSHOP  
STAND TYPE CUTTING MACHINE

## KEY FEATURES

- Compact design
- Easy and safe to use
- Scalloped blade for clean cut
- High performance and efficient cutting with minimal smoke
- Ergonomic, easy to clean
- Integrated dust collector



## STANDARD



Smoke Suction Connector



2 Dust Collectors



Scalloped blade

## TECHNICAL SPECIFICATIONS

### CAPACITY

- 2wb: 2" max.
- 4ws: 2" max.
- 6ws: 1¾" max.
- Industrial: 2"

### VOLTAGES

- 220/240 V, 3Ph, 50 Hz
- 380/415 V, 3Ph, 50 Hz
- 208/240 V, 3Ph, 60 Hz
- 380/415 V, 3Ph, 60 Hz

### ROTATION SPEED

3000 rpm

### DIMENSIONS

765 x 500 x 1150 mm  
(30 x 20 x 45")

### SCALLOPED BLADE DIAMETER

254 mm (10")

### PACKAGING

800 x 600 x 1200 mm  
(32 x 24 x 47")

### MAX HOSE OD.

85 mm (3.34")

### MOTOR

3.0 kW

### NET WEIGHT

92 kg (203 lb)

### GROSS WEIGHT

120 kg (265 lb)

Single-phase S3 25% service factor

## OPTIONAL



Cutting Rail



Slotted blade

# S DUO 30

STARTER & PROFESSIONAL WORKSHOP  
BENCHTOP, INTEGRATED CUTTING & SKIVING



## KEY FEATURES

- Compact design
- Two operations in one machine
- Easy and safe to use
- Versatile, scalloped blade for high performance and efficient cutting with minimal smoke
- Dust free skive operation (drawers for dust collection)
- Electronic brake

## STANDARD



Scalloped Blade



2 Dust Collectors

## TECHNICAL SPECIFICATIONS

### CAPACITY

- 2wb: 2" max.
- 4ws: 2" max.
- 6ws: 1¾" max.
- Industrial: 2" max.

### VOLTAGES

- 220/240 V, 3Ph, 50 Hz
- 380/415 V, 3Ph, 50 Hz
- 208/240 V, 3Ph, 60 Hz
- 380/415 V, 3Ph, 60 Hz

### ROTATION SPEED (CUT)

3000 rpm

### DIMENSIONS

835 x 545 x 640 mm  
(33 x 21 x 25")

### ROTATION SPEED (SKIVE)

200 rpm

### PACKAGING

### SCALLOPED BLADE DIAMETER

300 mm (11.8")

1170 x 770 x 1100 mm

### MAX HOSE OD.

85 mm (3.34")

### NET WEIGHT

85 kg (187 lb)

### MOTOR

2.2 kW

### GROSS WEIGHT

100 kg (220 lb)

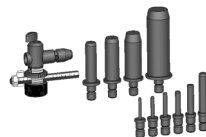
### TECHNICAL FEATURES

Skiving tools for External Skiving (ESE) and for Internal Skiving (IS) to be ordered separately

## OPTIONAL



Cutting Rail



Tool Kit ESE



Tool Kit IS

# S CUT 55/P

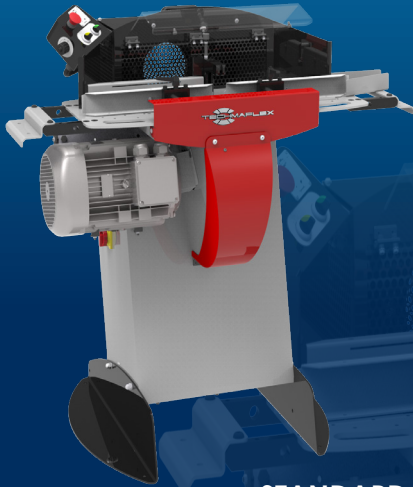
FULL SERVICE WORKSHOP, STARTER PRODUCTION UNITS  
STAND TYPE CUTTING MACHINE

## KEY FEATURES

- Versatile, slotted blade for high performance with minimal smoke
- Ergonomic and functional design
- Double foot pedal system
- Safety cover and feeding guides for hose (easy and fast cutting operation)
- Digital counter for maintenance assistance
- Adjustable speed for cutting on pneumatic version

CUTTING MACHINES

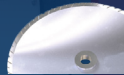
6



## STANDARD



Control Panel



Slotted Blade



Feeding Guide



Dust Collector

## TECHNICAL SPECIFICATIONS

CAPACITY	DIMENSIONS
2wb: 2" max.	1140 x 1000 x 1280 mm
4ws: 2" max.	(45 x 39 x 50")
6ws: 2" max.	PACKAGING
Industrial: 2"	1600 x 1200 x 1600 mm
ROTATION SPEED	(63 x 47 x 63")
3000 rpm	NET WEIGHT
SLOTTED BLADE DIAMETER	240 kg (529 lb)
400 mm (15.7")	GROSS WEIGHT
MAX HOSE OD.	280 kg (617 lb)
80 mm (3.15")	TECHNICAL FEATURES
MOTOR	Diameter of the suction connection: 150 mm (6")
7.5 kW	Options: Pneumatic bending system, scalloped blade
VOLTAGES	
220/240 V, 3Ph, 50 Hz	
380/415 V, 3Ph, 50 Hz	
208/240 V, 3Ph, 60 Hz	
380/415 V, 3Ph, 60 Hz	

## OPTIONAL



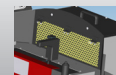
Cutting Rail



Decoiler



DV 32



Smoke suction



Smoke extractor

# S CUT 75/P

EXPERT SERVICE LINE  
STAND TYPE CUTTING MACHINE



Pneumatic version

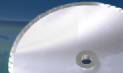


Manual version

## KEY FEATURES

- Very powerful
- Heavy duty for difficult cuts
- Resistant for extreme cuts
- New design:
  - Easy maintenance
  - Efficiency for smoke extraction
- Motor brake (option)
- Pneumatic version (option)
- Option for industrial hose:
  - Blade 540 mm for hoses with external OD max 150 mm

## STANDARD



Slotted Blade

## TECHNICAL SPECIFICATIONS

### CAPACITY

- 2wb: 3" max.
- 4ws: 2" max.
- 6ws: 2" max.

### ROTATION SPEED

3000 rpm

### SLOTTED BLADE DIAMETER

520 mm (20.5") included

### MAX HOSE OD.

125 mm (5")\*

### MOTOR

7.5 kW

### VOLTAGES

- 220/240 V, 3Ph, 50 Hz
- 380/415 V, 3Ph, 50 Hz
- 208/240 V, 3Ph, 60 Hz
- 380/415 V, 3Ph, 60 Hz

### DIMENSIONS

910 x 820 x 1280 mm  
(36 x 32 x 50")

### NET WEIGHT

215 kg (474 lb)

### TECHNICAL FEATURES

Diameter of suction connection: 130 mm

Electronic soft start

#### Optional tool:

- Motor brake
- Pneumatic version
- Other blade on demand

\*150 mm with blade option 540 mm

## OPTIONAL



Cutting Rail



Decoiler



DV 32



Smoke extractor

P CUT 90

EXPERT SERVICE LINE  
STAND TYPE CUTTING MACHINE

KEY FEATURES

- Very powerful
- Heavy duty for difficult cuts
- Hydraulic bending
- Motor brake
- Electronic soft start
- Smoke suction integrated in cutting table



STANDARD



Slotted Blade



Production Counters



Smoke Suction Connector



CME Electrical Footswitch

TECHNICAL SPECIFICATIONS

CAPACITY	VOLTAGES
2wb: 3 1/2" max.	220/240V, 3Ph, 50 Hz
4ws: 3 1/2" max.	380/415V, 3Ph, 50 Hz
6ws: 3" max.	208/240V, 3Ph, 60 Hz
3000 rpm	380/415V, 3Ph, 60 Hz
ROTATION SPEED	DIMENSIONS
520 mm (20.5") included	1000 x 1060 x 1350 mm
(39 x 42 x 53")	
MAX HOSE OD.	NET WEIGHT
125 mm (5")	260 kg (573 lb)
MOTOR	
9.0 kW	
TECHNICAL FEATURES	
Diameter of suction connection: 110 mm (4.33")	

OPTIONAL



Cutting Rail



Decoiler



DV 32



Smoke extractor

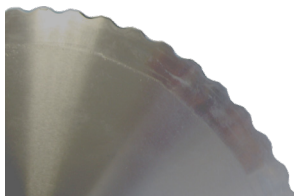


## ACCESSORIES AND TOOLS

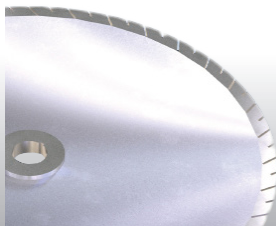
## CUTTING DISCS

**SCALLOPED BLADE TYPE**

The scalloped blade is suitable for all hose types. It is able to reach a high quality of cutting surface and is the standard on 254 and 300 mm blades.

**SLOTTED BLADE TYPE**

The slotted blade is recommended for cutting standard and heavy duty hoses. It is ideal for continuous service, as the blade profile has been optimised to maintain a low temperature on the cutting edge. This blade provides an extended operational life of up to 2 times superior to the previous blade, and is the standard on 400 and 520 mm blades. It is optional on diameter 254 mm.



## MOTOR BRAKE

The motor brake is a device which stops the disc immediately when the stop button is pushed.

## PNEUMATIC BENDING

Available on S CUT 55 and S CUT 75.

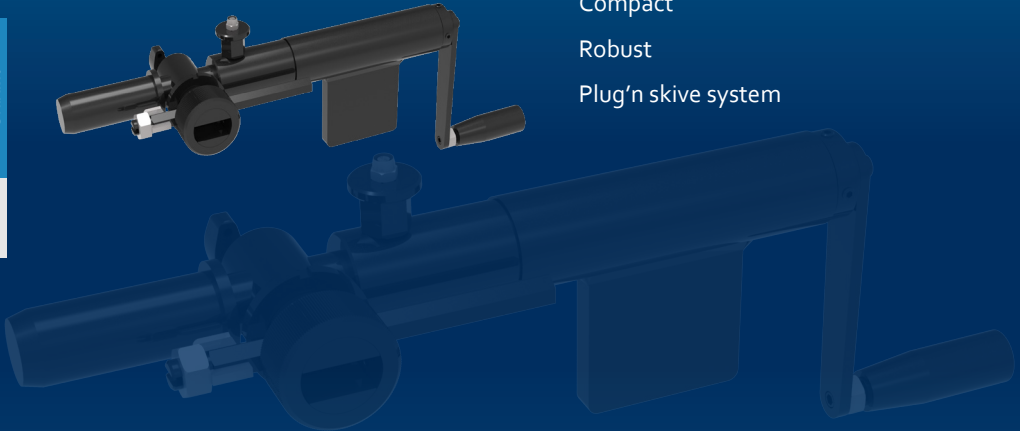
Pneumatic bending facilitates cutting, as the operator does not have to force the hose on the blade. The pneumatic system, activated by a foot switch, offers hands free operation. This is the same principle for the hydraulic bending on P CUT 90.

# H SKIVE

FIELD SERVICE & MOBILE WORKSHOP  
MANUAL, PORTABLE SKIVING TOOL

## KEY FEATURES

- Portable, lightweight
- Economic
- Simple
- Compact
- Robust
- Plug'n skive system



SKIVING MACHINES 10

## TECHNICAL SPECIFICATIONS

### CAPACITY

2wb: 2" max.  
4ws: 2" max.

### DIMENSIONS

413 X 52 X 224 mm  
(16 x 2 x 9")

### NET WEIGHT

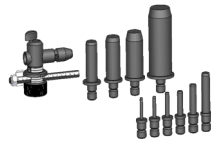
3 kg (7 lb)

### TECHNICAL FEATURES

- Tool selection:
- External Skiving Kit (ESE) including 10 mandrels (6-8-10-13-16-19-25-32-38-50)
  - Internal Skiving Kit (IS) including 7 mandrels (13-16-19-25-32-38-50)

Internal skiving tools can also be ordered per diameter

## OPTIONAL



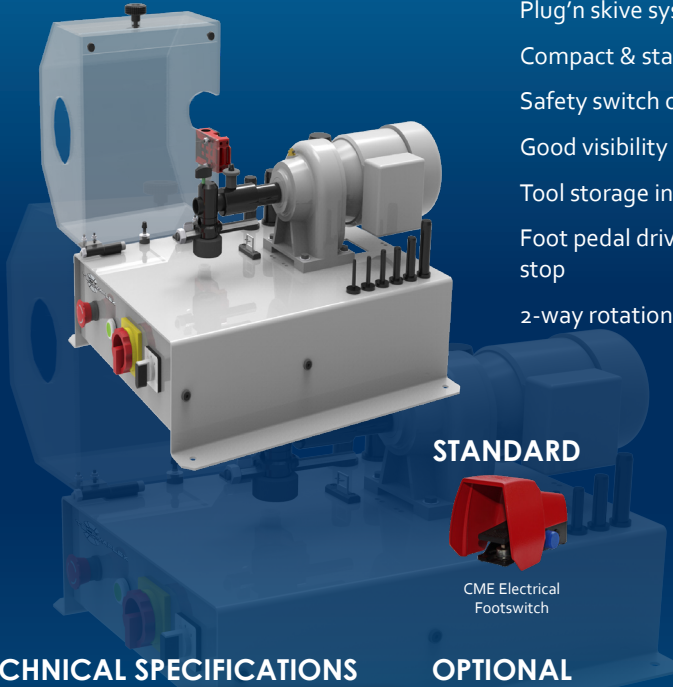
Tool Kit ESE



Tool Kit IS

# S SKIVE 100

SMALL SERVICE WORKSHOP  
BENCHTOP SKIVING



## KEY FEATURES

- Plug'n skive system
- Compact & stable
- Safety switch on the cover
- Good visibility
- Tool storage included
- Foot pedal drive with emergency stop
- 2-way rotation

## STANDARD



CME Electrical Footswitch

## TECHNICAL SPECIFICATIONS

### CAPACITY

2wb: 2" max.  
4ws: 2" max.

### ROTATION SPEED

100 rpm

### MOTOR

0.25 kW

### VOLTAGES

220/240 V, 1Ph, 50 Hz  
380/415 V, 3Ph, 50 Hz  
220/240 V, 1Ph, 60 Hz  
380/415 V, 3Ph, 60 Hz

### DIMENSIONS

500 x 660 x 360 mm  
(19 x 26 x 14")

### PACKAGING

800 x 600 x 700 mm  
(31 x 24 x 28")

### NET WEIGHT

45 kg (99 lb)

### GROSS WEIGHT

55 kg (121 lb)

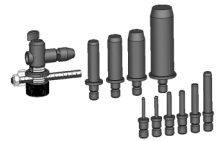
### TECHNICAL FEATURES

Tools available (to be ordered separately)  
ESE, IS, ESP1, ESP2

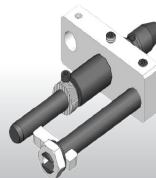
## OPTIONAL



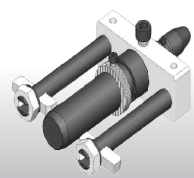
Tool Kit IS



Tool Kit ESE



Tool Kit ESP 1



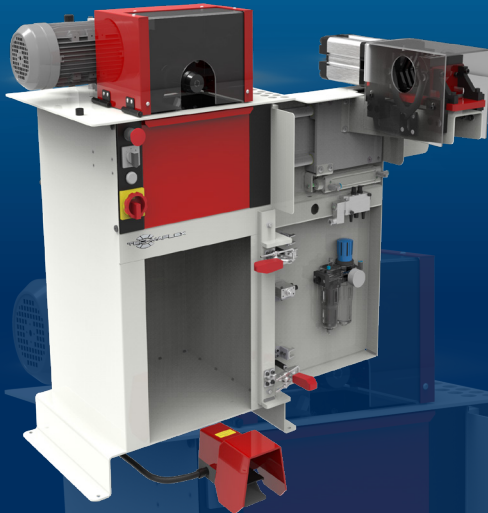
Tool Kit ESP 2

P SKIVE 300

STARTER & PROFESSIONAL WORKSHOP  
STAND TYPE CUTTING MACHINE

KEY FEATURES

- Plug'n skive system
- Large dust collector
- Robust & easily adjustable knife for quick and easy changeover
- Suitable for high volume production
- 2-way rotation



Model shown: OEM version with Pneumatic Clamping system option

TECHNICAL SPECIFICATIONS

CAPACITY

- 2wb: 2" max.
- 4ws: 2" max.
- 6ws: 3" max. \*

ROTATION SPEED

300 rpm

MOTOR

0.9 kW

VOLTAGES

- 220/240 V, 3Ph, 50 Hz
- 380/415 V, 3Ph, 50 Hz
- 208/240 V, 3Ph, 60 Hz
- 380/415 V, 3Ph, 60 Hz

DIMENSIONS

675 x 550 x 1130 mm  
(27 x 22 x 44")

\*with clamping system

PACKAGING

800 x 600 x 1200 mm  
(32 x 24 x 47")

NET WEIGHT

100 kg (220 lb)

GROSS WEIGHT

160 kg (353 lb)

TECHNICAL FEATURES

Options available: speed regulator, hose clamping system (recommended for hoses from 2")

Tools available (to be ordered separately): ESA, IS, ESP1, ESP2

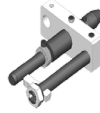
OPTIONAL



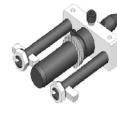
Tool Kit IS



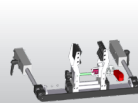
Tool kit ESA



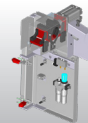
Tool Kit ESP 1



Tool Kit ESP 2



Manual Hose Clamping System



Pneumatic Hose Clamping System



Speed Regulator

## ACCESSORIES AND TOOLS

### EXTERNAL SKIVING TOOLS

Depending on the machine and on customer needs, Techmaflex offers 3 types of external skiving tools:

#### ESE (EXTERNAL SKIVING ECONOMIC)

For H Skive, S SKive 100 and S Duo 30

The ESE kit includes 10 mandrels:  $\frac{3}{4}$ " ,  $\frac{5}{16}$ " ,  $\frac{3}{8}$ " ,  $\frac{1}{2}$ " ,  $\frac{5}{8}$ " ,  $\frac{3}{4}$ " , 1" ,  $1\frac{1}{4}$ " ,  $1\frac{1}{2}$ " , 2"

#### ESA (EXTERNAL SKIVING ADJUSTABLE)

For P Skive 300

The ESA kit includes 11 mandrels:  $\frac{3}{16}$ " ,  $\frac{1}{4}$ " ,  $\frac{5}{16}$ " ,  $\frac{3}{8}$ " ,  $\frac{1}{2}$ " ,  $\frac{5}{8}$ " ,  $\frac{3}{4}$ " , 1" ,  $1\frac{1}{4}$ " ,  $1\frac{1}{2}$ " , 2"

ESA mandrels are also available in  $2\frac{1}{2}$ " and 3"

#### ESP (EXTERNAL SKIVING PRODUCTION)

For S Skive 100 and P Skive 300

ESP tools are individual 'skiving heads' intended to be pre-set to the right depth and length for greater productivity. They are recommended for batch skiving operations and a second knife can be added for abrasion resistant covers.

ESP is available in:  $\frac{3}{16}$ " ,  $\frac{1}{4}$ " ,  $\frac{5}{16}$ " ,  $\frac{3}{8}$ " ,  $\frac{1}{2}$ " ,  $\frac{5}{8}$ " ,  $\frac{3}{4}$ " , 1" ,  $1\frac{1}{4}$ " ,  $1\frac{1}{2}$ " , 2" ,  $2\frac{1}{2}$ " and 3"

### INTERNAL SKIVING TOOLS

#### IS (INTERNAL SKIVING)

For all machines

The IS kit includes 7 mandrels:  $\frac{1}{2}$ " ,  $\frac{5}{8}$ " ,  $\frac{3}{4}$ " , 1" ,  $1\frac{1}{4}$ " ,  $1\frac{1}{2}$ " , 2"

They are also available in  $\frac{5}{8}$ " ,  $2\frac{1}{2}$ " and 3"

The ring is heat treated to resist the abrasion of the hose wires.

Optional venturi system with IS tool.

## ACCESSORIES AND TOOLS

### HOSE CLAMPING SYSTEM

Recommended for skiving hoses over 2" (DN 50)

### PLUG'N SKIVE SYSTEM

All Techmafex skiving machines are equipped with the Plug'n Skive System which allows the quick and easy insertion of tools.

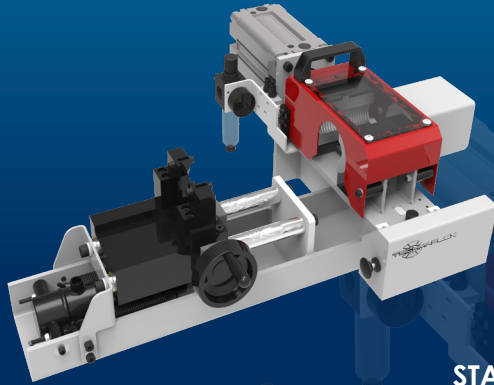
With the Plug'n Skive System no tools are needed to insert the skiving mandrel, simply push the mandrel into the locking system to unlock it, lift a knob and pull out the tool.

S PUSH 1500

EXPERT SERVICE LINE  
BENCHTOP COUPLING INSERTER

KEY FEATURES

- Compact
- Sturdy
- Powerful



STANDARD



Hydro-pneumatic pump

TECHNICAL SPECIFICATIONS

CAPACITY

- 2wb: 2" max.
- 4ws: 2" max.
- 6ws: 2" max.

DIMENSIONS

750 x 660 x 300 mm  
(30 x 26 x 12")

NET WEIGHT

70 kg (154 lb)

POWER SUPPLY

Compressed air (7 bar)

TECHNICAL FEATURES

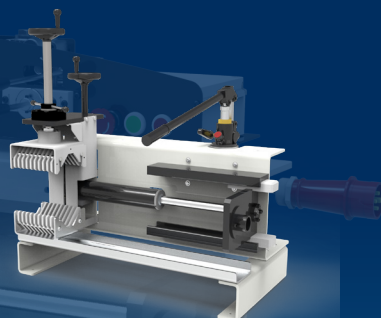
Optional tool: for small bore 3/4", 3/8", 1/2" shell

# S PUSH 2000

EXPERT SERVICE LINE  
BENCHTOP COUPLING INSERTER

## KEY FEATURES

- Compact
- Sturdy
- Powerful hydraulic cylinder
- Insert centring device
- Joystick operated clamping and insertion



Hydraulic manual version

## TECHNICAL SPECIFICATIONS

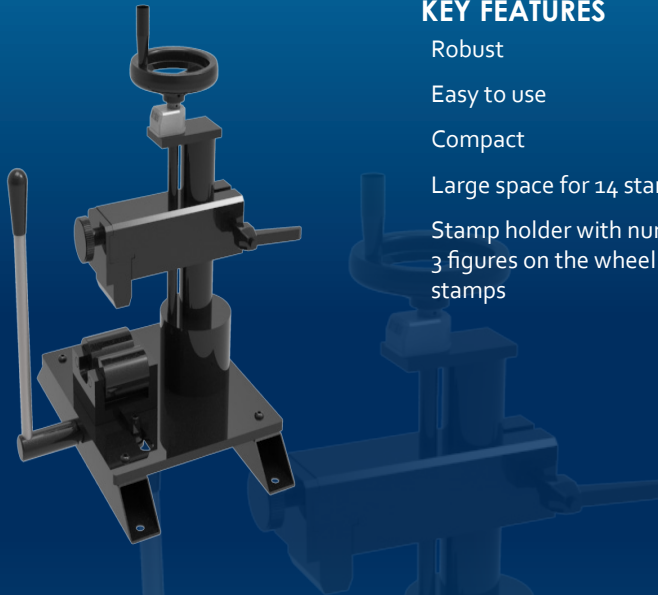
<b>CAPACITY</b>	<b>DIMENSIONS</b>
38 mm min. 170 mm OD Hose	800 x 500 x 900 mm (31 x 20 x 35")
<b>INSERTION SPEED*</b>	<b>VOLTAGES</b>
28 mm/s	380/415, 3 Ph, 50 Hz
<b>INSERTION STROKE</b>	<b>MAXIMUM FLANGE</b>
300 mm	250 mm
<b>INSERTION FORCE</b>	<b>CLAMPING LENGTH</b>
2 000 daN	200 mm
<b>POWER*</b>	<b>NET WEIGHT</b>
1.5 kW	150 kg (330 lb)

\* with the electrical version



S MARK 50

AFTER MARKET SERVICE  
BENCHTOP, FERRULE MARKING



KEY FEATURES

- Robust
- Easy to use
- Compact
- Large space for 14 stamps
- Stamp holder with numbering wheel; 3 figures on the wheel + 1 groove for stamps

TECHNICAL SPECIFICATIONS

<b>CAPACITY</b>	<b>SIZE OF THE STAMPS</b>
2wb: 4" max.	6 x 3 mm
4ws: 4" max.	(0.236 x 0.118")
<b>DIMENSIONS</b>	<b>HEIGHT OF THE LETTERS</b>
390 x 360 x 520 mm (15 x 14 x 20")	2.5 mm (0.098")
<b>PACKAGING</b>	<b>TECHNICAL FEATURES</b>
800 x 600 x 830 mm (31 x 24 x 33")	Optional stamp holder with numbering wheel: 3 figures on the wheel and one groove for 10 stamps
<b>NET WEIGHT</b>	<b>STAMP BOX</b>
34 kg (75 lb)	Includes stamp box of 100 stamps & 20 blanks
<b>GROSS WEIGHT</b>	
50 kg (110 lb)	
<b>STANDARD STAMP HOLDER</b>	
2 x 14 stamps	

## S CLEAN 50

### CK 50



### TECHNICAL SPECIFICATIONS

**NUMBER OF NOZZLES**

10 to suit hose ID

**COMPRESSED AIR**

7 bar

**MINIMUM INTERNAL DIAMETER OF HOSE**

6 mm

**MAXIMUM INTERNAL DIAMETER**

51 mm

**TECHNICAL FEATURES**

Includes 575 pellets & projectile catcher

## HRD 07

HOSES CAN BE STORED ON THE HOSE DISPENSER



### TECHNICAL SPECIFICATIONS

**MAXIMUM NUMBER OF COILS**

7

**MAXIMUM WEIGHT/COIL**

80 kg

**MINIMUM INTERNAL DIAMETER**

300 mm

**MAXIMUM EXTERNAL DIAMETER**

850 mm

**MAXIMUM HEIGHT**

200 mm

**DIMENSIONS**

1180 x 1180 x 2115 mm (100 kg)

**PACKAGING**

1200 x 1200 x 720 mm (135 kg)

DV 32 - OEM DECOILER

DV 32



OEM



The hose decoiler is highly adaptable, suitable for a hose reel or a coil up to 100 kgs. It is stable and equipped with a hose guide system and a manual break, offering increased safety and efficiency. The OEM decoiler is also available with electric drive.

INDUSTRIAL DECOILER



**VOLTAGES**

400 V, 3Ph, 50 Hz

**DIMENSIONS**

2600 x 2600 x 1600 mm

(102 x 102 x 63")

**NET WEIGHT**

714 kg (1570 lb)

**MOTOR**

3 kW with speed control

**POWER TORQUE**

1200 N

**TABLE DIAMETER**

2200 mm

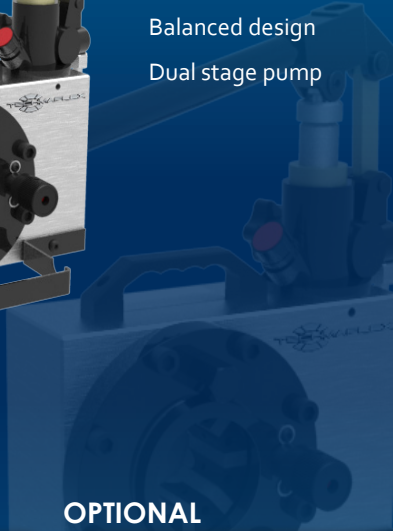
Robust, motorised decoiler for large bore industrial hose. Comes with 6 manually adjustable centring pins, remote stop-start controller and a high torque, 3kW motor with speed control.

# H CRIMP 80

FIELD SERVICE & MOBILE WORKSHOP  
HAND PUMP, PORTABLE

## KEY FEATURES

- Compact
- Lightweight
- Easy to use
- Balanced design
- Dual stage pump



## TECHNICAL SPECIFICATIONS

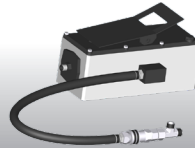
CAPACITY*	DIMENSIONS
2wb: 1" max. 4ws: 3/4" max.	330 x 250 x 400 mm (13 x 10 x 16")
CRIMP RANGE	PACKAGING
6 - 43 mm (0.236 - 1.693")	800 x 600 x 830 mm (31 x 24 x 33")
CRIMP FORCE	NET WEIGHT
80 t	28 kg (62 lb)
OPENING WITH DIES	GROSS WEIGHT
+20 mm (+0.787")	41 kg (90 lb)
COMPLETE OPENING	TECHNICAL FEATURES
59 mm (2.323")	Hand pump: 5000 psi (double speed)
MASTER DIE LENGTH	
56 mm (2.205")	
STANDARD DIES	
15, 18, 21, 24, 27, 30, 39**	

\*Indicative capacities depending on hose and fitting type  
\*\* Master-dies used as dies set N°39

## OPTIONAL



Maintenance Kits



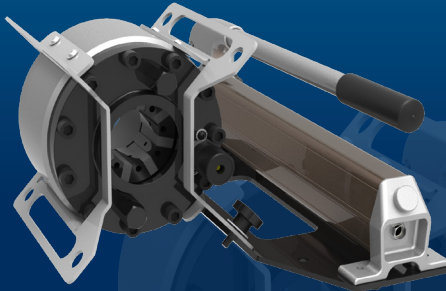
Hydro-pneumatic Pump

# H CRIMP 110

FIELD SERVICE & MOBILE WORKSHOP  
HAND PUMP, PORTABLE

## KEY FEATURES

- Flexible
- Portable
- Robust (protected narrow head)
- Multi-positioning (with removable plate)



## TECHNICAL SPECIFICATIONS

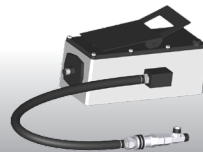
<b>CAPACITY*</b>	<b>STANDARD DIES</b>
2wb: 1" max.	15, 18, 21, 24, 27, 30
4ws: 1" max.	<b>DIMENSIONS</b>
<b>CRIMP RANGE</b>	540 x 400 x 225 mm (21 x 16 x 9")
6 - 43 mm (0.236 - 1.693")	<b>PACKAGING</b>
<b>CRIMP FORCE</b>	800 x 600 x 830 mm
110 t	(31 x 24 x 33")
<b>OPENING WITH DIES</b>	<b>NET WEIGHT</b>
+20 mm (+0.787")	28 kg (62 lb)
<b>COMPLETE OPENING</b>	<b>WEIGHT (HEAD ONLY)</b>
59 mm (2.323")	21 kg (46 lbs)
<b>MASTER DIE LENGTH</b>	
60 mm (2.362")	

\*Indicative capacities depending on hose and fitting type  
\*\* Master-dies used as dies set N°39

## OPTIONAL



Maintenance Kits



Hydro-pneumatic Pump

# H CRIMP 137

FIELD SERVICE & MOBILE WORKSHOP  
HAND PUMP, PORTABLE

## KEY FEATURES

- High capacity
- Narrow head
- Audio-visual signal
- 350 bar technology robust & reliable
- Large opening



CRIMPING MACHINES 22

## TECHNICAL SPECIFICATIONS

## OPTIONAL

### CAPACITY\*

2wb / 4ws: 1 3/4" max.  
Industrial: 1 1/2" max.

### CRIMP RANGE

4 - 70 mm (0.157 - 2.756")

### CRIMP FORCE

137 t

### OPENING WITH DIES

+28 mm (+1.102")

### COMPLETE OPENING

100 mm (3.937")

### MASTER DIE LENGTH

75 mm (2.962")

### STANDARD DIES

15, 18, 21, 24, 27, 30, 33, 36,  
39, 42, 45, 48, 51  
and Refrifast dies 14, 18, 21

### DIMENSIONS

480 x 250 x 340 mm  
(19 x 10 x 13")

### PACKAGING

800 x 600 x 830 mm

(31 x 24 x 33")

### NET WEIGHT

55 kg (121 lb)

### GROSS WEIGHT

75 kg (165 lb)

\*Indicative capacities depending on hose and fitting type



Maintenance Kit



Quick Change Gun



Aluminium Quick Change Gun



Die Storage Panel



Hydro-pneumatic Pump



Marking Dies



Die Sets for Brake & Air Conditioning Hoses

# S CRIMP 137 EVO R

MAINTENANCE WORKSHOP  
VERTICAL BENCHTOP



## KEY FEATURES

- Ergonomically positioned adjustable head
- Axis of the head situated perpendicular to the operator
- Compact

## TECHNICAL SPECIFICATIONS

### CAPACITY\*

2wb / 4ws: 1¾" max.

Industrial: 1 1/2" max.

### CRIMP RANGE

4- 70 mm (0.157 - 2.756")

### CRIMP FORCE

137 t

### OPENING WITH DIES

+28 mm (+1.102")

### COMPLETE OPENING

100 mm (3.937")

### MASTER DIE LENGTH

75 mm (2.953")

### STANDARD DIES

15, 18, 21, 24, 27, 30, 33, 36,  
39, 42, 45, 48, 51

### NOISE LEVEL

70 dB A

\*Indicative capacities depending on hose and fitting type

### MOTOR

1.5 kW (110V)

2.2 kW (230V)

### VOLTAGES

110V, 1Ph, 60 Hz

220/240V, 1 Ph, 50 Hz

380/415V, 3 Ph + N, 50 Hz

+12/24V

Other voltages available on request

### DIMENSIONS

360 x 530 x 620 mm

(14 x 21 x 25")

### NET WEIGHT

85 kg (187 lb)

### GROSS WEIGHT

89 kg (196 lb)

## OPTIONAL



Maintenance Kit



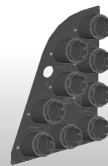
Die Storage Panel



Aluminium Quick Change Gun



Quick Change Gun



Die Storage Panel EVO R

# S CRIMP 137 EVO

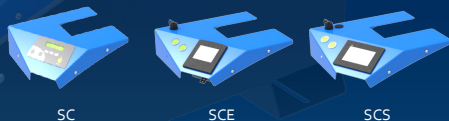
ASSEMBLING FOR FIELD REPAIR  
BENCHTOP CRIMP MACHINE



## KEY FEATURES

- Crimp force of up to 137 tonnes for hoses up to 1 3/4"
- Easy to use and robust
- Extensive range of dies to suit crimping of hydraulic hoses
- Easy set up and maintenance
- Fast and reliable
- Digital micrometer
- Model shown equipped with SC control panel

## CONTROL OPTIONS AVAILABLE ON REQUEST



SC

SCE

SCS

## TECHNICAL SPECIFICATIONS

### CAPACITY\*

2wb / 4ws: 1 3/4" max.  
Industrial: 1 1/2" max.

### CRIMP RANGE

4 - 70 mm (0.157 - 2.756")

### CRIMP FORCE

137 t

### OPENING WITH DIES

+28 mm (+1.102")

### COMPLETE OPENING

100 mm (3.937")

### MASTER DIE LENGTH

75 mm (2.953")

### STANDARD DIES

15, 18, 21, 24, 27, 30, 33, 36,  
39, 42, 45, 48, 51

### NOISE LEVEL

70 dB A

### MOTOR

4.0 kW

### VOLTAGES

220/240 V, 3Ph, 50 Hz

380/415 V, 3Ph, 50 Hz

208/240 V, 3Ph, 60 Hz

380/415 V, 3Ph, 60 Hz

Other voltages available on request

### DIMENSIONS

765 x 400 x 650 mm

(30 x 16 x 26")

### NET WEIGHT

160 kg (353 lb)

\*Indicative capacities depending on hose and fitting type

## OPTIONAL



Maintenance Kit



Electrical Footswitch



Die Storage Panel



Die Storage Table



Die Storage Table EVO



Quick Change Gun



Aluminium Quick Change Gun



Digital Caliper



Die Sets for Brake & Air Conditioning Hoses



Marking Dies



Die Storage Panel EVO



# S CRIMP 240 EVO

PROFESSIONAL WORKSHOP  
BENCHTOP



## KEY FEATURES

- Crimp force of up to 240 tonnes for hoses up to 2"
- Easy to use and robust
- Radial die movement
- High crimping force
- Extensive range of dies to suit crimping of hydraulic hoses
- Easy set up and maintenance
- Fast and reliable
- Model shown equipped with SCE control panel

## CONTROL OPTIONS AVAILABLE ON REQUEST



## TECHNICAL SPECIFICATIONS

### CAPACITY\*

- 2wb: 2" max.
- 4ws: 2" max.
- 6ws: 1 1/4" max.

### CRIMP RANGE

4 - 76 mm (0.157 - 2.992")

### CRIMP FORCE

240 t

### OPENING WITH DIES

+38 mm (+1.496")

### COMPLETE OPENING

118 mm (4.645")

### MASTER DIE LENGTH

100 mm (3.937")

### STANDARD DIES

15, 18, 21, 24, 27, 30, 33, 36, 39, 42, 45, 48, 51, 57, 62, 66, 70

\*Indicative capacities depending on hose and fitting type

### NOISE LEVEL

<70 dB A

### MOTOR

4.0 kW

### VOLTAGES

220/240 V, 3Ph, 50 Hz

380/415 V, 3Ph, 50 Hz

208/240 V, 3Ph, 60 Hz

380/415 V, 3Ph, 60 Hz

Other voltages available on request

### DIMENSIONS

765 x 400 x 650 mm

(30 x 16 x 26")

### NET WEIGHT

165 kg (364 lb)

## OPTIONAL



Maintenance Kit



Electrical Footswitch



Die Storage Panel



Die Storage Table



Die Storage Table EVO



Quick Change Gun



Aluminium Quick Change Gun



Mechanical Backstop



Die Sets for Brake & Air Conditioning Hoses



Marking Dies



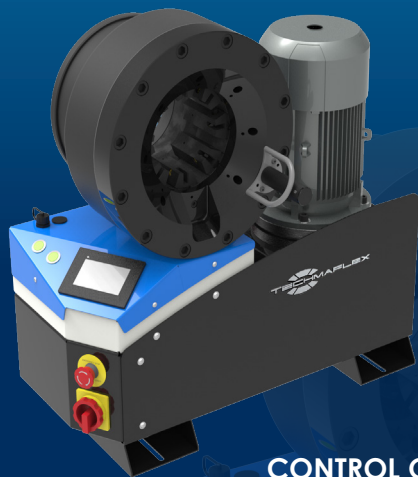
Digital caliper



Die Storage Panel EVO

# S CRIMP 350 EVO / S CRIMP 350 L

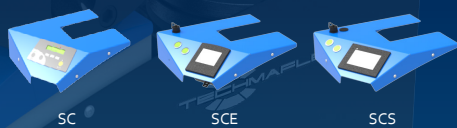
FULL SERVICE WORKSHOP  
BENCHTOP; VERY HIGH CRIMP FORCE



## KEY FEATURES

- Crimp force up to 350 tonnes for hoses up to 3"
- Easy to use and robust
- Automatic maintenance alerts
- Groove for 90° long drop fittings
- Also available as S CRIMP 350 L with 4.0 kW motor
- Model shown equipped with SCS control panel

## CONTROL OPTIONS AVAILABLE ON REQUEST



## TECHNICAL SPECIFICATIONS

<b>CAPACITY*</b>	<b>NOISE LEVEL</b>
2wb: 3" max. Textile / Suction Hose: 4" max. 4ws: 2" max. 6ws: 2" max.	<70 dB A
<b>CRIMP RANGE</b>	<b>MOTOR</b>
4 - 130 mm (0.157 - 5.118")	5.5 kW / 4 kW
<b>CRIMP FORCE</b>	<b>VOLTAGES</b>
350 t	220/240 V, 3Ph, 50 Hz 380/415 V, 3Ph, 50 Hz 208/240 V, 3Ph, 60 Hz 380/415 V, 3Ph, 60 Hz
<b>OPENING WITH DIES</b>	<b>DIMENSIONS</b>
+54 mm (+2.125")	765 x 400 x 750 mm (30 x 16 x 30")
<b>COMPLETE OPENING</b>	<b>NET WEIGHT</b>
180 mm (7.086")	262 kg (578 lb)
<b>MASTER DIE LENGTH</b>	<b>TECHNICAL FEATURES</b>
115 mm (4.523")	-Automatic maintenance alerts -Cylinder protection against dust - durable design -Also available as S CRIMP 350 EVO L with 4.0 kW Motor
<b>STANDARD DIES</b>	
15, 18, 21, 24, 27, 30, 33, 36, 39, 42, 45, 48, 51, 57, 62, 66, 70, 73, 76	

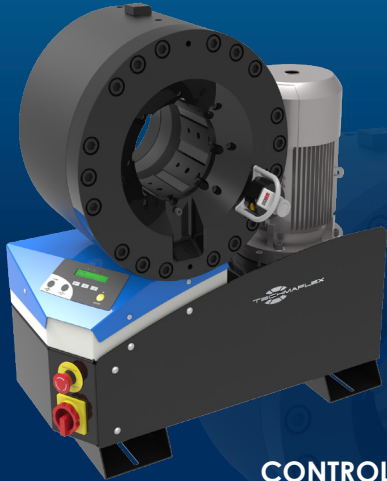
\*Indicative capacities depending on hose and fitting type

## OPTIONAL

Maintenance Kit	Electrical Footswitch
Die Storage Panel	Die Storage Table
Die Storage Table EVO	
Quick Change Gun	Aluminium Quick Change Gun
Mechanical Backstop	
Die Sets for Brake & Air Conditioning Hoses	Marking Dies
Digital caliper	Die Storage Panel EVO

# S CRIMP 420 EVO

## ASSEMBLING FOR FIELD REPAIR BENCHTOP CRIMPING MACHINE



### KEY FEATURES

- High crimping force of 420 tonnes
- Robust design for transport and operation in harsh environments
- Protected cylinders for trouble-free operation in high dust environments
- Large opening suitable for large bore hoses
- Easy maintenance due to foam pads and dust collector
- Model shown equipped with SC control panel

### CONTROL OPTIONS AVAILABLE ON REQUEST



SC

SCE

SCS

### TECHNICAL SPECIFICATIONS

<b>CAPACITY*</b>	<b>NOISE LEVEL</b>
6ws: 3" max.	<70 dB A
Industrial: 4" max.	<b>MOTOR</b>
<b>CRIMP RANGE</b>	5.5 kW
4 - 130 mm (0.157 - 5.118")	<b>VOLTAGES</b>
<b>CRIMP FORCE</b>	220/240 V, 3Ph, 50 Hz
420 t	380/415 V, 3Ph, 50 Hz
<b>OPENING WITH DIES</b>	208/240 V, 3Ph, 60 Hz
+48 mm (+1.9 inch)	380/415 V, 3Ph, 60 Hz
<b>COMPLETE OPENING</b>	<b>DIMENSIONS</b>
178 mm (7.0 inch)	765 x 500 x 800 mm
<b>MASTER DIE LENGTH</b>	(30 x 20 x 32")
120 mm (4.724 inch)	<b>PACKAGING</b>
<b>STANDARD DIES</b>	745 x 1150 x 945 mm
15, 18, 21, 24, 27, 30, 33, 36, 39, 42, 45, 48, 51, 57, 62, 66, 70, 73, 76	(29 x 45 x 37")
	<b>NET WEIGHT</b>
	395 kg (871 lb)

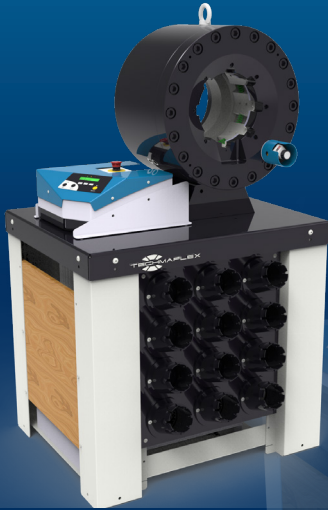
\*Indicative capacities depending on hose and fitting type

### OPTIONAL

- Maintenance Kit
- Electrical Footswitch
- Die Storage Panel
- Die Storage Table
- Die Storage Table EVO
- Quick Change Gun
- Aluminium Quick Change Gun
- Mechanical Backstop
- Die Sets for Brake & Air Conditioning Hoses
- Marking Dies
- Digital caliper
- Die Storage Panel EVO

# S CRIMP 450

## ASSEMBLING FOR FIELD REPAIR BENCHTOP CRIMP MACHINE



### KEY FEATURES

- High crimp force (450 tonnes)
- Large opening
- Wide family of dies for industrial hoses
- Long master dies
- Robust - designed for harsh environments
- Low noise level
- Easy die set-up with ergonomic gun
- Metallic guard for the set stop

### STANDARD VERSION BUTTON CONTROL OR SC



### TECHNICAL SPECIFICATIONS

<b>CAPACITY*</b>	<b>NOISE LEVEL</b>
6ws: 3" max.	<65 dB A
Industrial: 4" max.	<b>MOTOR</b>
<b>CRIMP RANGE</b>	5.5 kW
4 - 130 mm (0.157 - 5.118")	<b>VOLTAGES</b>
<b>CRIMP FORCE</b>	220/240 V, 3Ph, 50 Hz
450 t	380/415 V, 3Ph, 50 Hz
<b>OPENING WITH DIES</b>	208/240 V, 3Ph, 60 Hz
+70 mm (+2.755")	380/415 V, 3Ph, 60 Hz
<b>COMPLETE OPENING</b>	<b>DIMENSIONS</b>
197 mm (7.755")	830 x 775 x 1450 mm
<b>MASTER DIE LENGTH</b>	(33 x 31 x 57")
140 mm (5.512")	<b>PACKAGING</b>
<b>STANDARD DIES</b>	1120 x 1020 x 1770 mm
15, 18, 21, 24, 27, 30, 33, 36, 39, 42, 45, 48, 51, 57, 62, 66, 70, 73, 76	(44 x 40 x 70")
	<b>NET WEIGHT</b>
	720 kg (1587 lb)

\*Indicative capacities depending on hose and fitting type

### OPTIONAL

- Die Storage Panel
- Die Storage Table
- Quick Change Gun
- Marking Dies
- Aluminium Quick Change Gun
- Die Sets for Brake & Air Conditioning Hoses
- Electrical Footswitch

# V CRIMP 137

FIELD SERVICE & MOBILE WORKSHOP  
MOBILE VAN



## KEY FEATURES

- Robust and compact design
- Lightweight
- High crimping speed
- Suitable also for 90° elbow fittings
- Cylinder protection
- Remote head mounting option possible

## TECHNICAL SPECIFICATIONS

<b>CAPACITY*</b>	<b>NOISE LEVEL</b>
2wb / 4ws: 1 3/4" max.	72 dB A
Industrial: 1 1/2" max.	<b>MOTOR</b>
<b>CRIMP RANGE</b>	2.0 kW
4 - 70 mm (0.157 - 2.756")	<b>VOLTAGES</b>
<b>CRIMP FORCE</b>	12 V
137 t	24 V
<b>OPENING WITH DIES</b>	<b>DIMENSIONS</b>
+28 mm (+1.102")	650 x 550 x 610 mm
<b>COMPLETE OPENING</b>	(26 x 22 x 24")
100 mm (3.937")	<b>PACKAGING</b>
<b>MASTER DIE LENGTH</b>	800 x 600 x 830 mm
75 mm (2.952")	(31 x 24 x 33")
<b>STANDARD DIES</b>	<b>NET WEIGHT</b>
15, 18, 21, 24, 27, 30, 33, 36, 39, 42, 45, 48, 51	103 kg (227 lb)
	<b>GROSS WEIGHT</b>
	120 kg (265 lb)

\*Indicative capacities depending on hose and fitting type

## OPTIONAL



Maintenance Kit



Quick Change Gun



Aluminium Quick Change Gun



Die Storage Panel



Marking Dies



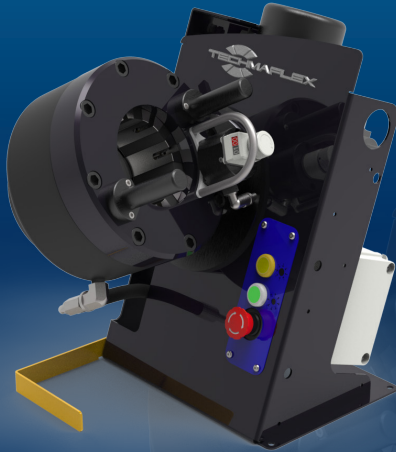
Die Sets for Brake & Air Conditioning Hoses



Battery & Charger

# V CRIMP 137 EVO R

FIELD SERVICE & MOBILE WORKSHOP  
MOBILE VAN



## KEY FEATURES

Swivel head for an ergonomic position

Head axis perpendicular to the operator

Compact and lightweight

## TECHNICAL SPECIFICATIONS

<b>CAPACITY*</b>	<b>MOTOR</b>
2wb / 4ws: 1 ¼" max. Industrial: 1 1/2" max.	2.0 kW
<b>CRIMP RANGE</b>	<b>VOLTAGES</b>
4 - 70 mm (0.157 - 2.756")	12 V 24 V
<b>CRIMP FORCE</b>	<b>DIMENSIONS</b>
137 t	392 x 398 x 486 mm (15 x 16 x 19")
<b>OPENING WITH DIES</b>	<b>PACKAGING</b>
+28 mm (+1.102")	800 x 600 x 830 mm (31 x 24 x 33")
<b>COMPLETE OPENING</b>	<b>NET WEIGHT</b>
100 mm (3.937")	73 kg (161 lb)
<b>MASTER DIE LENGTH</b>	<b>GROSS WEIGHT</b>
75 mm (2.952")	90 kg (199 lb)
<b>STANDARD DIES</b>	
15, 18, 21, 24, 27, 30, 33, 36, 39, 42, 45, 48, 51	
<b>NOISE LEVEL</b>	
72 dB A	

\*Indicative capacities depending on hose and fitting type

## OPTIONAL



Maintenance Kit



Quick Change Gun



Aluminum Quick Change Gun



Die Storage Panel



Marking Dies



Die Sets for Brake & Air Conditioning Hoses



Front Die Storage



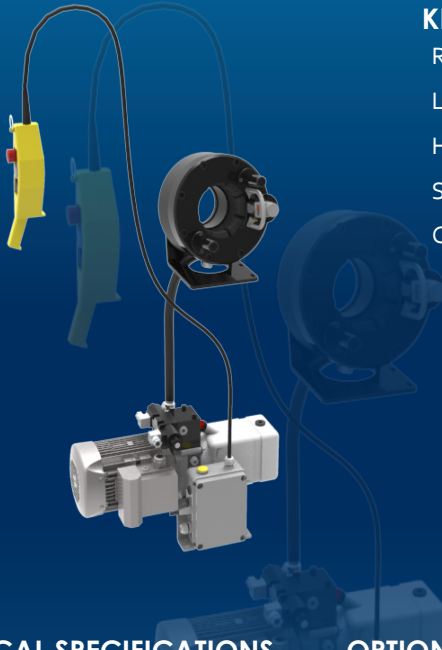
Die Storage Panel EVO



Battery & Charger

# V CRIMP 137 L

FIELD SERVICE & MOBILE WORKSHOP  
MOBILE VAN



## KEY FEATURES

- Robust and compact design
- Lightweight
- High crimping speed
- Suitable also for 90° elbow fittings
- Cylinder protection

## TECHNICAL SPECIFICATIONS

### CAPACITY\*

2wb / 4 ws: 1 3/4" max.  
Industrial: 1 1/2" max.

### CRIMP RANGE

4 - 70 mm (0.157 - 2.756")

### CRIMP FORCE

137 t

### OPENING WITH DIES

+28 mm (+1.102")

### COMPLETE OPENING

100 mm (3.937")

### MASTER DIE LENGTH

75 mm (2.952")

### STANDARD DIES

15, 18, 21, 24, 27, 30, 33, 36,  
39, 42, 45, 48, 51

### NOISE LEVEL

72 dB A

\*Indicative capacities depending on hose and fitting type

### MOTOR

2.0 kW

### VOLTAGES

12 V

24 V

### DIMENSIONS

250 x 320 x 300 mm  
(10 x 13 x 12")

### PACKAGING

800 x 600 x 830 mm  
(31 x 24 x 33")

### NET WEIGHT

86 kg (190 lb)

### GROSS WEIGHT

102 kg (225 lb)

### TECHNICAL FEATURES

Dimensions of power pack:  
440 x 320 x 320 mm  
(17 x 13 x 13")

## OPTIONAL



### Maintenance Kit



Quick Change Gun



Aluminium Quick Change Gun



Die Storage Panel



Marking Dies



Die Sets for Brake & Air Conditioning Hoses



Front Die Storage



Battery & Charger

# V CRIMP 240

FIELD SERVICE & MOBILE WORKSHOP  
MOBILE VAN



## KEY FEATURES

- Robust design
- Ergonomic micrometer
- High crimping speed
- Radial movement of the dies
- Cylinder protection
- Remote head mounting option possible

## TECHNICAL SPECIFICATIONS

<b>CAPACITY*</b>	<b>MOTOR</b>
2wb: 2" max.	2.0 kW
4ws: 2" max.	<b>VOLTAGES</b>
6ws: 1" max.	12 V
<b>CRIMP RANGE</b>	24 V
4 - 76 mm (0.157 - 2.992")	220/240 V, 3Ph, 50 Hz
<b>CRIMP FORCE</b>	380/415 V, 3Ph, 50 Hz
240 t	208/240 V, 3Ph, 60 Hz
<b>OPENING WITH DIES</b>	380/415 V, 3Ph, 60 Hz
+38 mm (+1.496")	<b>DIMENSIONS</b>
<b>COMPLETE OPENING</b>	650 x 550 x 670 mm
118 mm (4.646")	(26 x 22 x 26")
<b>MASTER DIE LENGTH</b>	<b>PACKAGING</b>
100 mm (3.937")	800 x 600 x 830 mm
<b>STANDARD DIES</b>	(31 x 24 x 33")
15, 18, 21, 24, 27, 30, 33, 36, 39, 42, 45, 48, 51, 57, 62, 66, 70	<b>NET WEIGHT</b>
<b>NOISE LEVEL</b>	118 kg (260 lb)
72 dB A	<b>GROSS WEIGHT</b>
	180 kg (397 lb)

\*Indicative capacities depending on hose and fitting type

## OPTIONAL



Maintenance Kit



Quick Change Gun



Aluminium Quick Change Gun



Die Storage Panel



Marking Dies



Die Sets for Brake & Air Conditioning Hoses



Front Die Storage



Battery & Charger



# V CRIMP 240 L

FIELD SERVICE & MOBILE WORKSHOP  
MOBILE VAN



## KEY FEATURES

- Robust design
- Ergonomic micrometer
- High crimping speed
- Radial movement of the dies
- Cylinder protection

## TECHNICAL SPECIFICATIONS

<b>CAPACITY*</b>	<b>MOTOR</b>
2wb: 2" max.	2.0 kW
4ws: 2" max.	<b>VOLTAGES</b>
6ws: 1" max.	12 V
<b>CRIMP RANGE</b>	24 V
4 - 76 mm (0.157 - 2.992")	220/240 V, 3Ph, 50 Hz
<b>CRIMP FORCE</b>	380/415 V, 3Ph, 50 Hz
240 t	208/240 V, 3Ph, 60 Hz
<b>OPENING WITH DIES</b>	380/415 V, 3Ph, 60 Hz
+38 mm (+1.496")	<b>DIMENSIONS</b>
<b>COMPLETE OPENING</b>	320 x 360 x 350 mm
118 mm (4.646")	(13 x 13.5 x 14")
<b>MASTER DIE LENGTH</b>	<b>PACKAGING</b>
100 mm (3.937")	800 x 600 x 830 mm
<b>STANDARD DIES</b>	(31 x 24 x 33")
15, 18, 21, 24, 27, 30, 33, 36, 39, 42, 45, 48, 51, 57, 62, 66, 70	<b>NET WEIGHT</b>
<b>NOISE LEVEL</b>	130 kg (287 lb)
72 dB A	<b>GROSS WEIGHT</b>
<b>TECHNICAL FEATURES</b>	180 kg (397 lb)
Dimensions of power pack: 440 x 320 x 320 mm (17 x 13 x 13")	
*Indicative capacities depending on hose and fitting type	

## OPTIONAL



Maintenance Kit



Quick Change Gun



Aluminium Quick Change Gun



Die Storage Panel



Marking Dies



Die Sets for Brake & Air Conditioning Hoses



Front Die Storage



Battery & Charger



Ergonomic Micrometer

# V CRIMP 350

FIELD SERVICE & MOBILE / CONTAINER WORKSHOP  
MOBILE VAN



## KEY FEATURES

- Robust design
- Large opening
- High crimping force
- Ergonomic micrometer
- High crimping speed
- Radial movement of the dies
- Cylinder protection
- Remote head mounting option possible

CRIMPING MACHINES 34

## TECHNICAL SPECIFICATIONS

<b>CAPACITY*</b>	<b>MOTOR</b>
2wb: 3" max.	2.0 kW
4ws: 2" max.	<b>VOLTAGES</b>
6ws: 2" max.	12 V
Textile / Suction Hose: 4"	24 V
<b>CRIMP RANGE</b>	220/240 V, 3Ph, 50 Hz
4 - 130 mm (0.157 - 5.118")	380/415 V, 3Ph, 50 Hz
<b>CRIMP FORCE</b>	208/240 V, 3Ph, 60 Hz
350 t	380/415 V, 3Ph, 60 Hz
<b>OPENING WITH DIES</b>	<b>DIMENSIONS</b>
+54 mm (+2.125")	650 x 550 x 750 mm
<b>COMPLETE OPENING</b>	(26 x 22 x 30")
180 mm (7.086")	<b>PACKAGING</b>
<b>MASTER DIE LENGTH</b>	800 x 600 x 830 mm
115 mm (4.528")	(31 x 24 x 33")
<b>STANDARD DIES</b>	<b>NET WEIGHT</b>
15, 18, 21, 24, 27, 30, 33, 36, 39, 42, 45, 48, 51, 57, 62, 66, 70, 73, 76	210 kg (463 lb)
<b>NOISE LEVEL</b>	<b>GROSS WEIGHT</b>
<65 dB A	260 kg (573 lb)
	<b>SAFETY REMARK</b>
	Possible limitations in case of double elbow fittings

\*Indicative capacities depending on hose and fitting type

## OPTIONAL



Maintenance Kit



Quick Change Gun



Aluminium Quick Change Gun



Die Storage Panel



Marking Dies



Die Sets for Brake & Air Conditioning Hoses



Front Die Storage



Battery & Charger

# P CRIMP 200

ASSEMBLING FOR MASS PRODUCTION  
STAND TYPE CRIMP MACHINE, SCS SYSTEM



## KEY FEATURES

- Safe Crimp System (SCS) control
- Large production capacity (small/medium bore)
- Low noise level
- Precise
- Robust
- Available with SCE control panel

## STANDARD



## TECHNICAL SPECIFICATIONS

<b>CAPACITY*</b>	<b>NOISE LEVEL</b>
Industrial: 2" max.	<69 dB A
4ws: 1 1/2" max.	<b>MOTOR</b>
<b>CRIMP RANGE</b>	5.5 kW
4 - 70 mm (0.157 - 2.756")	<b>VOLTAGES</b>
<b>CRIMP FORCE</b>	220/240 V, 3Ph, 50 Hz
200 t	380/415 V, 3Ph, 50 Hz
<b>OPENING WITH DIES</b>	208/240 V, 3Ph, 60 Hz
+51 mm (+2")	<b>DIMENSIONS</b>
<b>COMPLETE OPENING</b>	890 x 690 x 1380 mm
131 mm (5.157")	(35 x 27 x 54")
<b>MASTER DIE LENGTH</b>	<b>PACKAGING</b>
95 mm (3.740")	1120 x 1020 x 1725 mm
<b>STANDARD DIES</b>	(44 x 40 x 68")
15, 18, 21, 24, 27, 30, 33, 36, 39, 42, 45, 48	<b>NET WEIGHT</b>
	600 kg (1323 lb)

\*Indicative capacities depending on hose and fitting type

## OPTIONAL

SRC Quick Change Gun

Mechanical Backstop

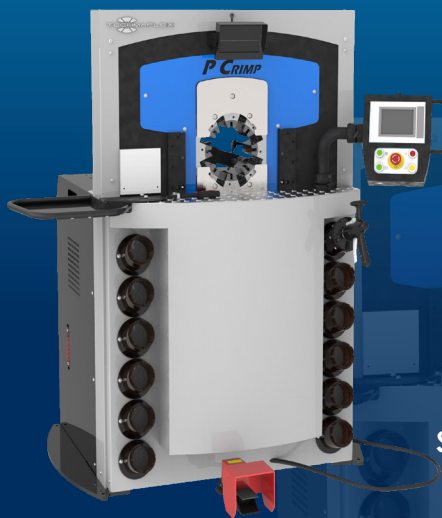
Digital Caliper

# P CRIMP 320

ASSEMBLING FOR MASS PRODUCTION  
STAND TYPE CRIMP MACHINE

## KEY FEATURES

- High crimp force
- Large opening
- Safe Crimp System (SCS) control
- Wide family of dies for industrial hoses
- Robust structure
- Fast and ergonomic
- Low noise level



## STANDARD



Quick Change Gun

SCS Safe Crimp System

Mirror

Electrical Footswitch

Die Storage

## TECHNICAL SPECIFICATIONS

### CAPACITY\*

2wb: 3" max.

4ws: 2" max.

6ws: 2" max.

Textile & Suction Hose: 4" max.

### CRIMP RANGE

4 - 130 mm (0.157 - 5.118")

### CRIMP FORCE

320 t

### OPENING WITH DIES

+80 mm (+3.149")

### COMPLETE OPENING

207 mm (8.145")

### MASTER DIE LENGTH

100 mm (3.937")

### STANDARD DIES

15, 18, 21, 24, 27, 30, 33, 36, 39, 42, 45, 48, 51, 57, 62, 66, 70, 73, 76

### NOISE LEVEL

<65 dB A

### MOTOR

5.5 kW / 7.5 kW (Fast Version)

### VOLTAGES

220/240 V, 3Ph, 50 Hz

380/415 V, 3Ph, 50 Hz

208/240 V, 3Ph, 60 Hz

380/415 V, 3Ph, 60 Hz

### DIMENSIONS

1240 x 995 x 1615 mm

(49 x 39 x 64")

### PACKAGING

1400 x 1100 x 1960 mm

(55 x 43 x 77")

### NET WEIGHT

2000 kg (4409 lb)

### GROSS WEIGHT

2300 kg (5071 lb)

\*Indicative capacities depending on hose and fitting type

## OPTIONAL



Die Storage Panel

Marking Dies

Back View Camera

Aluminium Quick Change Gun

Mechanical Backstop

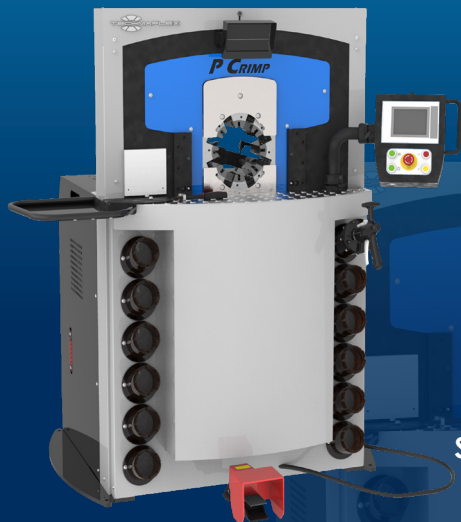
Side Table & Pushing Panel

Die Sets for Brake & Air Conditioning Hoses

Digital Calliper

# P CRIMP 480

ASSEMBLING FOR MASS PRODUCTION  
STAND TYPE CRIMP MACHINE



## KEY FEATURES

- High crimp force
- Large opening
- Safe Crimp System (SCS) control
- Wide family of dies for industrial hoses
- Long master dies
- Robust
- Low noise level

## STANDARD



Quick Change Gun

SCS Safe Crimp System

Mirror

Electrical Footswitch

Die Storage

## TECHNICAL SPECIFICATIONS

### CAPACITY\*

6ms: 3" max.  
Textile & Suction Hose: 4" max.

### CRIMP RANGE

4 - 160 mm (0.157 - 6.299")

### CRIMP FORCE

480 t

### OPENING WITH DIES

+85 mm (+3.346")

### COMPLETE OPENING

212 mm (8.346")

### MASTER DIE LENGTH

125 mm (4.921")

### STANDARD DIES

15, 18, 21, 24, 27, 30, 33, 36, 39, 42, 45, 48, 51, 57, 62, 66, 70, 73, 76

### NOISE LEVEL

<65 dB A

### MOTOR

5.5 kW

### VOLTAGES

220/240 V, 3Ph, 50 Hz  
380/415 V, 3Ph, 50 Hz  
208/240 V, 3Ph, 60 Hz  
380/415 V, 3Ph, 60 Hz

### DIMENSIONS

1300 x 900 x 1700 mm  
(51 x 35 x 67")

### PACKAGING

1400 x 1100 x 1960 mm  
(55 x 43 x 77")

### NET WEIGHT

2200 kg (4850 lb)

### GROSS WEIGHT

2430 kg (5357 lb)

\*Indicative capacities depending on hose and fitting type

## OPTIONAL



Die Storage Panel

Marking Dies

Back View Camera

Aluminium Quick Change Gun

Mechanical Backstop

Side Table & Pushing Panel

Die Sets for Brake & Air Conditioning Hoses

Digital Caliper

# XL CRIMP 800

## ASSEMBLING FOR LARGE BORE HOSES STAND TYPE CRIMP MACHINE



### KEY FEATURES

- Designed for heavy duty large bore hydraulic hoses
- High power and speed
- Ergonomically designed for large bore hoses
- Safe Crimp System (SCS) for maximum reliability during the crimping process
- Large opening up to 8"
- Long master dies
- Very high crimping force

### STANDARD



Electrical Footswitch

Hose Support

SCS Safe Crimp System

### TECHNICAL SPECIFICATIONS

CAPACITY*	MOTOR
4ws: 4" max.	7.5 kW
6ws: 3" max.	VOLTAGES
Industrial: 6"	380/415 V, 3Ph, 50 Hz
CRIMP RANGE	DIMENSIONS
4 - 230 mm (0.157 - 9.055")	1400 x 1400 x 2060 mm
CRIMP FORCE	(55 x 55 x 81")
800 t	NET WEIGHT
OPENING WITH DIES	4300 kg (9480 lb)
+100 mm (+3.937")	GROSS WEIGHT
COMPLETE OPENING	5000 kg (11023 lb)
347 mm (13.661")	TECHNICAL FEATURES
MASTER DIE LENGTH	-Machine platform equipped with rollers to support the hose at working height (1100 mm) in order to handle large bore hoses more easily
180 mm (7.087")	-Supplied as standard: Intermediate dies 250/130
NOISE LEVEL	
< 70 dB A	

\*Indicative capacities depending on hose and fitting type

### OPTIONAL



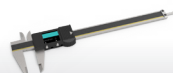
Quick Change Gun



Back View Camera



Die Storage Panel



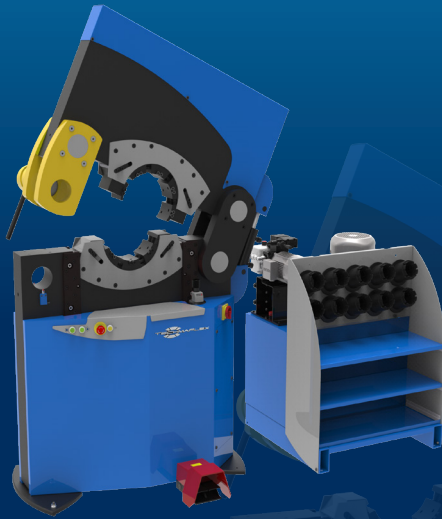
Digital Caliper

# XL CRIMP 320

PESO 320  
XXL WORKSHOP

## KEY FEATURES

- Unique on market
- Lateral opening
- No limit on end connection diameter
- Easy to use
- Separated power pack
- Integrated safety system



## STANDARD



Electrical Footswitch



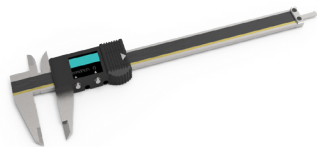
Die Storage

## TECHNICAL SPECIFICATIONS

<b>CAPACITY*</b>	<b>VOLTAGES</b>
Industrial: 6"	230 V, 3 Ph
<b>CRIMP RANGE</b>	400 V, 3 Ph
4 - 230 mm (0.157 - 9.055")	<b>MACHINE DIMENSIONS</b>
<b>CRIMP FORCE</b>	1265 x 680 x 1800 mm
320 t	(50 x 27 x 71")
<b>OPENING WITH DIES</b>	<b>POWER PACK DIMENSIONS</b>
+55 mm (+2.165")	890 x 800 x 1050 mm
<b>COMPLETE OPENING</b>	(35 x 31 x 41")
260 mm (10.236")	<b>MACHINE WEIGHT</b>
<b>LATERAL OPENING</b>	1700 kg (3748 lb)
247 mm (9.724")	<b>POWER PACK WEIGHT</b>
<b>MASTER DIE LENGTH</b>	400 kg (882 lb)
125 mm (4.921")	<b>TECHNICAL FEATURES</b>
<b>MOTOR</b>	-Die sizes available upon request
5.5 kW	

\*Indicative capacities depending on hose and fitting type

## OPTIONAL



Digital Caliper

**XL CRIMP 400**

PE 280  
XXL WORKSHOP



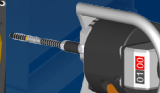
**KEY FEATURES**

- High crimping force
- Ergonomic operation
- Economic solution
- Large opening
- Robust
- Easy set up
- Versatile
- Adjustable crimping working position

**STANDARD**



Remote Control



Ergonomic Micrometer

**TECHNICAL SPECIFICATIONS**

<b>CAPACITY*</b>	<b>MOTOR</b>
Industrial: 6"	5.5 kW
<b>CRIMP RANGE</b>	<b>VOLTAGES</b>
4 - 210 mm (0.157 - 8.268")	230 V, 3 Ph
<b>CRIMP FORCE</b>	400 V, 3 Ph
400 t	<b>DIMENSIONS</b>
<b>OPENING WITH DIES</b>	1100 x 900 x 1550 mm
+50 mm (+1.969")	(43 x 35 x 61")
<b>COMPLETE OPENING</b>	<b>WEIGHT</b>
285 mm (11.221")	750 kg (165 lbs)
<b>MASTER DIE LENGTH</b>	<b>TECHNICAL FEATURES</b>
150 mm (5.906")	-Die sizes available upon request

**OPTIONAL**



Aluminium Quick Change Gun

\*Indicative capacities depending on hose and fitting type

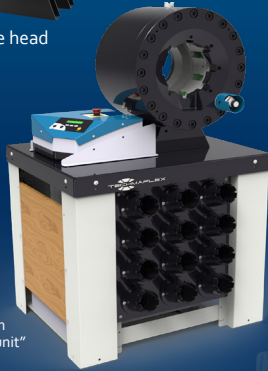


# S CRIMP 450-200/P

XXL WORKSHOP



Version with remote head



Production version with "silent" central unit

## KEY FEATURES

- High crimp force (450 tonnes)
- Large opening
- Wide family of dies for industrial hoses
- Long master dies
- Robust & Ergonomic
- Metallic guard for the set stop
- Separated crimping head allowing flexible workshop arrangements

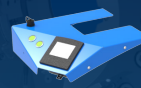
### Production option:

- "silent" central unit with 50 L tank
- Table with racks EVO
- 3 control panels available

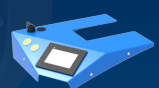
## CONTROL OPTIONS AVAILABLE ON REQUEST



SC



SCE



SCS

## TECHNICAL SPECIFICATIONS

<b>CAPACITY*</b>	<b>MOTOR</b>
Industrial: 4" & 6"	5.5 kW
<b>CRIMP RANGE</b>	<b>VOLTAGES</b>
4 - 180 mm (0.157 - 7.087")	220/240 V, 3Ph, 50 Hz
<b>CRIMP FORCE</b>	380/415 V, 3Ph, 50 Hz
450 t	208/240 V, 3Ph, 60 Hz
<b>OPENING WITH DIES</b>	380/415 V, 3Ph, 60 Hz
+70 mm (+2.755")	<b>DIMENSIONS</b>
<b>MASTER-DIES OPENING**</b>	830 x 775 x 1450 mm
270 mm (10.629")	(33 x 31 x 57")
<b>MASTER DIE LENGTH</b>	<b>PACKAGING</b>
125 mm (4.921")	1120 x 1020 x 1770 mm
<b>STANDARD DIES</b>	(44 x 40 x 70")
15, 18, 21, 24, 27, 30, 33, 36, 39, 42, 45, 48, 51, 57, 62, 66, 70, 73, 76; Dies up to 180 mm available on request	<b>NET WEIGHT</b>
	450 kg (992 lb)
	750 kg (pro version)

\*Indicative capacities depending on hose and fitting type

\*\* Full passage 230 mm

## OPTIONAL



Die Storage Panel



Die Storage Table EVO



Quick Change Gun



Aluminium Quick Change Gun



Electrical Footswitch



Marking Dies



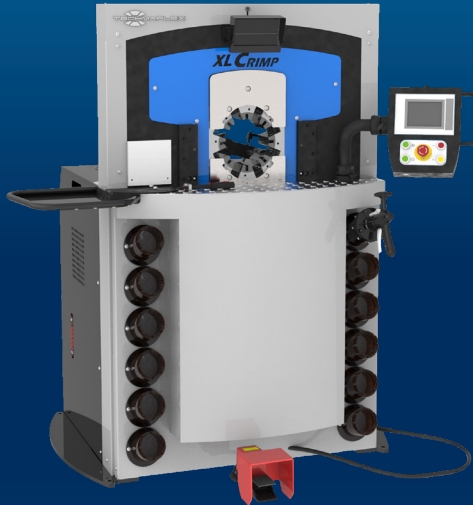
Die Sets for Brake & Air Conditioning Hoses



Digital Caliper

# XL CRIMP 450

## 8" HOSE CRIMPER



### KEY FEATURES

- High crimping force
- Large opening for hoses up to 8" with #150 flanges
- Bottom master die is fixed for ease of crimping large hoses
- Diameter adjustment is controlled by SCS
- Possibility to install eccentric and/or deformed dies

### STANDARD



SCS Safe Crimp System

### TECHNICAL SPECIFICATIONS

<b>CAPACITY*</b>	<b>COMPLETE OPENING</b>
Industrial: 8"	350 mm (13.779")
<b>MAX CRIMPING DIAMETER</b>	<b>MAXIMUM DIE LENGTH</b>
300 mm (11.811") (with special dies)	140 mm (5.512")
<b>CRIMP FORCE</b>	<b>GROSS WEIGHT</b>
450 t	2900 kg (6393 lb)
<b>OPENING WITH DIES</b>	<b>TECHNICAL FEATURES</b>
+ 130 mm (5.118")	-Die sizes available upon request

\*Indicative capacities depending on hose and fitting type

### OPTIONAL



Aluminium Quick Change Gun



Quick Change Gun



Electrical Footswitch



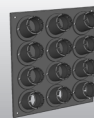
Mirror



Digital Caliper



Back View Camera



Die Storage Panel

**XL CRIMP 550/XL CRIMP 550-16**

XXL WORKSHOP



**KEY FEATURES**

- Very large opening
- Fixed bottom die
- Long dies available
- High crimping force
- Symmetric machine
- Low working height
- Ergonomic
- Safe Crimp System (SCS)
- Step crimping capability with SCS

**STANDARD**



SCS Safe Crimp System



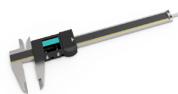
Die Storage

**TECHNICAL SPECIFICATIONS**

	XL CRIMP 550	XL CRIMP 550-16
<b>CAPACITY*</b>	Industrial: 12"	Industrial: 16"
<b>CRIMP FORCE</b>	550 t	550 t
<b>COMPLETE OPENING</b>	490 mm (19.291")	660 mm (25.984")
<b>OPENING WITH DIES</b>	+130 mm (+5.118 ")	+160 mm (6.299")
<b>MASTER DIE LENGTH</b>	200 mm (7.874")	200 mm (7.874")
<b>MOTOR</b>	5.5 kW	5.5 kW
<b>VOLTAGES</b>	230 V, 3 Ph 400 V, 4 Ph	230 V, 3 Ph 400 V, 4 Ph
<b>MACHINE DIMENSIONS</b>	1300 x 1050 x 2230 mm (35 x 41 x 88")	1450 x 1100 x 2300 mm (57 x 43 x 91")
<b>POWER PACK DIMENSIONS</b>	800 x 790 x 1650 mm (31 x 31 x 65")	800 x 790 x 1650 mm (31 x 31 x 65")
<b>MACHINE WEIGHT</b>	4000 kg (8818 lb)	4300 kg (9480 lb)
<b>POWER PACK WEIGHT</b>	500 kg (1102 lb)	500 kg (1102 lb)
<b>TECHNICAL FEATURES</b>	Die sizes available upon request	

\*Indicative capacities depending on hose and fitting type

**OPTIONAL**



Digital Caliper

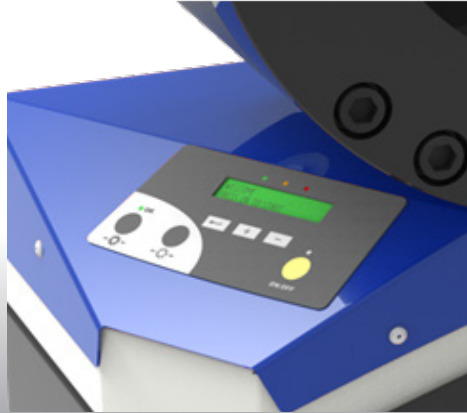
## ACCESSORIES AND TOOLS

### SAFE CRIMP (SC) SMART CONTROL PANEL

A basic smart control panel, which includes maintenance functions essential for keeping the machine in good condition.

**Maintenance functions include:**

- **2 Counters:** 1 daily counter and 1 machine cycle counter
- **3 LED Indicator Lights:** 1 for daily maintenance, 1 for advanced maintenance and 1 for expert maintenance
- **Semi-automatic function:** The semi-automatic opening is ideal for serial assemblies as it can be adjusted specifically to allow the fitting to pass through the dies with minimal clearance, saving energy by reducing the cycle time.

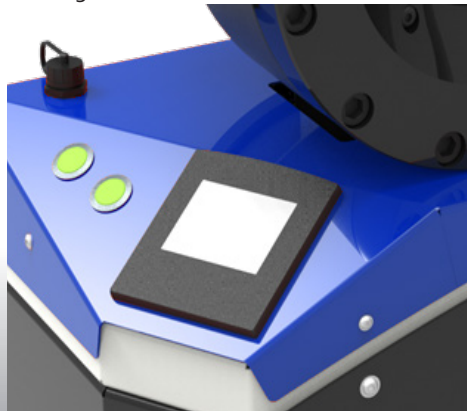


### SAFE CRIMP ELECTRICAL PANEL (SCE)

A modern touch screen with electronic buttons, which includes maintenance functions essential for keeping the machine in good condition.

**Maintenance functions include:**

- **Functions of the Safe Crimp Panel**
- **Electronic micrometer** with the ability to save up to 75 configurations and automatic die selection
- **Caliper option** for automatic correction of the crimping diameter



## ACCESSORIES AND TOOLS

## SAFE CRIMP SYSTEM (SCS)



## Benefits of Safe Crimp System control for hose assembly activity:

- Friendly and easy setting of crimping parameters including:
  - > Pre-set of crimp  $\varnothing$  calibration to compensate ferrule elastic rebound
  - > Reminder of dies to be used
  - > Easy automatic opening setting
- Storage of recurrent and customised crimp recipes: favourite crimp assemblies:
  - > Short cuts for faster setting
  - > No crimp  $\varnothing$  re-adjusting
  - > Possibility to download your customised recipes by USB port and save on separate computer (CSV file)
- Production counter for batch quantity control:
  - > Quality monitoring by: Automatic crimp  $\varnothing$  check (Only available on 7" screen)
  - > Continuous crimp pressure measurement (Option on 4.5" screen)
  - > Crimping pressure and count control for mistake proofing assembly (Option 4.5" screen)
- Operator identification (Log in / log out)
- Maintenance Warnings

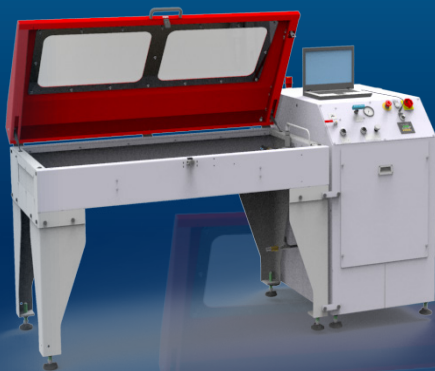


## S TEST 2000 L

TEST BENCH, PROOF PRESSURE & CERTIFY  
STAND TYPE MACHINE

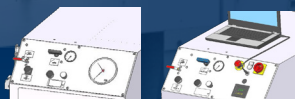
## KEY FEATURES

- Easy to use and robust
- Safe: Steel Compartment, polycarbonate transparent window and metal mesh
- Large testing area for up to 6 hoses
- Variable pressure up to 2000 bar



Model shown L (small tank)

## STANDARD



Power Unit M

Power Unit E

## TECHNICAL SPECIFICATIONS

## INDICATIVE CAPACITY

3/16" - 2"

## HOSE CONNECTION

6 maximum

## AIR CONSUMPTION

1000 L/min

## OPENING/CLOSING TIME

10-14 seconds

## MAX PRESSURE

2000 bar (29000 psi)

## INNER TANK CAPACITY

1700 x 790 x 200 mm  
(67 x 31 x 8")

## DIMENSIONS (PANEL)

700 x 1200 x 1220 mm  
(28 x 47 x 48")

## PACKAGING (TANK)

1600 x 1200 x 1280 mm  
(63 x 47 x 50")

## PACKAGING (PANEL)

1000 x 1200 x 1280 mm  
(39 x 47 x 50")

## NET WEIGHT

430 kg (948 lb)

## GROSS WEIGHT

500 kg (1102 lb)

## TECHNICAL FEATURES

- Minimum compressed air  
input 8.5 bar (123 psi)

## FEATURES AND OPTIONS

## DISPLAY FEATURES

- M** Gauge measurement display
- E** Numerical measurement display with USB connection for computer report and light

## FURTHER OPTIONS

- Autonomous filling pump
- Air blowing system for both models

# S TEST 2000 XL

TEST BENCH, PROOF PRESSURE & CERTIFY  
STAND TYPE MACHINE



Model shown XL ISD

## KEY FEATURES

Easy to use and robust

Safe: Steel Compartment, polycarbonate transparent window and metal mesh

Large testing area for up to 6 hoses

Variable pressure up to 2000 bar

## TECHNICAL SPECIFICATIONS

### INDICATIVE CAPACITY

3/16" - 2"

### HOSE CONNECTION

6 maximum

### AIR CONSUMPTION

1000 L/min

### OPENING/CLOSING TIME

10-14 seconds

### MAX PRESSURE

2000 bar (29000 psi)

### INNER TANK CAPACITY

1400 x 900 x 600 mm  
(55 x 35 x 24")

### DIMENSIONS (PANEL)

700 x 1200 x 1220 mm  
(28 x 47 x 48")

### PACKAGING (TANK)

1600 x 1200 x 1280 mm  
(63 x 47 x 50")

### PACKAGING (PANEL)

1000 x 1200 x 1280 mm  
(39 x 47 x 50")

### NET WEIGHT

500 kg (1102 lb)

### GROSS WEIGHT

600 kg (1323 lb)

### TECHNICAL FEATURES

- Minimum compressed air input 8,5 bar (123 psi)  
- Minimum test pressure 250 bar (3626 psi), with low pressure option 50 bar (725 psi) (only for XL ISD)

## FEATURES AND OPTIONS

### STANDARD OPTIONS

#### XL ISD:

- Light included
- Touch screen panel
- Printer

#### XL E:

- Light included
- Numerical measurement display with USB connection for computer report.

### FURTHER OPTIONS

- Autonomous filling pump
- Air blowing system for both models

# TUBE APPLICATIONS



## POSSIBLE APPLICATIONS

**ECOVERSION** - after-market manufacturers

**PROVERSION** - OEM manufacturers



Tube stacking



Tube reduction before drawing



Assembling



Geometrical deformation



Calibration



Insulator

**Activities:**  
Greenhouse, scaffolding, urban furniture, playground equipment, hand rails, mechanical construction, furniture, etc.



Cement Rods

## AVAILABLE OPTIONS



Mechanical Set Stop\*



Crimp Head



Special Hydraulic Power Pack



Oil Cooling System



Foot Pedal



Central Greasing System



Computer\*\*

\*Accuracy and repeatability optimized

\*\*Pressure and diameters controls, data storage to save recipes, assembly by step, alert maintenance



# AUTOMOTIVE APPLICATIONS



## POSSIBLE APPLICATIONS



Air Spring



Part calibration - shock absorbers, pulleys



A/C, brake hoses, control cables



Automotive pipe



Airbag inflators

## AVAILABLE OPTIONS



Mechanical Set Stop



Crimp Head



Special Hydraulic Power Pack



Foot Pedal



Central Greasing System



Oil Cooling System



Computer\*\*

\*Accuracy and repeatability optimized

\*\*Pressure and diameters controls, data storage to save recipes, assembly by step, alert maintenance



[www.techmaflex.com](http://www.techmaflex.com)

Copyright 2022 Techmaflex. All rights reserved.  
All product names are either trademarks or registered trademarks of  
Techmaflex unless otherwise stated



Manuli Hydraulics France SAS - Techmaflex  
7 Chemin des Fontenelles - 44140 LE BIGNON, FRANCE  
Tel. +33 (0)2 40 03 05 01  
Email: [info@techmaflex.com](mailto:info@techmaflex.com)