



S CRIMP 137 EVO R

ROTATING HEAD BENCHTOP CRIMPER
FOR MAINTENANCE WORKSHOPS

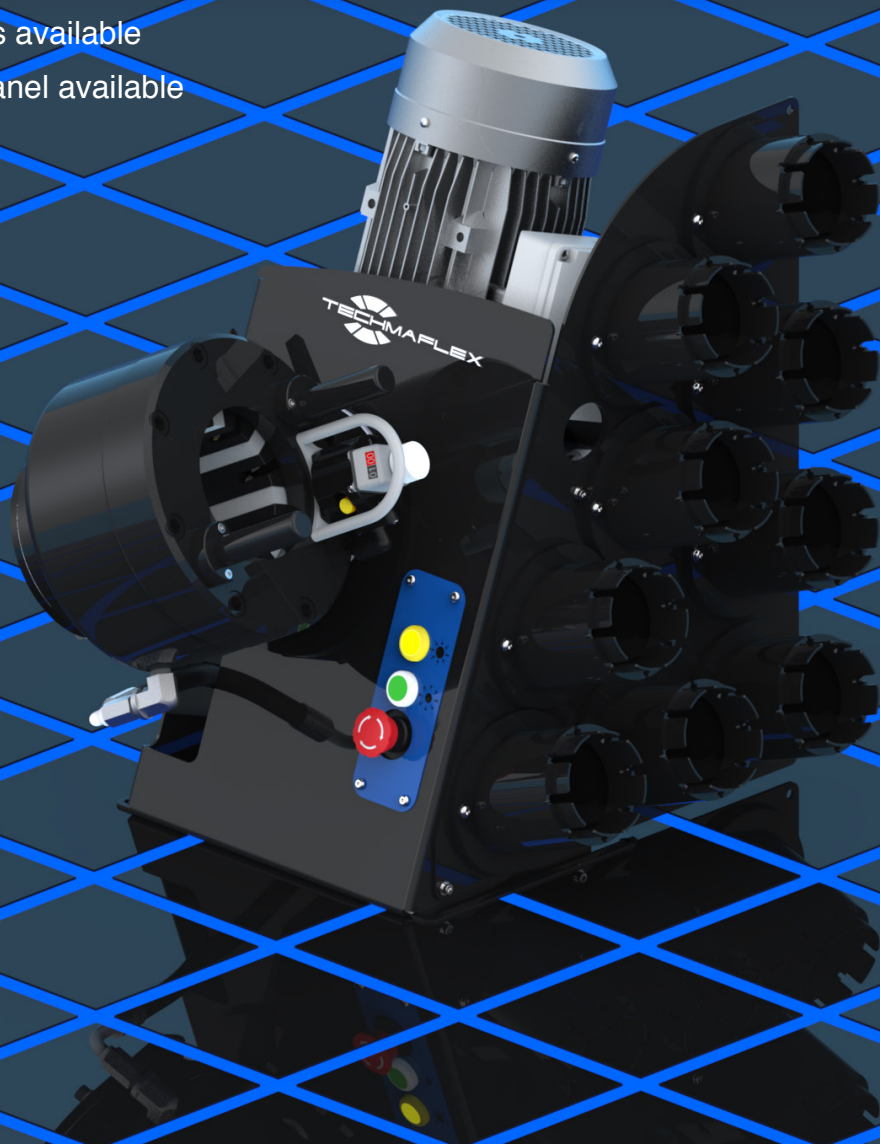
Designed specifically for maintenance workshops and on-site repairs, the S CRIMP 137 EVO R is a compact, ergonomically designed crimping machine which features an adjustable head for maximum ease of use. The rotating crimping head can be positioned vertically, horizontally or any position in between thanks to its innovative design and tool-free locking mechanism.

Suitable for 4 wire-spiral hoses up to 1¼", the S CRIMP 137 EVO R is a versatile addition to any low-medium volume repair and maintenance operation. Supplied with an ergonomic quick-change gun for die installation and removal, the S CRIMP 137 EVO R can also be fitted with an optional die storage panel (as shown below) making it even more efficient to use.

The S CRIMP 137 EVO R also has a wide range of die-sets available, ranging from size 6 through to size 51. Available die-set sizes correspond with the sizes listed in the official crimping charts of prominent hose manufacturers, helping to ensure error-free crimping.

FEATURES

- Ergonomically positioned adjustable crimping head
- Axis of crimping head oriented perpendicular to the operator
- Optional quick change tool for dies available in Plastic or Aluminium
- Compact design
- Range of standard dies available
- Optional die storage panel available



TECHNICAL SPECIFICATIONS

DIMENSIONS	470 x 630 x 644 mm (19 x 25 x 25")	NOISE LEVEL	70 dB A
NET WEIGHT	89 kg (196 lb)	CRIMP RANGE	6 to 56 mm (0.517 - 2.205")
GROSS WEIGHT	105 kg (231 lb)	CRIMP FORCE	137 t
VOLTAGES	110 V, 1Ph, 60 Hz 220/240 V, 1 Ph, 50 Hz 380/415V, 3 Ph + N, 50 Hz	OPENING WITH DIES	+28 mm (+1.102")
CAPACITY	2wb: 1¼" max. 4ws: 1¼" max.	COMPLETE OPENING	100 mm (3.937")
MOTOR	1.5 kW (110V), 2.2 kW (230V)	MASTER DIE LENGTH	75 mm (2.953")
		STANDARD DIES	15, 18, 21, 24, 27, 30, 33, 36, 39, 42, 45, 48, 51

ORDERING INFORMATION	
PRODUCT CODE	DESCRIPTION
EOA3223NTSCRI137ER	S CRIMP 137 EVO R 220/240V 1PH 50HZ
EOA3224NTSCRI137ER	S CRIMP 137 EVO R 380/415V 3PH+N 50HZ
EOA3225NTSCRI137ER	S CRIMP 137 EVO R 110V 1PH 60HZ
EOA3227NTSCRI137ER	S CRIMP 137 EVO R 220/240V 3PH 50HZ
EOA3228NTSCRI137ER	S CRIMP 137 EVO R 220/240V 1PH 60HZ
EOA3229NTSCRI137ER	S CRIMP 137 EVO R 208/240V 3PH 60HZ
YKM-21-1-181501	DIE STORAGE PANEL S CRIMP 137 EVO R
ESA3220N137EQCG	EG QUICK CHANGE TOOL PLASTIC
ESA3220N137QCG	SRC QUICK CHANGE TOOL ALUMINIUM

AVAILABLE DIE SETS						
PRODUCT CODE	DESCRIPTION	N°	CRIMP RANGE	DIE LENGTH (MM)	DIE LENGTH (INCH)	
ESA3220NL56-6	DIE SET N. 6 - LENGTH 56 MM	6	06-08	56	2.205	
ESA3220NL56-8	DIE SET N. 8 - LENGTH 56 MM	8	08-10	56	2.205	
ESA3220NL56-10	DIE SET N. 10 - LENGTH 56 MM	10	10-12	56	2.205	
ESA3220NL56-12	DIE SET N. 12 - LENGTH 56 MM	12	12-15	56	2.205	
ESA3220NL56-15	DIE SET N. 15 - LENGTH 56 MM	15	15-18	56	2.205	
ESA3220NL56-17	DIE SET N. 17 - LENGTH 56 MM	17	17-18	56	2.205	
ESA3220NL56-18	DIE SET N. 18 - LENGTH 56 MM	18	18-21	56	2.205	
ESA3220NL56-20	DIE SET N. 20 - LENGTH 56 MM	20	20-21	56	2.205	
ESA3220NL56-21	DIE SET N. 21 - LENGTH 56 MM	21	21-24	56	2.205	
ESA3220N137-24	DIE SET N. 24 - LENGTH 56 MM	24	24-27	56	2.205	
ESA3220N137-27	DIE SET N. 27 - LENGTH 56 MM	27	27-30	56	2.205	
ESA3220N137-30	DIE SET N. 30 - LENGTH 56 MM	30	30-33	56	2.205	
ESA3220N137-33	DIE SET N. 33 - LENGTH 70 MM	33	33-36	70	2.756	
ESA3220N75-36	DIE SET N. 36 - LENGTH 75 MM	36	36-39	75	2.953	
ESA3220N137-39	DIE SET N. 39 - LENGTH 70 MM	39	39-42	70	2.756	
ESA3320N140-42	DIE SET N. 42 - LENGTH 70 MM	42	42-45	70	2.756	
ESA3220N137-45	DIE SET N. 45 - LENGTH 70 MM	45	45-48	70	2.756	
ESA3220N137-48	DIE SET N. 48 - LENGTH 70 MM	48	48-51	70	2.756	
ESA3220N137-51	DIE SET N. 51 - LENGTH 75 MM	51	51-57	75	2.953	
ESA3220N137KT	KIT 10 DIES S CRIMP 137 EVO R (N.15 TO N.48)	-	-	-	-	
ESA3220N137KT9J	KIT 9 DIES S CRIMP 137 EVO R (N.15 TO N.48)	-	-	-	-	
ESA3220NKIT6J	KIT 6 DIES S CRIMP 137 EVO R (N.15 TO N.39)	-	-	-	-	
ESA3220N137KTF	KIT 13 DIES S CRIMP 137 EVO R (N.15 TO N.51)	-	-	-	-	

REMARKS



- Refrigeration hose special dies available upon request
- Performances measured on a 400 V, 3Ph, 50 Hz network