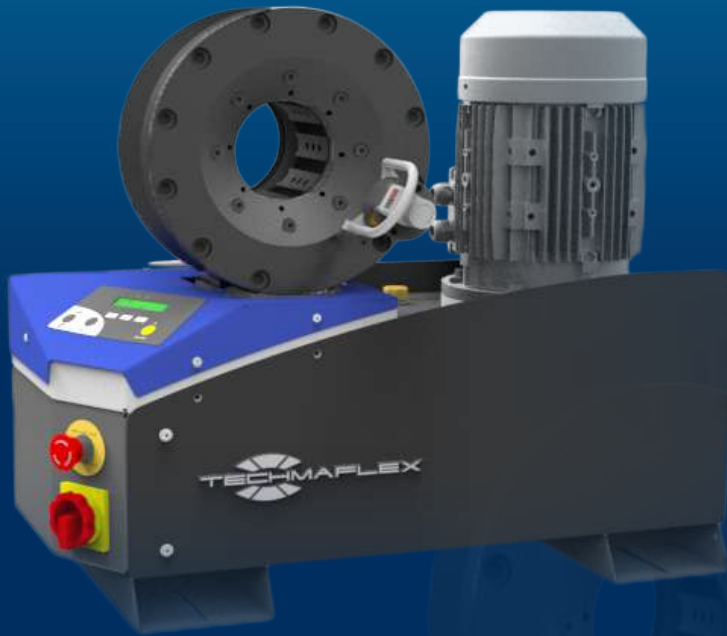


TUBCRIMP 108 ECO



KEY FEATURES

- Compact
- Low-noise technology
- Easy adjustment
- Visibility
- Ergonomics
- Rapid change of tools
- Smart control panel
- Radial movement
- Precise positioning of the tools

TECHNICAL SPECIFICATIONS

CRIMP RANGE	CYCLE TIME
4 - 66 mm (0.157 - 2.598")	10 s
CRIMP FORCE	MAX WORKING PRESSURE
130 t	280 bar (4061 psi)
COMPLETE OPENING	VOLUME RATIO OF CHAMBERS
108 mm (4.252")	8
OPENING WITH DIES	NOISE LEVEL
+28 mm (1.102")	68 dB A
MASTER DIE LENGTH	DIMENSIONS
104 mm (4.094")	765 x 400 x 750 mm (30 x 16 x 30")
DIAMETER WITH CLOSED MASTER DIES	WEIGHT (WITH OIL)
80 mm (3.150")	165 kg (364 lb)
MOTOR	
4 kW	
PUMP FLOW	
9 L/min	

OPTIONAL

