

S SKIVE 100

SMALL SERVICE WORKSHOP
BENCHTOP SKIVING



KEY FEATURES

- Plug'n skive system
- Compact & stable
- Safety switch on the cover
- Good visibility
- Tool storage included
- Foot pedal drive with emergency stop
- 2-way rotation

STANDARD



CME Electrical Footswitch

TECHNICAL SPECIFICATIONS

CAPACITY

2wb: 2" max.
4ws: 2" max.

ROTATION SPEED

100 rpm

MOTOR

0.25 kW

VOLTAGES

220/240 V, 1Ph, 50 Hz
380/415 V, 3Ph, 50 Hz
220/240 V, 1Ph, 60 Hz
380/415 V, 3Ph, 60 Hz

DIMENSIONS

500 x 660 x 360 mm
(19 x 26 x 14")

PACKAGING

800 x 600 x 700 mm
(31 x 24 x 28")

NET WEIGHT

45 kg (99 lb)

GROSS WEIGHT

55 kg (121 lb)

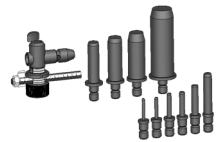
TECHNICAL FEATURES

Tools available (to be ordered separately)
ESE, IS, ESP1, ESP2

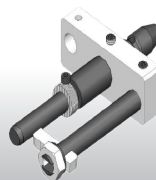
OPTIONAL



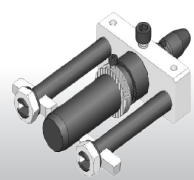
Tool Kit IS



Tool Kit ESE



Tool Kit ESP 1



Tool Kit ESP 2