

S CUT 30 E

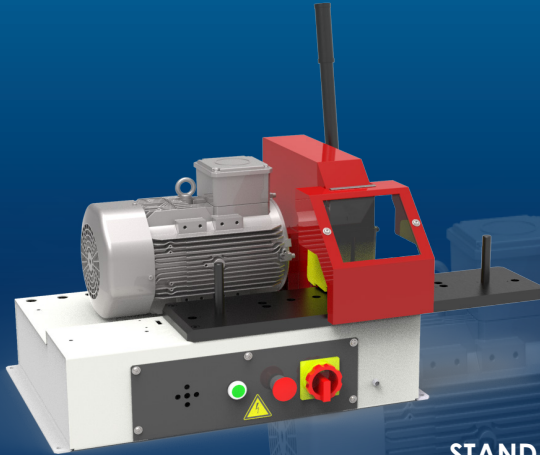
STARTER & PROFESSIONAL WORKSHOP
BENCHTOP CUTTING MACHINE, OPTIONAL SKIVING

KEY FEATURES

Compact design

Easy and safe to use

Versatile, scalloped blade for high performance and efficient cutting with minimal smoke



STANDARD



Scalloped Blade



Dust Collector

TECHNICAL SPECIFICATIONS

CAPACITY

- 2wb: 2" max.
- 4ws: 2" max.
- 6ws: 1¼" max.
- Industrial: 2" max.

ROTATION SPEED

3000 rpm

SCALLOPED BLADE DIAMETER

300 mm (11.8")

MAX HOSE OD.

85 mm (3.346")

MOTOR

3.0 kW

VOLTAGES

- 220/240 V, 3Ph, 50 Hz
- 380/415 V, 3Ph, 50 Hz
- 208/240 V, 3Ph, 60 Hz
- 380/415 V, 3Ph, 60 Hz

DIMENSIONS

835 x 545 x 640 mm
(33 x 21 x 25")

PACKAGING

1170 x 770 x 1100 mm
(46 x 30 x 43")

NET WEIGHT

75 kg (165 lb)

GROSS WEIGHT

90 kg (198 lb)

OPTIONAL



Cutting Rail