

# HOSE ASSEMBLY MACHINES

GENERAL HYDRAULICS



**The assembly moves with us.**





**TECHMAFLEX, A LEADER  
IN HOSE ASSEMBLY TECHNOLOGY  
SINCE 1987**

From being founded in 1987, Techmafex has become known for the quality and reliability of its benchtop equipment and crimping solutions. Today, Techmafex is a leader in Europe on benchtop crimping and its supporting equipment range. Techmafex has grown globally with an established equipment range for portable equipment, benchtop equipment, OEM level and Industrial hose applications. Techmafex has worked closely with a hose and fitting manufacturer to ensure the equipment meets the toughest demands of the hose industry. This alliance has allowed Techmafex to design machines perfectly suited for hose assemblers in all industries.

Now established with offices in North America, Asia, Russia, and manufacturing in Europe, Techmafex has established a global network to support our customers with prompt service and support for all equipment.

Techmafex continues to innovate in order to serve the expanding market with reliable, hard working equipment and unbeatable service. When you decide on your next line of equipment, look for the "Original Techmafex" Stamp to ensure you have the best so you can make the best.

In continuity with our innovation , we have decided to rename all our machines to better suit their application.



**Contents page**

Starter workshop.....	p.4/5	XL Crimp 550.....	p.33
Professional workshop .....	p.6/7	S Cut 22/V Cut 22 .....	p.34
Full service workshop.....	p.8/9	S Duo 30.....	p.35
Field service & Mobile workshop 12V/24V....	p.10/11	S Cut 55/S Cut 30 .....	p.36
Container line .....	p.12/13	P Cut 90 .....	p.37
Expert service line .....	p.14/15	S Skive 100 / H Skive .....	p.38
XXL workshop .....	p.16/17	P Skive 205 .....	p.39
H Crimp 80.....	p.18	Complementary products .....	p.40/41
H Crimp 137 .....	p.19	Notes .....	p.42
S Crimp 137.....	p.20	Machine data table .....	p.43
S Crimp 240 .....	p.21	Other documentations.....	p.44
S Crimp 350/350L .....	p.22		
OPTIONS.....	p.23		
V Crimp 137.....	p.24		
V Crimp 240 / 350.....	p.25		
N Crimp 70/N Crimp 80.....	p.26		
P Crimp 240 .....	p.27		
P Crimp 320 .....	p.28		
P Crimp 480 .....	p.29		
XL Crimp 400.....	p.30		
XL Crimp 320.....	p.31		
XL Crimp 800.....	p.32		

**CRIMPING  
CUTTING  
SKIVING  
MARKING  
TESTING**





## STARTER WORKSHOP

Ideal for workshops servicing agricultural, light construction, public works, forestry, transport and industrial equipment. Economical, easy to use and with a capacity of 1 1/4", it meets your daily demands. This equipment allows you to be reactive and autonomous with your customer's needs.



### S Crimp 137 p.20

- Capacity: 1" 1/4 4SP
- Ergonomic micrometer
- Compact head
- Die storage included
- Multiple voltage options
- Accurate
- Easy to move
- Cylinder protection
- Easy die set up

### S Cut 22 p.34

- Capacity: 1" 1/4 4SP
- Smooth bending system
- 90° cut
- Clean cut
- Scalloped blade
- Dust collector included
- Multiple voltage options

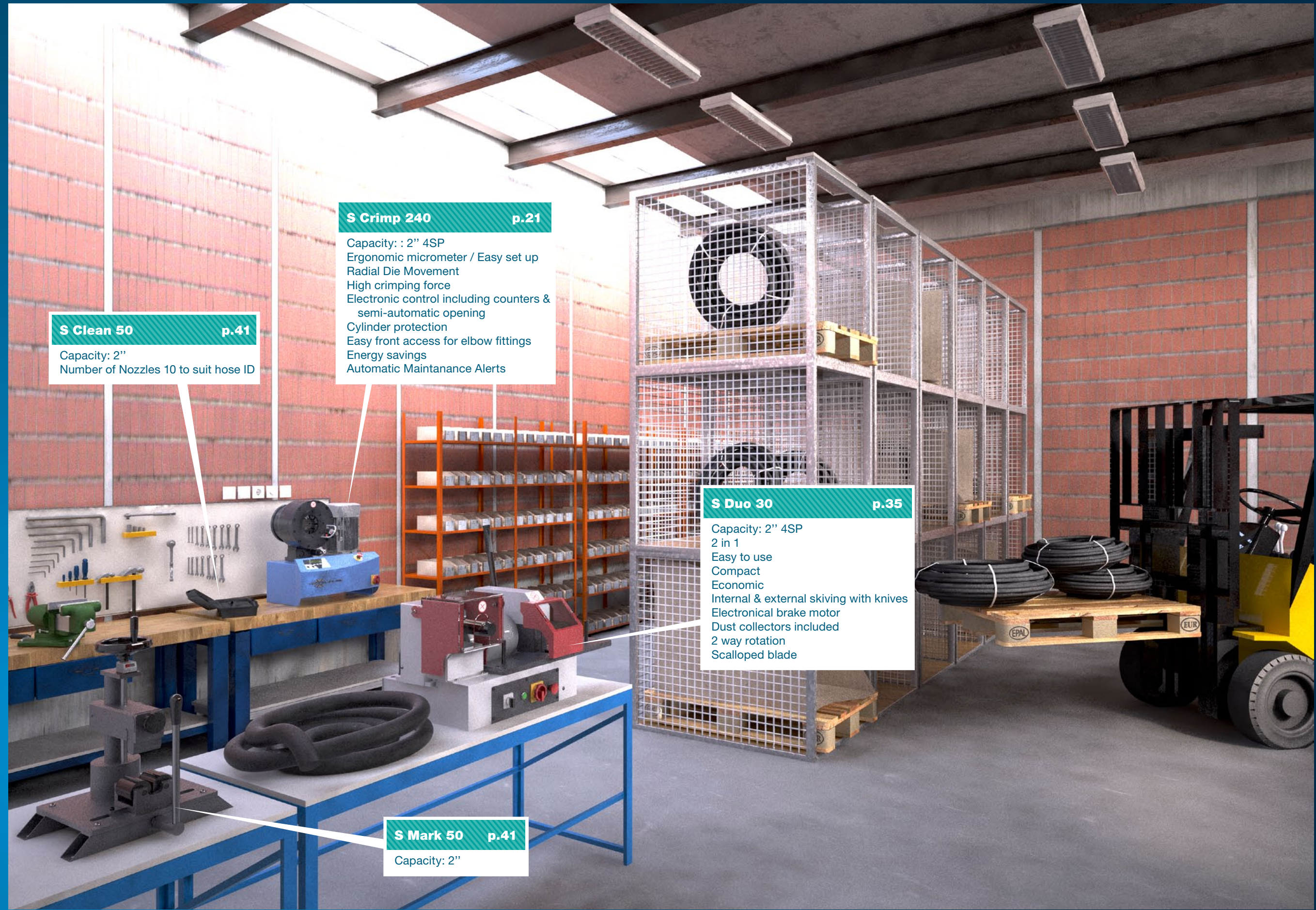
### H Skive p.38

- Capacity: 2"
- Economic
- Simple
- Compact
- Robust
- Plug'n skive system



# PROFESSIONAL WORKSHOP

Dedicated to maintenance specialists, dealers and small OEM's serving industry, public works, trucks, lifting, construction and agriculture. Its capacity to 2" 4SP allows you to answer many requests and ensures high production autonomy. The quality of the hose assemblies will reinforce your image and your reputation toward a large panel of customers. This investment guarantees sustainability and profitability of your business.



**S Clean 50** p.41  
Capacity: 2"  
Number of Nozzles 10 to suit hose ID

**S Crimp 240** p.21  
Capacity: : 2" 4SP  
Ergonomic micrometer / Easy set up  
Radial Die Movement  
High crimping force  
Electronic control including counters & semi-automatic opening  
Cylinder protection  
Easy front access for elbow fittings  
Energy savings  
Automatic Maintenance Alerts

**S Duo 30** p.35  
Capacity: 2" 4SP  
2 in 1  
Easy to use  
Compact  
Economic  
Internal & external skiving with knives  
Electronical brake motor  
Dust collectors included  
2 way rotation  
Scalloped blade

**S Mark 50** p.41  
Capacity: 2"



## FULL SERVICE WORKSHOP

Power, robustness and reliability make it the best package recognized by maintenance specialists in heavy equipment, repair stores and medium OEM. Its capacity of 2" 6SP and 4" on industrial hoses is ideal for companies working in maintenance for mining, drilling, ports, steel mills, petrochemical and public works.



### S Cut 55 p.36

- Capacity: 2" 6SP
- Smoke free
- Digital counters included
- Maintenance control
- Feeding guides
- Ergonomic design
- Comfortable
- Large and double pedal
- Scalloped blade
- Mobile

### P Skive 205 p.39

- Capacity: 3"
- Plug'n skive system
- Large dust collector
- Robust & easy adjustable knife
- High capacity
- Fast
- 2 way rotation

### S Push 1500 p.40

Capacity: all hydraulic hoses from 3/4" up to 2" Interlock

### S Crimp 350 p.22

- Capacity: : 2" 6SP - 4" Industrial
- High power & large opening in a very compact design
- Ergonomic micrometer
- Radial die movement
- Electronic control including counters & semi-automatic opening
- Cylinder protection
- Groove for 90° long drop
- Large die available for industrial hoses
- High flow pump
- Energy savings
- Automatic maintenance alerts
- Easy set up

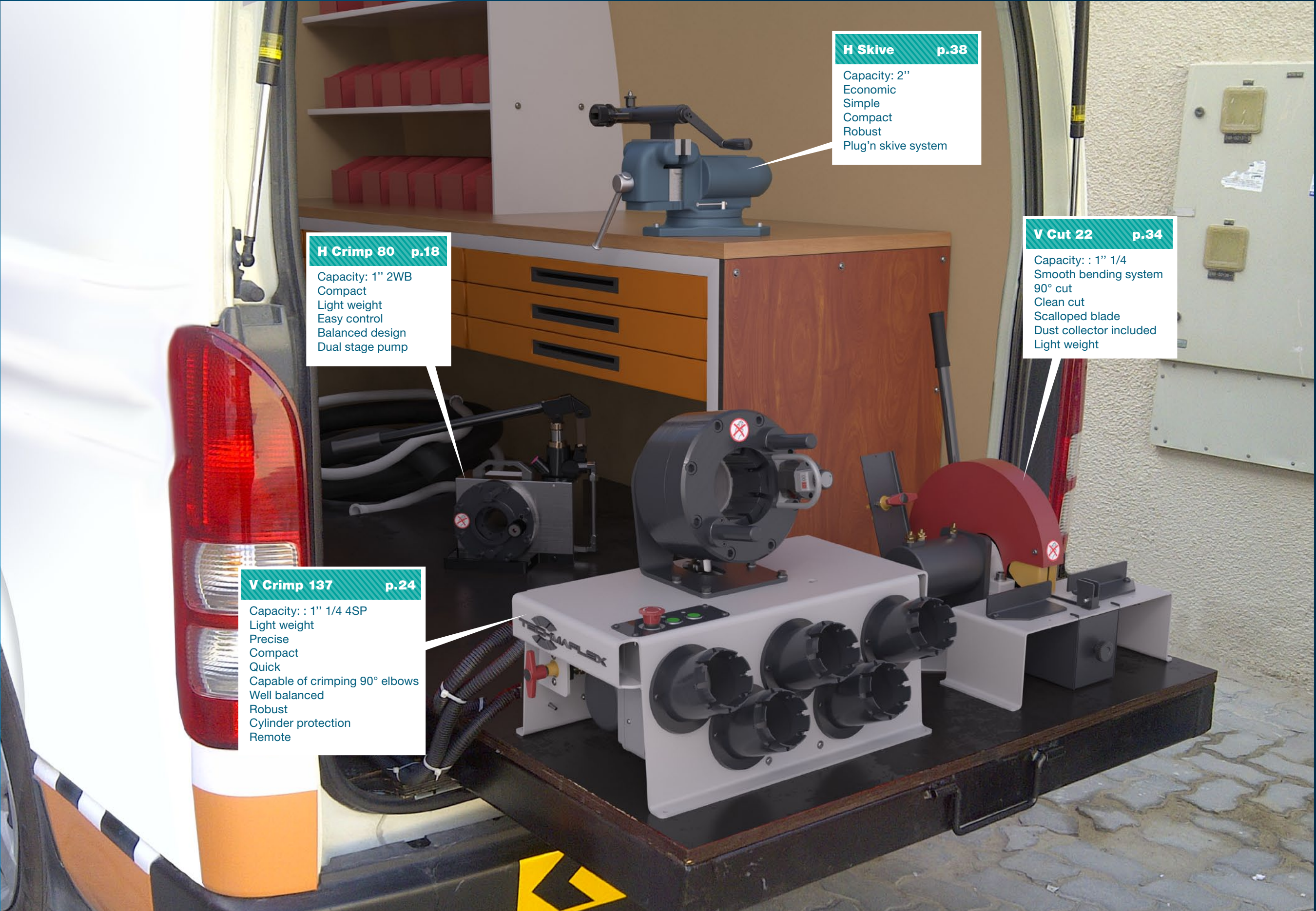
### S Mark 50 p.41

Capacity: 2"



**FIELD SERVICE  
& MOBILE  
WORKSHOP  
12V/24V**

A compact and robust line up to 2", perfect for on-site repair. The hand crimper, H Crimp 80 (PM 18), offers accessibility to all sites. A complete 12V line delivers hose assembly quality equal to the one obtained in workshop.



**H Skive p.38**  
Capacity: 2"  
Economic  
Simple  
Compact  
Robust  
Plug'n skive system

**H Crimp 80 p.18**  
Capacity: 1" 2WB  
Compact  
Light weight  
Easy control  
Balanced design  
Dual stage pump

**V Cut 22 p.34**  
Capacity: : 1" 1/4  
Smooth bending system  
90° cut  
Clean cut  
Scalloped blade  
Dust collector included  
Light weight

**V Crimp 137 p.24**  
Capacity: : 1" 1/4 4SP  
Light weight  
Precise  
Compact  
Quick  
Capable of crimping 90° elbows  
Well balanced  
Robust  
Cylinder protection  
Remote



## CONTAINER LINE

The performance of our machines in mining, steel mills, drilling and public works gathered in a container. The capacities of this package will guarantee autonomy in the most remote places. The smoke suction integrated to the cutting machine ensures a clean and safe working environment.

### P Skive 205 p.39

Capacity: 3"  
Plug'n skive system  
Large dust collector  
Robust & easy adjustable knife  
High capacity  
Fast  
2 way rotation

### S Cut 55 p.36

Capacity: 2" 6SP  
Smoke free  
Digital counters included  
Maintenance control  
Feeding guides  
Ergonomic design  
Comfortable  
Large and double pedal  
Scalloped blade  
Mobile

### S Crimp 350 p.22

Capacity: 2" 6SP - 4" Industrial  
High power & large opening in a very compact design  
Ergonomic micrometer  
Radial die movement  
Electronic control including counters & semi-automatic opening  
Cylinder protection  
Groove for 90° long drop  
Large die available for industrial hoses  
High flow pump  
Energy savings  
Automatic maintenance alerts  
Easy set up

### S Mark 50 p.41

Capacity: 2"

### H Crimp 137 p.19

Capacity: 1" 1/4 4SP  
High capacity  
Narrow head  
Audio-Visual Signal  
350 bar technology more robust & reliable than 700 bar  
Large opening



## EXPERT SERVICE LINE

Result of our collaboration with OEM assemblers and hose manufacturers, our expert workshop combines power, reliability, speed, openness and comfort. Techmafex is now the most innovative manufacturer in machines dedicated to OEM, for instance: «i-crimp system» which guarantees a constant control of hose assemblies.



### S Push 1500 p.40

Capacity: all hydraulic hoses from 3/4" up to 2" Interlock

### P Cut 90 p.37

Capacity: 3" 6SP  
Very powerful  
Heavy duty for difficult cuts  
Hydraulic bending  
Large blade  
Electronic soft start

### P Skive 205 p.39

Capacity: 3"  
Plug'n skive system  
Large dust collector  
Robust & easy adjustable knife  
High capacity  
Fast  
2 way rotation

### P Crimp 480 p.29

Capacity: : 3" 6SP  
High crimping force  
Large opening  
Large dies available for industrial hoses  
Easy die set up with ergonomic gun  
Long master-dies  
Robust  
Optional « I-crimp » quality control system



## XXL WORKSHOP

A workshop developed on a complete range of Industrial crimpers combining power, openness, ergonomics and solutions for handling large diameters. This workshop increases your potential of opportunities. It allows you to prospect many and various markets and thus amortize your investment quickly. Our knowledge of the activity constraints led us to offer ergonomic solutions adapted to the handling of large diameters.



**XL Crimp 800**

**p.32**

Capacity: 3" 8SP - 4" 4SP- 6" Industrial  
Designed for heavy duty hydraulic  
assemblers  
High speed  
High power  
Accurate even on large diameters  
Ergonomics  
Optional « I-crimp » quality control system  
Step crimping capability with « I-crimp »



# H Crimp 80

PM 18

Field service & Mobile workshop

- Compact
- Light Weight
- Easy to Use
- Balanced design
- Dual stage pump

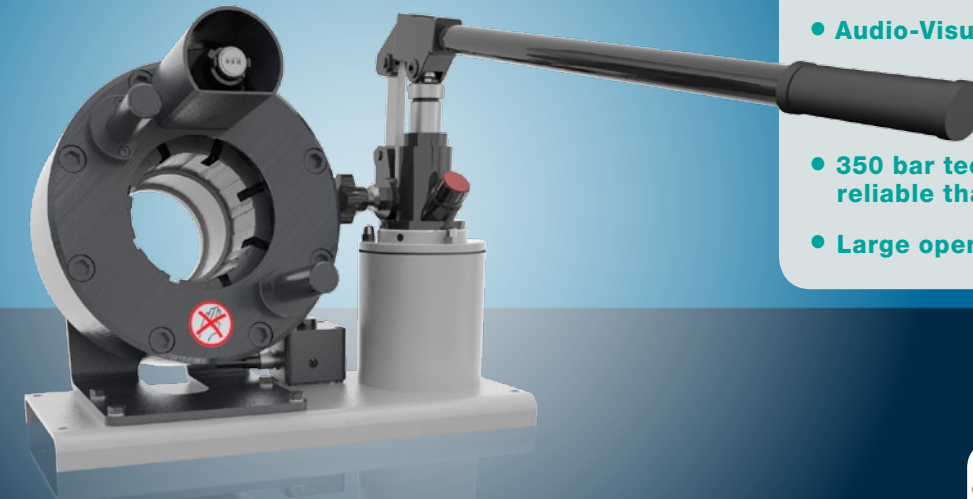


# H Crimp 137

PMH 28

Field service & Mobile workshop

- High capacity
- Narrow head
- Audio-Visual Signal
- 350 bar technology more robust & reliable than 700 bar
- Large opening



### Options



EG



DSP



Hydro-pneumatic pump



Die sets for brake & Air conditioning hoses



Marking dies

## Technical features

Capacity	1" 2WB
Crimp range	4 - 43 mm
Crimp force	80 t
Opening with dies	+20 mm
Complete opening	59 mm
Master-die length	56 mm
Dimensions	330 x 250 x 400 mm - 28 kg
Packing details	800 x 600 x 830 mm - 41 kg

## Dies selection

N°	Dies selection	Lenght
6	06-08	56 mm
8	08-10	56 mm
10	10-12	56 mm
12	12-15	56 mm
15*	15-18	56 mm
18*	18-21	56 mm
21*	21-24	56 mm
24*	24-27	56 mm
27*	27-30	56 mm
30*	30-39	56 mm
39	39-43	56 mm

\* Die sets included in the standard package.

## Technical features

Capacity	1" 1/4 4SP
Crimp range	4 - 70 mm
Crimp force	137 t
Opening with dies	+28 mm
Complete opening	100 mm
Master-die length	75 mm
Dimensions	480 x 250 x 340 mm - 55 kg
Packing details	800 x 600 x 830 mm - 75 kg

## Dies selection

N°	Dies selection	Lenght	N°	Dies selection	Lenght
4	04-06	56 mm	33*	33-36	70 mm
6	06-08	56 mm	36	36-39	70 mm
8	08-10	56 mm	39*	39-42	70 mm
10	10-12	56 mm	42	42-45	70 mm
12	12-15	56 mm	45*	45-48	70 mm
15*	15-18	56 mm	48	48-51	70 mm
18*	18-21	56 mm	51	51-54	75 mm
21*	21-24	56 mm	54	54-57	75 mm
24	24-27	56 mm	57	57-60	75 mm
27*	27-30	56 mm	60	60-66	75 mm
30	30-33	56 mm	66	66-70	75 mm

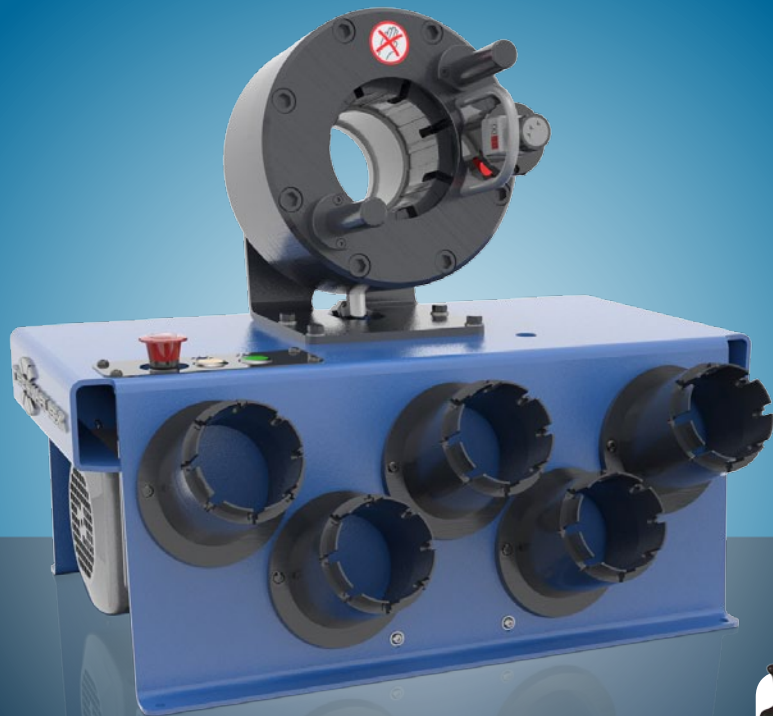
\* Die sets included in the standard package.



# S Crimp 137

SE 28

Starter workshop



- Ergonomic micrometer
- Compact head
- Die storage included
- Multiple Voltage Options
- Accurate
- Easy to move
- Cylinder protection
- Easy die set up

Standard

Options



EG



DSP



DST



Electrical footswitch\*\*



Die sets for brake & Air conditioning hoses



Marking dies



Ergonomic micrometer

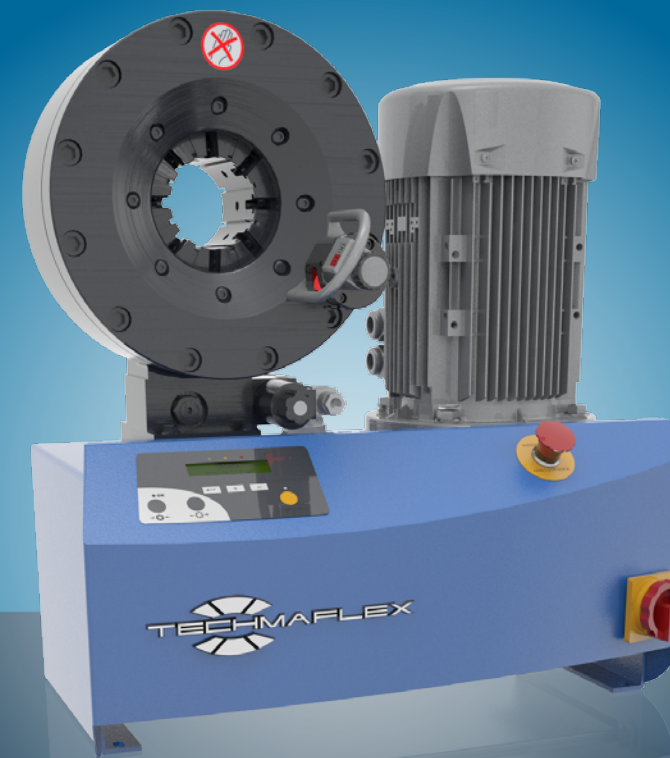


Front die storage

# S Crimp 240

PE 38

Professional workshop



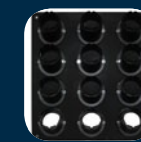
- Ergonomic micrometer
- Radial Die Movement / Easy set up
- High crimping force
- Electronic control including counters & semi-automatic opening
- Cylinder protection
- Easy front access for elbow fittings
- Energy savings
- Automatic Maintenance Alerts

Standard

Options



EG



DSP



DST



Ergonomic micrometer



Smart control panel



Electrical footswitch



Mechanical backstop



Die sets for brake & Air conditioning hoses



Marking dies

## Technical features

Capacity	1" 1/4 4SP
Crimp range	4 - 70 mm
Crimp force	137 t
Opening with dies	+28 mm
Complete opening	100 mm
Master-die length	75 mm
Motor	2,2 kW
Dimensions	600 x 400 x 490 mm 85 kg with oil
Packing details	800 x 600 x 830 mm - 130 kg
Voltages available	400V 3PH 230V 3PH/1PH 110V 1PH

## Dies selection

N°	Dies selection	Lenght	N°	Dies selection	Lenght
4	04-06	56 mm	33*	33-36	70 mm
6	06-08	56 mm	36	36-39	70 mm
8	08-10	56 mm	39*	39-42	70 mm
10	10-12	56 mm	42	42-45	70 mm
12	12-15	56 mm	45*	45-48	70 mm
15*	15-18	56 mm	48*	48-51	70 mm
18*	18-21	56 mm	51	51-54	75 mm
21*	21-24	56 mm	54	54-57	75 mm
24*	24-27	56 mm	57	57-60	75 mm
27*	27-30	56 mm	60	60-66	75 mm
30	30-33	56 mm	66	66-70	75 mm

\* Die sets included in the standard package.  
\*\* to be ordered with the machine

## Technical features

Capacity	2" 4SP
Crimp range	4 - 76 mm
Crimp force	240 t
Opening with dies	+38 mm
Complete opening	118 mm
Master-die length	100 mm
Motor	4 kW
Dimensions	600 x 390 x 630 mm 180 kg with oil
Packing details	1170 x 770 x 1100 mm - 234 kg
Voltages available	400V 3PH 230V 3PH/1PH

## Dies selection

N°	Dies selection	Lenght	N°	Dies selection	Lenght
4	04-06	56 mm	36	36-39	90 mm
6	06-08	56 mm	39*	39-42	90 mm
8	08-10	56 mm	42	42-45	90 mm
10	10-12	56 mm	45*	45-48	100 mm
12	12-15	56 mm	48	48-51	100 mm
15*	15-18	56 mm	51*	51-54	100 mm
18*	18-21	56 mm	54	54-57	100 mm
21*	21-24	56 mm	57*	57-60	100 mm
24*	24-27	70 mm	60	60-66	100 mm
27*	27-30	90 mm	66*	66-70	100 mm
30	30-33	90 mm	70	70-76	100 mm
33*	33-36	90 mm			

\* Die sets included in the standard package.



# S Crimp 350/350L

PE 58 Pro / PE 58 Eco

Full service workshop



- High power & large opening in a very compact design
- Ergonomic micrometer / Easy set up
- Radial Die Movement
- Electronic control including counters & semi-automatic opening
- Cylinder protection
- Groove for 90° long drop
- Die sets available for Industrial hose
- Energy savings
- Automatic Maintenance Alerts

## Standard

## Options



Ergonomic micrometer

Smart control panel

Marking dies

EG

DST

Electrical footswitch

DSP

Mechanical backstop

Die sets for brake & Air conditioning hoses

## Technical features

Capacity	2" 6SP - 4" Industrial
Crimp range	4 - 130 mm
Crimp force	350 t
Opening with dies	+54 mm
Complete opening	180 mm
Master-die length	115 mm
Motor	5,5 kW (4 kW*)
Dimensions*	730 x 483 x 812 mm 260 kg with oil
Packing details*	1170 x 760 x 1100 mm 320 kg
Dimensions	600 x 400 x 750 mm 240 kg with oil
Packing details	1170 x 760 x 1100 mm 300 kg
Voltages available	400V 3PH - 230V 3PH/1PH

\* S Crimp 350L only

## Dies selection

N°	Dies selection	Length	N°	Dies selection	Length
4	04-06	56 mm	51*	51-54	110 mm
6	06-08	56 mm	54	54-57	110 mm
8	08-10	56 mm	57*	57-60	110 mm
10	10-12	56 mm	60	60-66	110 mm
12	12-15	56 mm	66*	66-70	110 mm
15*	15-18	56 mm	70	70-73	110 mm
18*	18-21	56 mm	73*	73-76	125 mm
21*	21-24	56 mm	76	76-80	125 mm
24*	24-27	70 mm	80	80-86	125 mm
27*	27-30	90 mm	86	86-90	125 mm
30	30-33	90 mm	90	90-95	125 mm
33*	33-36	90 mm	95	95-99	125 mm
36	36-39	90 mm	99	99-112	125 mm
39*	39-42	90 mm	112	112-117	125 mm
42	42-45	90 mm	117	117-122	125 mm
45*	45-48	100 mm	122	122-130	125 mm
48	48-51	100 mm			

\* Die sets included in the standard package.

## Options



EG-Plastic



SRC-Aluminium



DST



DSP

## EG / SRC / DSP / DST

Our patented Ergonomic Gun is available on all Electric Crimpers. It's ease of use makes it an essential tool for increased productivity, comfort and safety. The gun allows the user to change the entire die set at one time and store them on the crimper table (DST) or on the die panel (DSP). Dies are changed in a static position with the head closed to avoid pin damage and broken parts. The EG is available in Aluminum as well (SRC).

## Smart control panel

The SCP is an electronic device to manage the hose crimping operation in an easy, convenient and smart way. The SCP becomes a great tool for hose assemblies in series thanks to the daily counter and the adjustment of the opening. Smart maintenance lights will support you to keep your machine in a perfect state. The Stop/ Start system is a great asset to avoid unnecessary waste of energy and to increase machine life.



## ISD

The ISD is the most userfriendly touch screen control available on the market. The ISD allows for automatic die selection, semi-automatic opening and preventive maintenance alerts. Via USB, you can upload and download crimping charts and machine data. Once the crimping chart is created, a scrolling list makes hose and fitting selection easy. It is also possible to create a personalized crimping chart directly on the machine or through a PC.

## I-crimp

The I-crimp system is the most developed and reliable safety system on the market. By controlling the pressure needed on your hose assembly, you will avoid quality problems and human errors. Indeed, the crimping is validated by pressure to avoid uncrimped ends or wrong selection of ferrule or fitting. Thanks to this system, you can also manage crimping sequences which is quite usefull for assembling hoses composed of straight and elbow fittings, it is also a great asset for industrial hose assemblies.

## CME



The electric footswitch enables the operator to handle to hose assembly with both hands in safe operation thanks to the emergency stop. In other words, it offers more comfort in your daily work.

## Special dies

Brake  
A/C  
Marking dies  
Small diameters



## BAM

The mechanical backstop is an excellent tool for a fast and ideal positioning of the fitting.





# V Crimp 137

PE 28 12V  
Field service & mobile workshop

# V Crimp 240 / 350

PE 38 12V / PE 58 12V  
Field service & mobile workshop

- Light Weight
- Precise
- Compact
- Quick
- Capable of Crimping 90° Elbows
- Well balanced
- Robust
- Cylinder protection
- Remote Head mounting available.

- Ergonomic micrometer
- Quick
- Die radial movement  
Radial Die Movement
- 2" 4SP / 2" 6SP capacity
- Cylinder protection
- Resistant
- Remote Head mounting available.

### Options



DSP



EG



Battery & charger



Die sets for brake & Air conditioning hoses



Marking dies

### Standard



Ergonomic micrometer



Front die storage

### Options



EG



Battery & charger



DSP



Marking dies



Die sets for brake & Air conditioning hoses

## Technical features

Capacity	1" 1/4 4SP
Crimp range	4 - 70 mm
Crimp force	137 t
Opening with dies	+28 mm
Complete opening	100 mm
Master-die length	75 mm
Motor	2 kW
Dimensions	580 x 430 x 565 mm 90 kg with oil
Packing details	800 x 600 x 830 mm - 102 kg

## Dies selection

N° Dies selection	Lenght	N° Dies selection	Lenght
4	04-06 56 mm	33*	33-36 70 mm
6	06-08 56 mm	36	36-39 70 mm
8	08-10 56 mm	39*	39-42 70 mm
10	10-12 56 mm	42	42-45 70 mm
12	12-15 56 mm	45*	45-48 70 mm
15*	15-18 56 mm	48*	48-51 70 mm
18*	18-21 56 mm	51	51-54 75 mm
21*	21-24 56 mm	54	54-57 75 mm
24*	24-27 56 mm	57	57-60 75 mm
27*	27-30 56 mm	60	60-66 75 mm
30	30-33 56 mm	66	66-70 75 mm

\* Die sets included in the standard package.

## Technical features

Capacity	2" 4SP / 2" 6SP*
Crimp range	4 - 76 mm / 4 - 130 mm*
Crimp force	240 t / 350 t*
Opening with dies	+38 mm / +54 mm*
Complete opening	118 mm / 180 mm*
Master-die length	100 mm / 115 mm*
Motor	2 kW
Dimensions	580 x 430 x 625 mm 130 kg with oil
Packing details	800 x 600 x 830 mm - 180 kg

\* V Crimp 350 only

## Dies selection

N° Dies selection	Lenght	N° Dies selection	Lenght
4	04-06 56 mm	36	36-39 90 mm
6	06-08 56 mm	39*	39-42 90 mm
8	08-10 56 mm	42	42-45 90 mm
10	10-12 56 mm	45*	45-48 100 mm
12	12-15 56 mm	48	48-51 100 mm
15*	15-18 56 mm	51*	51-54 100 mm
18*	18-21 56 mm	54	54-57 100 mm
21*	21-24 56 mm	57*	57-60 100 mm
24*	24-27 70 mm	60	60-66 100 mm
27*	27-30 90 mm	66*	66-70 100 mm
30	30-33 90 mm	70	70-76 100 mm
33*	33-36 90 mm		

\* Die sets included in the standard package.



# N Crimp 70/N Crimp 80

PEP108 / PEP 158

Expert Service Line



- Easy to use
- Accurate
- Robust die holder system
- Automatic opening
- High speed
- Large opening
- Large capacity
- Available with 6 master-dies

Standard



Ergonomic micrometer

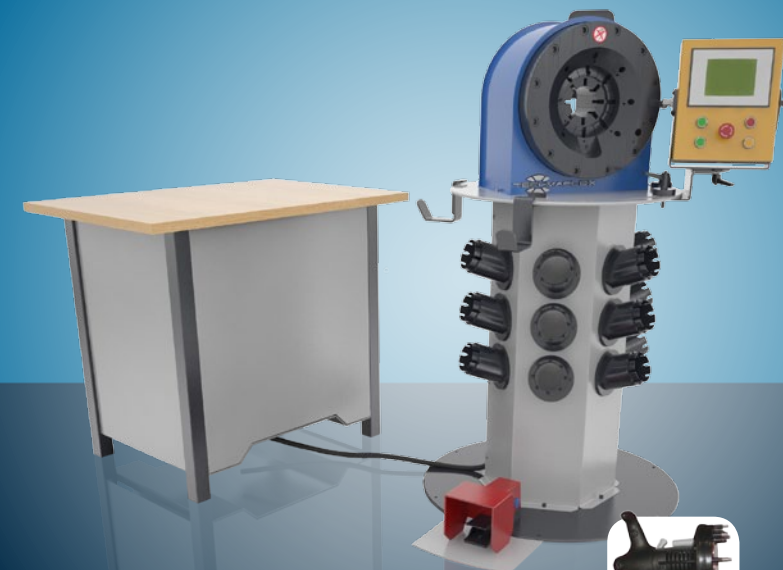
Options



Electrical footswitch



Automatic central greasing system



Standard



ISD



Electrical footswitch



Mirror



EG

Options



DSP



Mechanical backstop



I-crimp system



Hose hook



Die sets for brake & Air conditioning hoses



Marking dies

# P Crimp 240

PES 58

Expert Service Line

- First OEM machine up to 1 1/4"
- Ergonomics
- Fast
- Low maintenance
- Easy die set up with ergonomic gun

## Technical features

Capacity	1" 1/2 / 3"
Crimp range	4-60 mm / 4-110 mm*
Crimp force	70 t / 80 t*
Opening with dies	+ 28 mm
Complete opening	108 mm / 156 mm*
Master-die length	100 mm / 125 mm*
Motor	3 kW / 4 kW*
Dimensions	724 x 950 x 1170 mm - 450 kg
Packing details	1120 x 1020 x 1770 mm - 490 kg
Voltages available	400V 3PH - 230V 3PH

\* N Crimp 80 only

## Dies selection

N°	Dies selection
12	12-14
14	14-16
16	16-19
19	19-22
22	22-26
26	26-30
30	30-34
34	34-45
45	45-51
*51	51-57
*57	57-63
*63	63-69
*69	69-73
*73	73-76

## Technical features

Capacity	1"1/4 4SP
Crimp range	4 - 70 mm
Crimp force	240 t
Opening with dies	+54 mm
Complete opening	180 mm
Master-die length	115 mm
Motor	5,5 kW
Dimensions	Machine: 850 x 850 x 1300 mm 250 kg
	Power pack: 600 x 450 x 700 mm 200 kg with oil
Voltages available	400V 3PH - 230V 3PH

## Dies selection

N°	Dies selection	Lenght	N°	Dies selection	Lenght
4	04-06	56 mm	36	36-39	90 mm
6	06-08	56 mm	39*	39-42	90 mm
8	08-10	56 mm	42	42-45	90 mm
10	10-12	56 mm	45*	45-48	100 mm
12*	12-15	56 mm	48*	48-51	100 mm
15*	15-18	56 mm	51	51-54	110 mm
18*	18-21	56 mm	54	54-57	110 mm
21*	21-24	56 mm	57	57-60	110 mm
24*	24-27	70 mm	60	60-66	110 mm
27*	27-30	90 mm	66	66-70	110 mm
30	30-33	90 mm	70	70-73	110 mm
33*	33-36	90 mm			

\* Die sets included in the standard package.



# P Crimp 320

PES 100

Expert Service Line



- Robust
- High crimping force
- Large opening
- Accurate
- High repetitivity
- Easy die set up with ergonomic gun
- Optional «I-Crimp» Quality Control System

# P Crimp 480

PES 125

Expert Service Line



- High crimping force
- Large opening
- Large dies available for industrial hoses
- Easy die set up with ergonomic gun
- Long master-dies
- Robust
- Optional «I-Crimp» Quality Control System

### Standard



ISD



Die storage



EG



Mirror



Electrical footswitch

### Options



DSP



I-crimp system



Mechanical backstop



Die sets for brake & Air conditioning hoses



Marking dies

### Standard



Die storage



EG



ISD



Electrical footswitch



Mirror

### Options



Mechanical backstop



I-crimp system



DSP



Die sets for brake & Air conditioning hoses



Marking dies

## Technical features

Capacity	2" 6SP
Crimp range	4 - 130 mm
Crimp force	320t
Opening with dies	+80 mm
Complete opening	207 mm
Master-die length	100 mm
Motor	5,5 kW
Dimensions	1300 x 900 x 1700 mm 2000 kg with oil
Packing details	1400 x 1100 x 1960 mm 2 230 kg
Voltages available	400V 3PH - 230V 3PH

## Dies selection

N° Dies selection	Lenght	N° Dies selection	Lenght
4	04-06 56 mm	51*	51-54 100 mm
6	06-08 56 mm	54	54-57 100 mm
8	08-10 56 mm	57*	57-60 100 mm
10	10-12 56 mm	60	60-66 100 mm
12	12-15 90 mm	66*	66-70 100 mm
15*	15-18 90 mm	70	70-73 100 mm
18*	18-21 90 mm	73	73-76 100 mm
21*	21-24 90 mm	76	76-80 100 mm
24*	24-27 90 mm	80	80-86 100 mm
27*	27-30 90 mm	86	86-90 100 mm
30	30-33 90 mm	90	90-95 100 mm
33*	33-36 90 mm	95	95-99 100 mm
36	36-39 90 mm	99	99-112 100 mm
39*	39-42 90 mm	112	112-117 100 mm
42	42-45 90 mm	117	117-122 100 mm
45*	45-48 95 mm	122	122-130 100 mm
48	48-51 100 mm		

\* Die sets included in the standard package.

## Technical features

Capacity	3" 6SP
Crimp range	4 - 160 mm
Crimp force	480 t
Opening with dies	+85 mm
Complete opening	212 mm
Master-die length	125 mm
Motor	5,5 kW
Dimensions	1300 x 900 x 1700 mm 2200 kg with oil
Packing details	1400 x 1100 x 1960 mm 2 230 kg
Voltages available	400V 3PH - 230V 3PH

## Dies selection

N° Dies selection	Lenght	N° Dies selection	Lenght
4	04-06 56 mm	51*	51-54 110 mm
6	06-08 56 mm	54	54-57 110 mm
8	08-10 56 mm	57*	57-60 110 mm
10	10-12 56 mm	60	60-66 110 mm
12	12-15 90 mm	66*	66-70 110 mm
15*	15-18 90 mm	70	70-73 100 mm
18*	18-21 90 mm	73*	73-76 125 mm
21*	21-24 90 mm	76	76-80 125 mm
24*	24-27 90 mm	80	80-86 125 mm
27*	27-30 90 mm	86	86-90 125 mm
30	30-33 90 mm	90	90-95 125 mm
33*	33-36 90 mm	95	95-99 125 mm
36	36-39 90 mm	99	99-112 125 mm
39*	39-42 90 mm	112	112-117 125 mm
42	42-45 90 mm	117	117-122 125 mm
45*	45-48 100 mm	122	122-130 125 mm
48	48-51 100 mm		

\* Die sets included in the standard package.







# XL Crimp 800

PES 800  
XXL Workshop



- Designed for heavy duty hydraulic assemblers
- High speed
- High power
- Accurate even on large diameters
- Ergonomics
- Optional «I-Crimp» Quality Control System
- Step Crimping capability with «I-Crimp»



### Standard



ISD



Electrical footswitch



Hose support

### Options



I-crimp system



EG



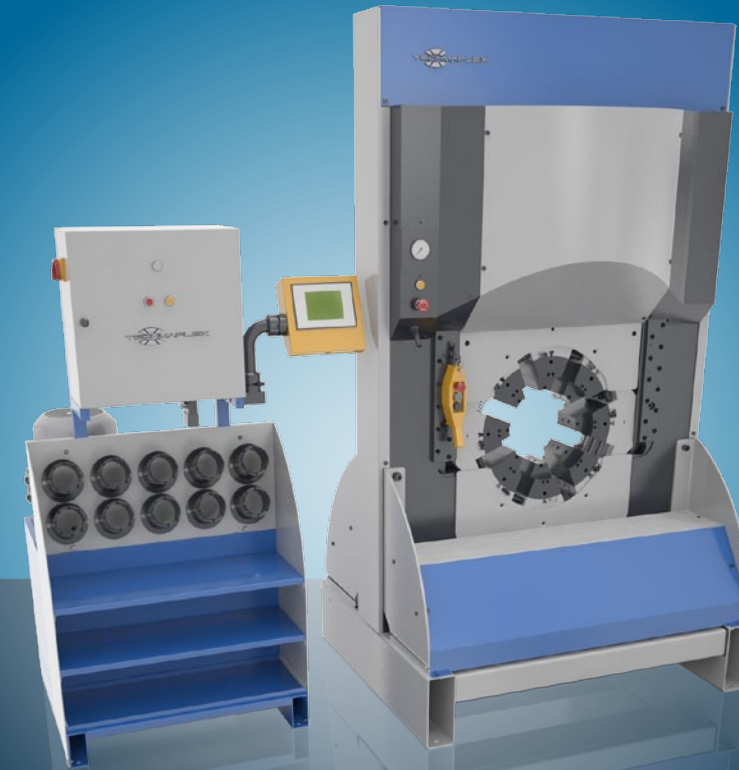
DSP

# XL Crimp 550

PES 500  
XXL Workshop



- Very large opening
- Fixed bottom die
- Long dies available
- High crimping force
- Symmetric machine
- Low working height
- Ergonomic
- I-crimp system in option - Optional «I-Crimp» Quality Control System
- Step Crimping capability with «I-Crimp»



### Standard



ISD



Electrical footswitch

### Options

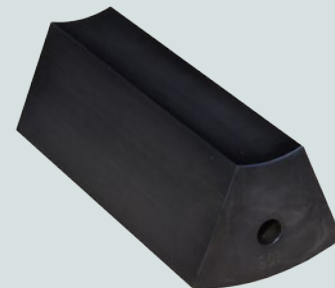


I-crimp system

## Technical features

Capacity..... 3" 8SP - 4" 4SP- 6" Industrial  
 Crimp range..... 4-230 mm  
 Crimp force..... 800 t  
 Opening with dies ..... +100 mm  
 Complete opening ..... 350 mm  
 Master-die length ..... 180 mm  
 Motor ..... 7,5 kW  
 Dimensions ..... 1400 X 1400 X 2060 mm  
 4400 kg  
 Voltages available..... 400V 3PH - 230V 3PH

## Dies sizes available upon request



## Technical features

Capacity..... 12" Industrial  
 Max. crimping diameter .. 390 mm  
 Crimp force..... 550 t  
 Opening with dies ..... +130 mm  
 Complete opening ..... 490 mm  
 Master-die length ..... 200 mm  
 Motor ..... 5,5 kW  
 Dimensions ..... Machine: 1300 x 1050 x 2230 mm  
 4000 kg  
 Centrale: 800 x 790 x 1650 mm  
 500 kg  
 Voltages available..... 400V 3PH - 230V 3PH

## Dies sizes available upon request



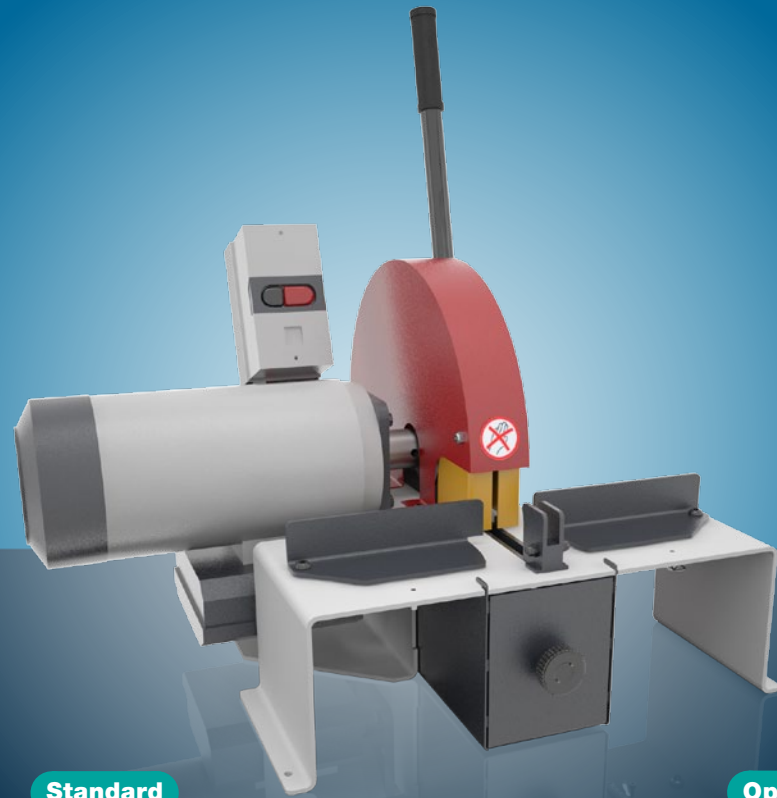


# S Cut 22 / V Cut 22

FC 32

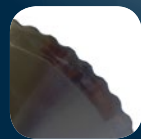
Starter workshop

- Smooth bending system
- 90° cut
- Clean cut
- Scalloped blade
- Dust collector included
- Multiple Voltage Options



Standard

Options



Scalloped blade



Dust collector



Battery & charger\*



Decoiler



Cutting rail

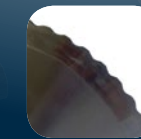


Standard

Options



2 dust collectors



Scalloped blade



Cutting rail



Decoiler

# S Duo 30

TE 50 Cut & Skive

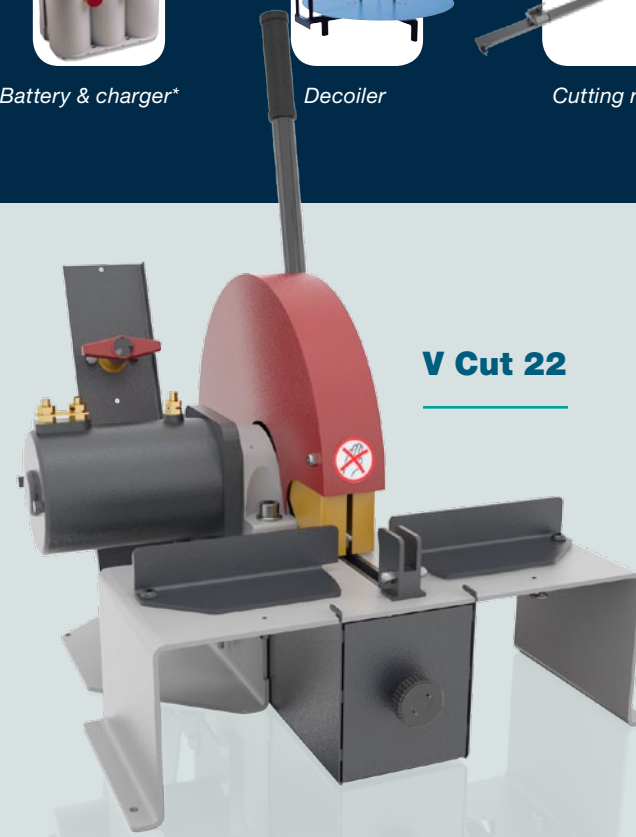
Starter & professional workshop

- 2 in 1
- Easy to use
- Compact
- Economic
- Internal & external skiving with knives
- Electric Brake Motor for Safety
- Dust collectors included
- 2-way rotation
- Scalloped blade

## Technical features

Capacity	1"1/4 4SP
Motor	2,2 kW
Motor	2 kW*
Cutting disc	Scalloped blade Ø 254 mm
Max. hose OD	50 mm
Rotation speed	3000 rpm
Dimensions	630 x 675 x 650 mm - 42 kg
Packing details	800 x 600 x 830 mm - 55 kg
Dimensions*	488 x 630 x 650 mm - 38 kg
Packing details*	800 x 600 x 830 mm - 51 kg
Voltages available	400V 3PH - 230V 3PH/1PH - 12V

\* V Cut 22 only



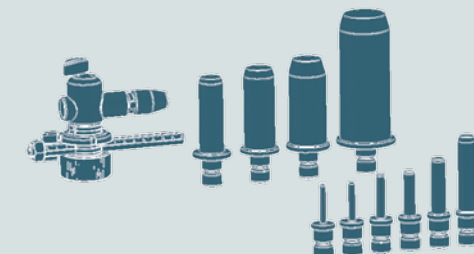
V Cut 22

## Technical features

Capacity	2" 4SP
Motor	3 kW
Scalloped blade	Ø 300 mm
Max. hose OD	85 mm
Rotation speed	3000 rpm
Tool selection	External: ESE Internal: IS
Dimensions	835 x 545 x 640 mm - 115 kg
Packing details	800 x 600 x 830 mm - 130 kg
Voltages available	400V 3PH - 230V 3PH



Kit IS



Kit ESE

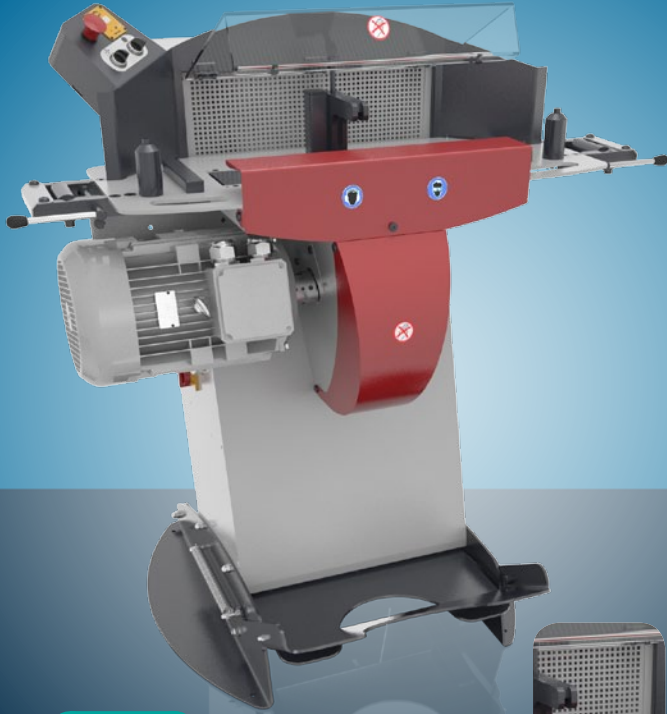


# S Cut 55/ S Cut 30

TP 60 / TP 40

Full Service Workshop

- Smoke free
- Includes Digital Counter
- Automatic Maintenance Alerts
- Feeding guides
- Ergonomic design
- Comfortable
- Large, Double Pedal
- Pneumatic bending system (option)
- Scalloped blade
- Mobile



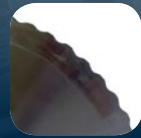
Standard



Smoke suction



Control panel



Scalloped blade



Feeding guides

Options

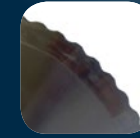


Cutting rail



Decoiler

Standard



Scalloped blade



Production counters

Options



Cutting rail



Decoiler

# P Cut 90

TS 76

Expert Service Line

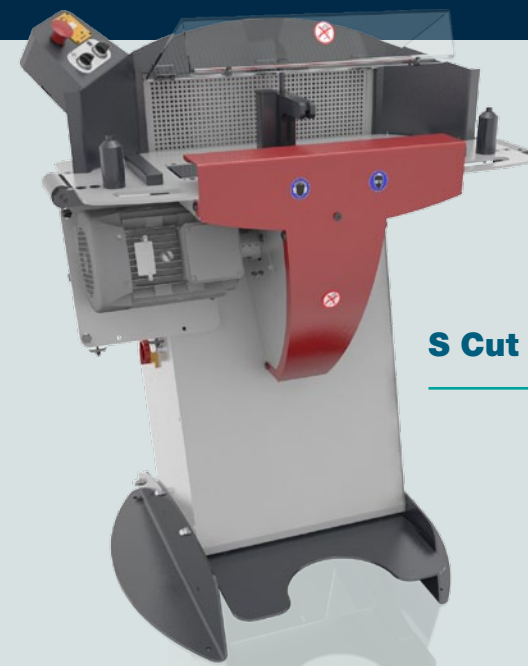
- Very powerful
- Heavy Duty for Difficult Cuts
- Hydraulic bending
- Brake motor
- Large blade
- Electronic soft start



## Technical features

Capacity	2" 6SP / 2" 4SP
Motor	5,5 kW/ 3 kW
Scalloped blade	Ø 400 mm/ Ø 300 mm
Max. hose OD	80 mm
Rotation speed	3000 rpm
Dimensions	1240 x 975 x 1270 mm - 240 kg
Packing details	1120 x 1020 x 1770 mm - 300 kg
Voltages available	400V 3PH - 230V 3PH

\* Available without smoke suction



S Cut 30

## Technical features

Capacity	3" 6SP
Motor	9kW
Scalloped blade	Ø 520 mm
Max. hose OD	125 mm
Rotation speed	3000 rpm
Dimensions	982 x 1041 x 1310 mm - 350 kg
Packing details	1120 x 1020 x 1770 mm - 410 kg
Voltages available	400V 3PH - 230V 3PH

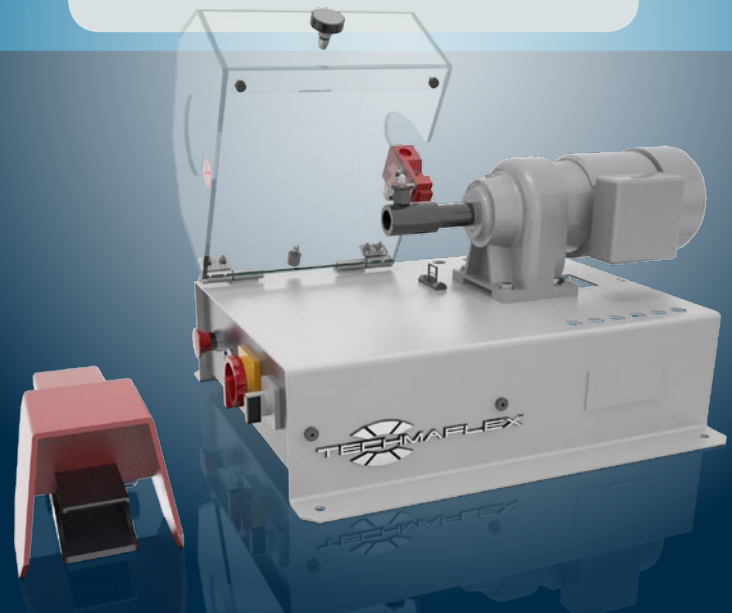


# S Skive 100

DE 50  
Professional workshop



- Plug'n skive system
- Compact & stable
- Safety switch on the cover
- Good visibility
- Tool storage included
- Foot pedal drive with emergency stop
- 2-way rotation

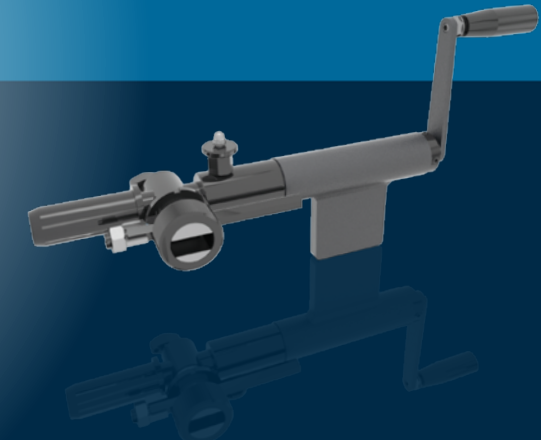


# H Skive

HST 50  
Field service & mobile workshop



- Economic
- Simple
- Compact
- Robust
- Plug'n skive system

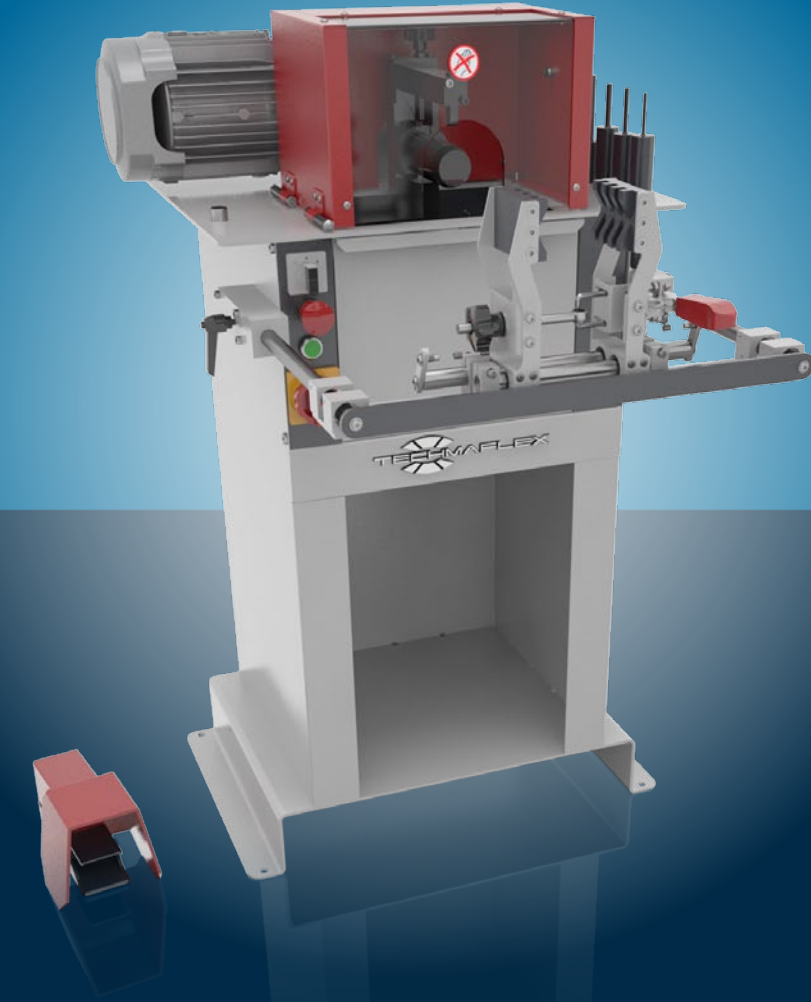


# P Skive 205

DC 76 +  
Expert Service Line



- Plug'n skive system
- Large dust collector
- Robust & easy adjustable knife - Adjustable Knife for Quick and Easy changeover
- High capacity
- Fast
- 2-way rotation



### Options



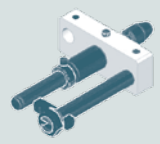
Speed regulator



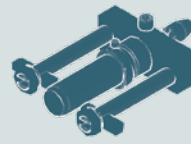
Hose clamping system

### Technical features

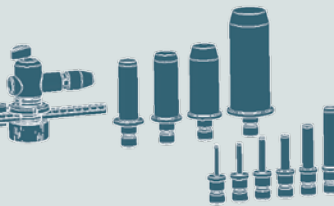
Capacity ..... 2"  
 Motor ..... 0,25 kW  
 Rotation Speed ..... 100 rpm  
 Tool selection ..... External: ESE or ESP  
 Internal: IS  
 Dimensions ..... 500 x 600 x 360 mm - 36 kg  
 Packing details ..... 800 x 600 x 830 mm - 55 kg  
 Voltages available ..... 400V 3PH - 230V 3PH



Kit ESP 1



Kit ESP 2



Kit ESE



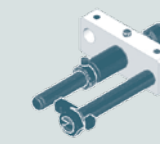
Kit IS

### Technical features

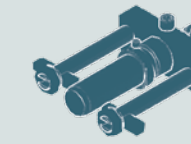
Capacity ..... 2"  
 Tool selection ..... External: ESE  
 Internal: IS  
 Dimensions ..... 413 X 52 X 224 mm - 3 kg

### Technical features

Capacity ..... 3"  
 Motor ..... 0,75 kW  
 Rotation Speed ..... 205 rpm  
 Tool selection ..... External: ESA or ESP  
 Internal: IS  
 Dimensions ..... 550 x 675 x 1140 mm - 100 kg  
 Packing details ..... 600 x 800 x 1350 mm - 160 kg  
 Voltages available ..... 400V 3PH - 230V 3PH



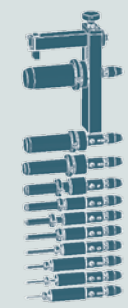
Kit ESP 1



Kit ESP 2



Kit IS

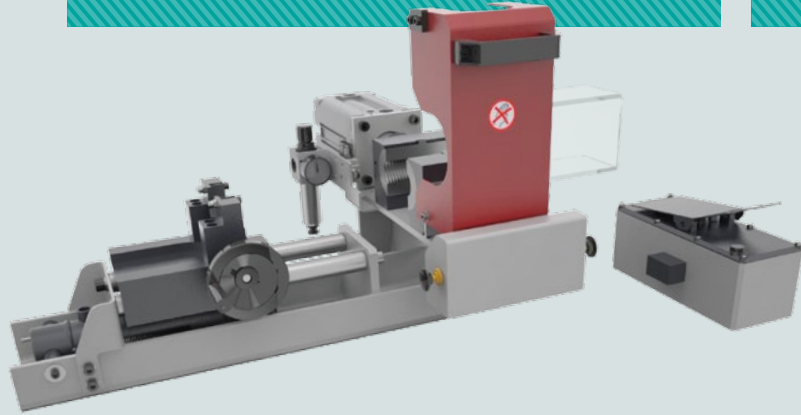


Kit ESA



# COMPLEMENTARY PRODUCTS

## S Push 1500 EHN 50



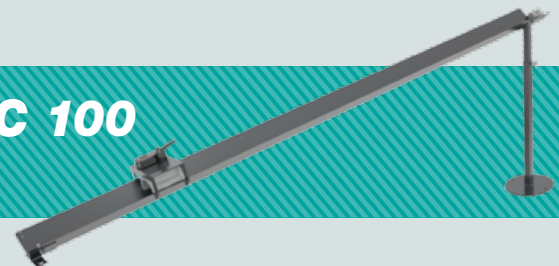
### Indicative capacity

All hydraulic hoses from 3/4" up to 2" Interlock  
Suitable for 45° and 90° elbow fittings

### Performance / Specs :

Pushing force ..... 1,500 daN  
Pneumatic Clamping force .... 550 daN  
Min - Max Hose OD ..... 28 - 73 mm  
Connection to compressed air network (7 bar / 100psi)  
Dimensions ..... 750 X 660 X 300 mm - 70 kg

## RC 100



### Technical features

The cutting rail (available in length 2 m, 3 m or 5 m) can be adapted to all the Techmaflex cutting machines

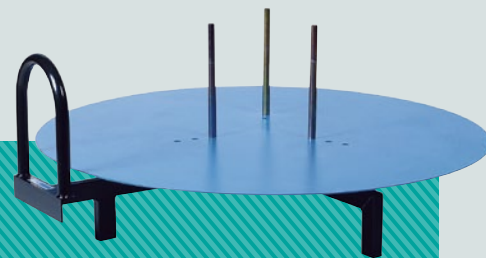
## HRD 07



### Technical features

Hoses can be stored on the hose dispenser  
Number max of coils ..... 7  
Maximum weight/ coil ..... 80 kg  
Minimum internal Ø ..... 300 mm  
Maximum external Ø ..... 850 mm  
Maximum height ..... 200 mm  
Dimensions ..... 1180 x 1180 x 2115 mm - 100 kg  
Packing details ..... 1200 x 1200 x 720 mm - 135 kg

## DV 32



### Technical features

Hose decoiler

## S Clean 50 CK 50



### Technical features

Number of Nozzles ..... 10 to suit hose ID  
Compressed Air ..... 7 bar  
Minimum internal diameter of Hose ..... 6 mm  
Maximum internal diameter ..... 51 mm  
Includes 575 pellets & projectile catcher

## S Mark 50 MMJT-50



### Technical features

Indicative capacity ..... 2"  
Standard stamp holder ..... 2 x 14 stamps  
Size of the stamps ..... 6 x 3 mm  
Height of the writing ..... 2,5 mm  
Max O.D of ferrule ..... 150 mm  
Dimensions ..... 390 x 360 x 520 mm - 34 kg  
Packing details ..... 800 x 600 x 830 mm - 50 kg  
Includes Stamp box of 100 stamps + 20 blanks

## S Test 2500 BE 2500



### Technical features

Indicative capacity ..... 3/16" up to 2"  
Maximum pressure ..... 2500 bar  
Hose connection ..... 5 outlets ports of 3/8" Fem. Gas (BSPP)  
Minimum compressed air input ..... 7 bar with min air flow 1000 l/min (dry air)  
Standard fluid used for tests ..... Filtered water, minimum inlet pressure 3 bar  
Minimum recommended test pressure ..... 80 bar  
Dimensions ..... 2500 x 800 x 1050 mm - 175 kg  
Packing details ..... 2360 x 1130 x 1330 mm - 330 kg

### Options



Computer & printer for test reports

Internal light

Second pump for low pressure

Test with emulsion in filtered closed circuit







**Other documentation available,  
go on Techmaflex website to download  
other languages available.**

Contact details:

**TECHMAFLEX HEADQUARTERS**

26, avenue de la Vertonne  
44120 VERTOU - FRANCE

Tel: +33 (0)2 40 03 05 01  
Fax: +33 (0)2 40 03 00 17  
E-mail: [info@techmaflex.com](mailto:info@techmaflex.com)

**After sales Department**

Tel: +33 (0)2 40 03 00 09  
mail: [service@techmaflex.com](mailto:service@techmaflex.com)

---

**TECHMAFLEX NORTH AMERICA**

410 Keystone Dr, Suite #420  
WARRENDALE, PA 15086- USA

Tel: +001 (724) 778 3380  
E-mail : [info@techmaflex.com](mailto:info@techmaflex.com)

---

**TECHMAFLEX ASIA**

No 3 Gul Circle  
SINGAPORE 629632- SINGAPORE

Tel: +65 68 61 1091  
Fax: +65 6861 1831  
E-mail : [info@techmaflex.com](mailto:info@techmaflex.com)

---

**TECHMAFLEX RUSSIA**

56, bld. 44, office 1012,  
111123 MOSCOW- RUSSIA

Tel: +7 (495) 368-40-94  
Fax: +7 (495) 748-89-70  
E-mail : [info@techmaflex.com](mailto:info@techmaflex.com)

---

[www.techmaflex.com](http://www.techmaflex.com)

Even though great care was taken in realising this catalogue,  
typographical errors may remain and won't engage our  
responsibility. Pictures are non-contractual.